

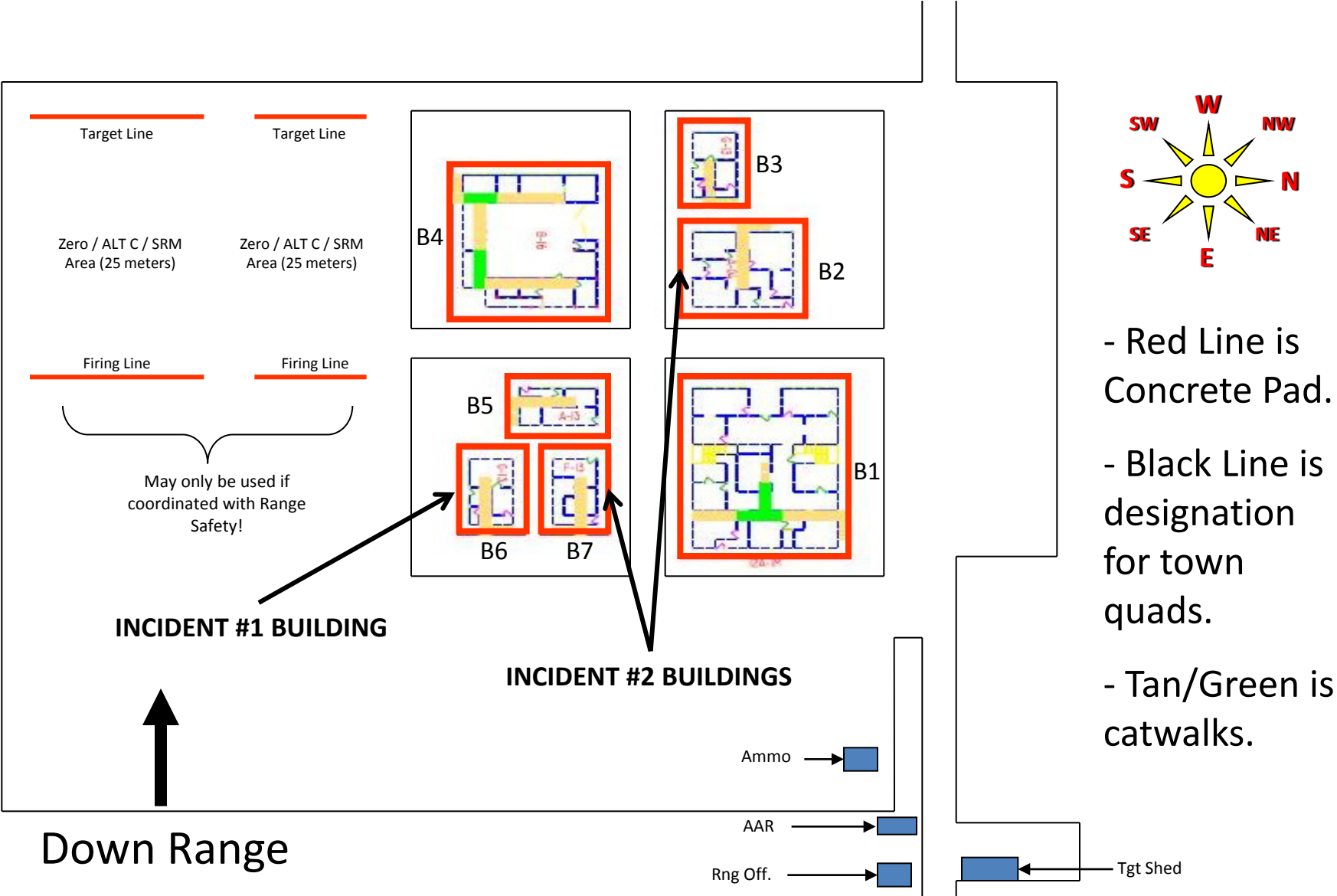
LIVE FIRE SHOOT HOUSE  
NEGLIGENT DISCHARGES AAR

***4 SOLDIERS INJURED***

# *Agenda*

- Range Layout
- Sequence of Events
- Investigation Results
- Contributing Factors
- Corrective Actions

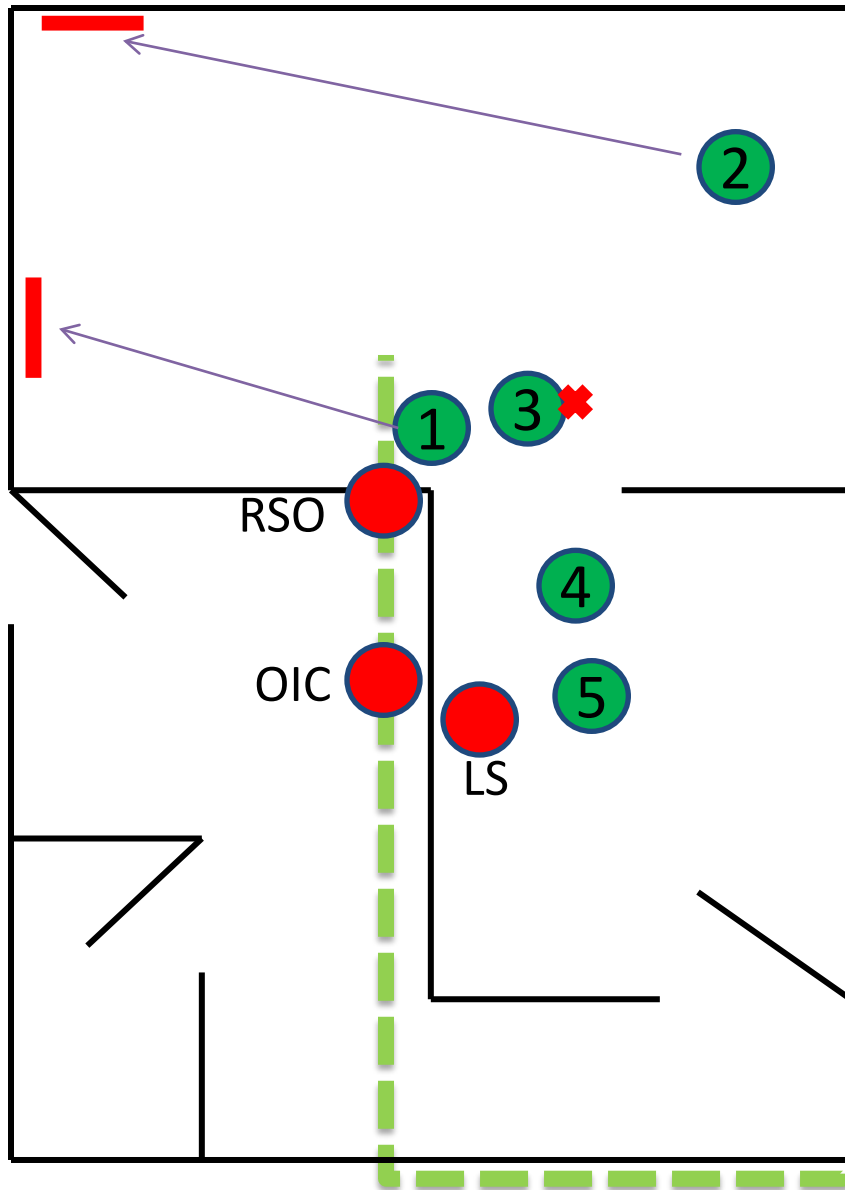
# Range Layout



- Red Line is Concrete Pad.
- Black Line is designation for town quads.
- Tan/Green is catwalks.

# *Sequence of Events*

## *Incident #1*



- Squad clears first 3 rooms cleanly
- #1, #2 men enter room 4, properly engage targets
- #3 man enters room, prepares to move to assigned point of domination while #4 man moves to door
- Lane Safety pulls hard on web gear of #4 man to slow pace
- Negligent discharge occurs (undetermined who had ND)
- #3 man announces that he has been hit, takes up position on floor
- Unit ceases execution, begins treatment and ground evacuation

# *Investigation Results*

## *Incident #1*

- Soldier was shot twice in the right shoulder area from behind
  - Soldier did not deploy with unit; requires further surgery to repair damages from wounds
- Inconclusive as to who had the negligent discharge
  - Unit did not cease fire / freeze weapon systems after incident
  - No round counts conducted prior to or after incident
- Strongly suspect #4 man fired as a result of surprise at being pulled away from the door by the lane safety

# Sequence of Events

## Incident #2

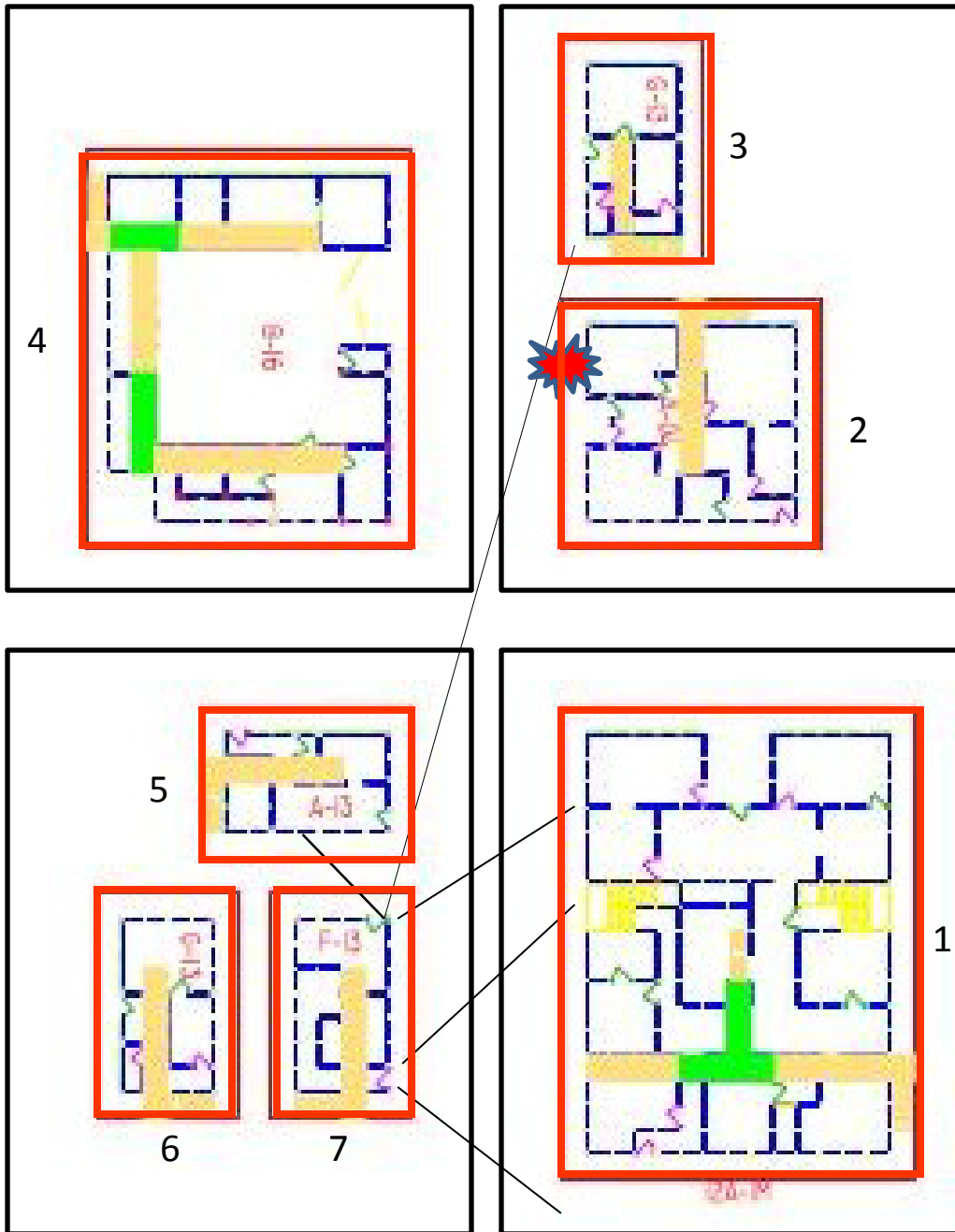
- 1<sup>ST</sup> PLT executes live fire clearance drills in building 7 while 2<sup>nd</sup> PLT allowed to conduct dry fire training in building #2

- While conducting retraining, M249 SAW gunner (under the supervision of a SSG) executes single man clearance drills in building #7.

- After correctly engaging one target, moves to the next room. While turning into the north room of building #7, SAW gunner has a negligent discharge sending several bullets through the NE wall and door

- 3 Soldiers from 2<sup>nd</sup> PLT located at building #2 are hit by bullet fragments and shrapnel

- Unit ceases live fire execution, begins treatment and ground evacuation of wounded



# *Investigation Results*

## *Incident #2*

- Three Soldiers wounded; 1 concussion (hit by rock fragment), 2 were penetrated by bullets (foot and hip)
  - Most likely ricochets
  - All three made a full recovery and are deployed with unit to the CENTCOM AOR
- Unit did not follow approved scenario
- Unit did not understand surface danger zone planning nor the inherent red zones (hot walls) within the shoot house facility
  - Training plan poorly synchronized to ensure safety

# *Contributing Factors*

- Company Commander deviated from approved training schedule/plan
  - Did not seek approval for changes
  - Allowed untrained Soldier to execute night live run without certifying all required gates
- Inexperience of shooter
  - New to unit
  - Not qualified on weapon or validated close quarters marksmanship tables prior to LFX
  - Did not participate in dry, blank, live progression
- Observer Controllers used catwalks to control exercise
  - OCs gave their NODs to Squad



# *Contributing Factors (continued)*

- Lack of senior leader supervision
  - Complex ARFORGEN schedule –RESET and Train periods executed simultaneously
- Overconfidence in experience level of junior and mid grade leaders
  - Many complex tasks occurring simultaneously with little supervision
  - Limited accountability of range OIC's and RSO's
- Complexity of shoot houses not accounted for. More than one type on installation; all with different nuances
  - Range certification on one site does not equal an adequate understanding of all others

# *Corrective Actions*

- Leader Training and Certification
  - 8 step training model strictly enforced
- BCT Live Fire SOP updated and published
  - BCT published a shoot house specific SOP
- Live fire urban operations pre-requisites for Soldiers
  - Qualified with weapon
  - Validate CQM tables within two weeks of shoot house execution
  - Crawl –walk –run methodology for all live fire exercises
- Battalion Commander validates all shoot house scenarios and targetry locations
  - Executed with all levels of unit leadership
  - Any change requires re-validation

## *Corrective Actions (continued)*

- Scenarios scrutinized to verify red zones are not within surface danger zones
- OCs and safeties move on ground, directly with squads at all times
  - Use integrated video systems on Range to AAR overall squad execution
  - Catwalks to be used only by VIPs only who will remain behind trail Soldier at all times
- PCCs/PCIs standardized and verified by chain of command prior to any runs