

2 BCT

**COMPANY, BATTERY, AND TROOP
COMMAND POST OPERATIONS SOP**

Strike Company, Battery, and Troop Command Post Operations SOP

TABLE OF CONTENTS

SOP PURPOSE AND OVERVIEW	Page 1
SECTION 1: COMPANY COMMAND POST OPERATIONS	Page 1
SECTION 2: COMPANY COMMAND POST MANNING	Page 4
SECTION 3: REQUIRED EQUIPMENT	Page 7
SECTION 4: PATROL DEPARTURE, TRACKING AND RE-ENTRY PROCEDURES	Page 11
SECTION 5: COMPANY FUSION, TARGETING, AND PLANNING CELL	Page 13
SECTION 6: COMPANY INTELLIGENCE CELL OPERATIONS	Page 15
SECTION 7: COMPANY TAC CP OPERATIONS	Page 20

ANNEX

- A. COMPANY BATTLE TRACKING TOOLS
- B. COMPANY INTELLIGENCE TOOLS
- C. MISSION TRAINING PLAN FOR COMPANY CP OPERATIONS
- D. BCT TARGETING METHODOLOGY
- E. SAMPLE PRE-FORMATTED PATROL ORDER
- F. BCT INFORMANT PERSONAL INFORMATION SHEET FORMAT
- G. BCT INFORMANT CONTACT LOG FORMAT
- H. BCT MOSQUE MONITORING REPORT FORMAT
- I. BCT 9-LINE MEDEVAC FORMAT
- J. BCT UXO/IED REPORT FORMAT
- K. SAMPLE PATROL PASS FORMAT
- L. ARABIC NAME, TITLE, AND TRIBE TRANSLITERATION STANDARDS

REFERENCES

- A. FM 3-21.10: Infantry Rifle Company
- B. FM 3-90.1: Tank and Mechanized Infantry Company Team
- C. FM 17-97: Cavalry Troop
- D. FM 5-01.1: The Operations Process
- E. ARTEP 7-10-MTP
- F. ARTEP 17-97F30-MTP
- G. CALL Handbook 95-7: TOC Operations
- H. CALL Handbook 07-01: Tactical Intelligence
- I. CALL Handbook 06-17: Detainee Operations at the Point of Capture
- J. U.S. Marine Corps Company Intelligence Cell in Stability and Support Operations (SASO): Tactics, Techniques and Procedures (TTPs)
- K. 101st Airborne Division (Air Assault) Commanders' Guide to HUMINT Operations
- L. AWG Company Intelligence Cell Overview Briefing

SOP PURPOSE AND OVERVIEW:

1. The purpose of this SOP is to provide standards and guidance for maneuver company, battery, and troop CP operations throughout 2nd BCT (hereafter referred to only as “companies” for brevity)
2. This SOP dictates only the minimum required standards; commanders are highly encouraged to go beyond required standards and customize CP operations based on mission and personal preference
3. Exceptions to specific requirements within this SOP are authorized based on unique company missions (i.e. route clearance, QRF, security); companies with unique missions will modify their CP operations as required to best support their operations
4. New digital technology will be fielded throughout the deployment cycle that will streamline and modify specific Company CP procedures; companies must be prepared to update reporting, tracking, and analysis systems outlined in this SOP upon receipt of new technological solutions

SECTION 1: COMPANY COMMAND POST OPERATIONS

1. Mission of the Company CP:

“The CP assists the commander and his subordinate leaders in preparing for battle by providing a centralized point for information gathering and dissemination, coordination, time management, and tracking of unit status”

FM 3-90.1: Tank and Mechanized Infantry Company Team, Para. 3-253

2. The maneuver company will operate two command posts, a Main CP and a Company Trains Command Post (CTCP). The CP and CTCP can be collocated or separate based on mission requirements. The company will also operate a planning bay and rehearsal area.
 - a. Company CP:
 - (1) Company CP functions are identical to the Battalion TOC but on a smaller scale
 - (2) Responsible for company combat operations (see Paragraph 3 for CP functions)
 - b. Company Trains Command Post (CTCP):
 - (1) Based on unit mission and logistical support requirements, the CTCP may be a separate CP located on the BN FOB or a small entity co-located with the Company CP
 - (2) CTCP functions are identical to those of the Battalion ALOC/Combat Trains, but on a smaller scale:
 - Administrative Operations (awards, leave, interpreter management, etc.)
 - Logistical Operations (resupply, maintenance, property accountability, etc.)
 - (3) The CTCP is the alternate maneuver CP, if not co-located with the Company CP
 - (4) If the Company CP is located forward of the Battalion FOB and does not have SIPR connectivity, the CTCP will become the company’s SIPR access point; CTCP manning must be adjusted to meet SIPR reporting requirements (MIRC Chat, Blue 1 reports, etc.)
 - c. Planning Bay:
 - (1) Used for company, platoon, and squad planning and orders briefs
 - (2) Used for AARs and patrol debriefs
 - (3) Used for briefing ISF; no sensitive information is on display
 - d. Rehearsal Area
 - (1) Used for conducting pre-patrol rehearsals
 - (2) Used for conducting unit and ISF training
3. Functions of the Company CP: The Company CP functions like the battalion TOC but on a smaller scale; the six basic TOC functions identified in *CALL Newsletter 95-7: TOC Operations* provide a basis for Company CP operations:
 - Receive information

- Distribute information
 - Analyze information
 - Submit recommendations to the commander
 - Integrate resources
 - Synchronize resources
- a. Receive Information:
- (1) Receive messages, reports, and orders from subordinate units and higher headquarters
 - (2) Monitor tactical situation
 - (3) Maintain a journal of all significant activities and reports (RTO's log, SIGACT tracker)
 - (4) Maintain and update unit locations and activities
 - (5) Monitor enemy situation
 - (6) Maintain a status of critical classes of supplies
- b. Distribute information:
- (1) Submit reports to higher headquarters
 - (2) Serve as a communications relay between units
 - (3) Publish orders and instructions
 - (4) Process and distribute information to appropriate units or staff sections
- c. Analyze information:
- (1) Consolidate reports
 - (2) Anticipate events and activities, taking appropriate action as required
 - (3) Conduct predictive analysis based on the tactical situation
 - (4) Identify information that relates to the commander's critical information requirements
 - (5) Identify the need to execute contingency plans based on the current situation
- d. Submit recommendations to the commander:
- (1) Submit recommendations to the commander based on information available and analysis conducted
 - (2) Submit recommendations to the Battalion TOC as required
- e. Integrate resources:
- (1) Coordinate the integration of combat multipliers (fire support, aviation, MPs, engineers, PSYOP, CA, intelligence assets, armor, combat health support) into maneuver planning and execution
 - (2) Request specific combat multipliers for specific missions
 - (3) Manage interpreters and integrate into the patrol plan
 - (4) Integrate joint and pure ISF missions into the patrol plan
- f. Synchronize resources:
- (1) Coordinate the synchronization of combat multipliers to achieve the desired effects (echeloning fires, A2C2, combined PSYOP/CA missions, etc.)
 - (2) Conduct clearance of fires
 - (3) Synchronize combat multipliers with changes in the maneuver plan
4. Company Planning Bay:
- a. The company planning bay gives units the space and tools available to plan, AAR, and conduct patrol debriefs (see Section 3-5 for a complete list of planning bay equipment)
 - b. The planning bay provides a suitable location to brief ISF; ensure that any classified or sensitive formation can be easily covered up for ISF briefings
 - c. The planning bay includes maps and planning boards which allow the patrol leader to fill-in-the-blanks while developing patrol orders (see Annex E for a patrol order format that can be permanently written on planning boards with space available for the patrol leader to write)
 - d. The planning bay serves as a location for AARs and patrol debriefs; patrol AAR boards will be posted in a fill-in-the blanks format

SECTION 2: COMPANY COMMAND POST MANNING

1. The Company CP manning plan must take into account personnel leave, refit, and injuries; company leaders must be prepared to rotate additional personnel into and out of CP duty positions
2. Company Battle Captains (see Section 2-6 for battle captain imperatives):

2 BCT, 101st ABN DIV (AASLT), Company, Battery, and Troop CP Operations SOP

- a. Minimum two Officers or NCOs (E-5 and above) to facilitate day and night shifts (can be the company FSO & FSNCO or other designated personnel)
 - b. Run current operations as the Company Battle Captain
 - c. Assist the Intel NCO in running the Company Intelligence Cell as required
 - d. Attend company Fusion, Targeting, and Planning Cell meetings (see Section 5)
3. Company Intelligence Cell Organization (see Section 6 for a complete description of Company Intelligence Cell operations):
- a. At a minimum, companies will designate one capable NCO (or highly qualified Soldier) to serve as the Intel NCO; this Soldier must be highly competent, adequately trained for the position, and will have no significant duties other than running the Company Intelligence Cell
 - b. Additional manning for the Company Intelligence Cell will vary based on unit mission, manning, and commander's preference; personnel must periodically accompany patrols within the company AO in order to gain an understanding of the physical and human terrain (monthly at a minimum)
 - c. Below are two viable techniques for Company Intelligence Cell manning; commanders can use elements from one or both of these techniques to build a functional cell:

Technique 1: Platoon-centric Intelligence Cell

- (1) NCO plus 1-3 highly capable Soldiers per platoon designated as a platoon intel cell
- (2) Report to their platoon leadership but also take direction from the Company Intel NCO
- (3) Patrol with their platoons and serve as subject matter experts on intelligence collection, tactical site exploitation (TSE), tactical questioning (TQ), informant operations, and detainee operations
- (4) Assist the Platoon Leader and Company Intel NCO with patrol debriefing and intelligence analysis to include use of all intelligence programs, tools, and databases
- (5) Platoon Intelligence Cell members require specific pre-deployment training on both collection and analysis in addition to their basic MOS skills

Technique 2: Company-centric Intelligence Cell

- (1) Team-sized element of capable Soldiers working for the Company Intel NCO
 - (2) May patrol with platoons as required to assist in intelligence collection, TSE, and TQ
 - (3) Conduct patrol debriefs and supervise detainee operations
 - (4) Conduct intelligence analysis and ensure that platoons are briefed before patrols
 - (5) Company Intelligence Cell members require specific pre-deployment training on both collection and analysis in lieu of their basic MOS skills
- d. The Company Intelligence Cell must work closely with the battle captains to ensure that intelligence is being collected, tracked, and reported effectively

4. Company RTOs:

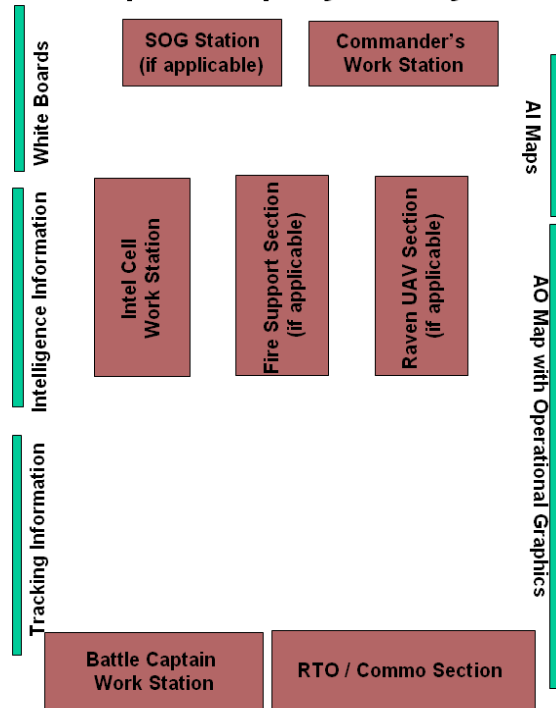
- a. Minimum six RTOs if the CP and CTCP are separate; if co-located, four RTOs are required
- b. Minimum two RTOs must be specially trained and highly proficient with all communications equipment; one each must be within easy reach of the CP and CTCP to assist the other RTOs
- c. Injured personnel can serve as temporary RTOs, but they must have the training to operate all communications and tracking tools in the CP

- d. RTO Breakdown:
 - (1) Day CP RTO
 - (2) Night CP RTO
 - (3) Day CTCP RTO (if CTCP not collocated)
 - (4) Night CTCP RTO (if CTCP not collocated)
 - (5) Commander's RTO (assists Day CP RTO when not out with the commander)
 - (6) Float RTO (Floats to allow RTOs to refit, attend training, and go on leave)
5. Based on battalion requirements, if the company CP is not on the same FOB as the Battalion TOC, one company leader may need to physically locate on the BN FOB on a rotational basis; this leader attends battalion targeting meetings and coordinates with staff elements
6. Battle Captain Imperatives:
 - a. The battle captain runs the CP and must take ownership of all activities within; his orders both in the CP and to units in the field carry the weight of the commander
 - b. The battle captain must be prepared to clear fires as required; he must know the exact location of all friendly units in the company AO and have a rehearsed clearance-of-fires battle drill
 - c. The battle captain must understand the commander's intent and be capable of taking action in his absence
 - d. The battle captain must actively prevent fratricide within the company and with external units in the company AO to include ISF and engineer units; direct coordination with other companies and their higher headquarters is especially critical during operations on or near unit boundaries
 - e. The battle captain will submit timely, clear, and accurate reports to the Battalion TOC; he will also assist the company command group in completing and submitting daily reports to include:
 - (1) Blue 1 Report (daily summary)
 - (2) Green 2 Report (sensitive items accountability)
 - (3) Company LOGSTAT
 - (4) Company PERSTAT
 - (5) Commander's Update Brief
 - (6) Daily Targeting Report
 - f. The battle captain will enforce SOP patrol procedures to include pre-patrol and post-patrol actions (see Section 4 for patrol departure, tracking, and re-entry procedures)
 - g. The battle captain will be prepared to launch and employ company QRF elements as required
 - h. The battle captain will always have a CASEVAC plan for all units; if aircraft cannot fly, he will designate dedicated ground CASEVAC vehicles and personnel and determine CASEVAC routes
 - i. The battle captain will direct and control supporting aviation assets in the company AO
 - j. The battle captain must not allow the CP to become crowded; it is not a hang-out
 - k. The battle captain must keep noise down inside the CP to facilitate clear communications; this is especially important during a troops-in-contact situation or when clearing fires
 - l. The battle captain will enforce OPSEC in the CP; he will ensure that Soldiers do not place their classified flash disks in NIPR computers and that open communications back to the U.S. are halted during periods of comms black-out or before sensitive operations
 - m. The battle captain must periodically accompany patrols within the company AO in order to gain an understanding of the physical and human terrain; he will patrol monthly at a minimum

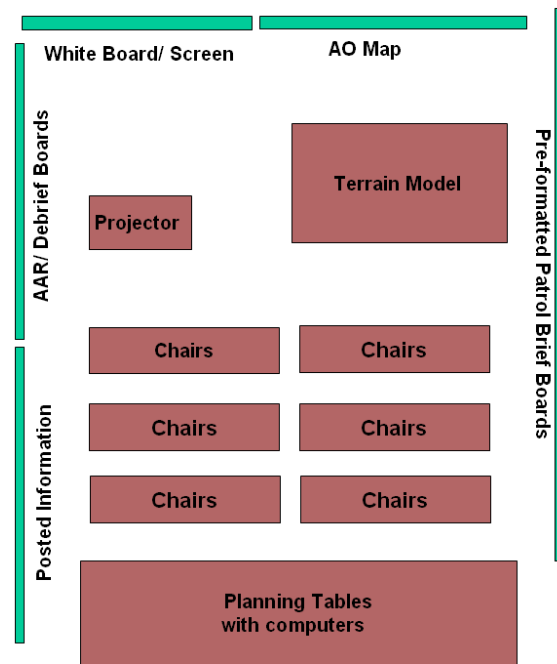
SECTION 3: REQUIRED EQUIPMENT

1. Not all CP equipment will last the duration of an extended deployment; units should acquire replacement and repair parts for equipment most likely to fail (printers, CD drives, hand mikes, etc.)
2. Sample Company CP and Planning Bay layouts (individual company layouts will vary based upon space available and commander's preference):

Sample Company CP Layout



Sample Planning Bay Layout



3. Company CP Equipment:

a. Communications Equipment:

- (1) Minimum three FM radios with power amplifiers, antennas, and current COMSEC
 - Battalion Command Net
 - Company Command Net
 - Fires Net or Battalion O&I Net (based on situation)
- (2) Blue Force Tracker
- (3) TACSAT (if available and subordinate maneuver units have a TACSAT)
- (4) HF Radio (if available and subordinate maneuver units have HF radio)
- (5) VOIP Phone (if SIPR available)
- (6) Informant Cell-phone with the following Arabic phrase attached to the phone: "*Da-kee-ka, moo-tar-jin rah hee-jee*": "Wait one minute, an interpreter will come"; interpreters must be available at all times to assist with informant phone calls
- (7) RTO Log (never throw away completed logs in case of legal investigations)
- (8) Current commo card
- (9) Laminated pre-formatted MEDEVAC card (Refer to Annex I)
- (10) Laminated pre-formatted UXO/IED card (Refer to Annex J)
- (11) Back up generator for CP communications

b. Digital Equipment:

- (1) Minimum three computers
 - Battle captain computer (SIPR connected if available at CP)
 - Intelligence computer (SIPR connected if available at CP)
 - Planning computer (must be able to be moved to the planning bay)
- (2) Color printer
- (3) Projector and screen or large-screen TV
- (4) Designated secret flash discs for transferring intelligence
- (5) CP computers must have required intelligence, reporting, and tracking software installed based on mission, availability, and commander's preference (TIGR Net, CIMS, Falcon View, Access Pro, Crystal, etc.)

- (6) Raven UAS Work Station with TV Display and MIRC Chat (if SIPR available at CP)
 - c. Tracking Tools (may be maintained digitally, but a current hard copy must be displayed):
 - (1) Large AO map with operational graphics and moveable unit icons (see Annex A-1)
 - (2) AI maps (see Annex A-2)
 - (3) SIGACT tracker (digital or on butcher block)
 - (4) Patrol tracker (see Annex A-3)
 - (5) Personnel number tracker (how many total personnel are at each location or patrol)
 - (6) Forward LOGSTAT tracker (if CP is not co-located with the CTCP)
 - d. Intelligence Tools (may be maintained digitally, but a current hard copy must be displayed):
 - (1) Current BN CCIR with associated company SIR
 - (2) Current Personnel and Vehicle BOLO List
 - (3) Tribal Overlay (see Annex B-1)
 - (4) Political Overlay (see Annex B-2)
 - (5) Key Infrastructure Overlay (see Annex B-3)
 - (6) Neighborhood Overlays (if required) (see Annex B-4)
 - (7) Religious Overlay (see Annex B-5)
 - (8) Enemy SITTEMPs (with link diagrams as required) (see Annex B-6)
 - (9) Pattern Analysis Tools (see Annex B-7)
 - (10) Informant Overlay (see Annex B-8)
 - (11) Predictive analysis board (predictions for next 48 hours and for next few weeks posted)
 - (12) Cork board to post new products from the Battalion S-2
 - (13) Current SWEAT Assessments
 - (14) Current light and weather data
 - (15) Detainee processing kits with additional sworn statements
 - e. Critical information (may be maintained digitally, but a current hard copy must be displayed):
 - (1) Current IO themes
 - (2) Company, Battalion, and BCT mission statements and commander's intent
 - (3) Current troop to task & battle rhythm
 - (4) Sector sketches for company TCPs and defensive positions
 - (5) Posted patrol schedule
 - (6) Three dry erase boards
 - Tasking Board
 - Tracking Board
 - Sketch/Hasty Planning Board
 - f. Fire Support Station (if applicable)
 - (1) LCMR Computer (if LCMR available)
 - (2) Incoming IDF warning siren system (if LCMR available)
 - (3) Mortar work station (if applicable)
 - LHMBBC
 - Fire mission planning board
 - LMR (to talk to guns)
 - g. Sergeant-of-the-Guard (SOG) Station (if applicable)
 - (1) LMR set to guard frequency
 - (2) Combat Outpost Sector Sketch
 - (3) SOG Checklist
 - h. Furniture and supplies:
 - (1) 3-5 large tables
 - (2) 4-10 chairs
 - (3) Dry erase markers, dry eraser, permanent and non-permanent map markers, protractor, yardstick, lamination paper, scissors, pins
4. CTCP Equipment (most equipment required only if CTCP is separate from Company CP):

- a. Communications Equipment
 - (1) Minimum two FM radios with current COMSEC available
 - Company Command (required only if CTCP is separate from Company CP)
 - A&L (can be switched to BN CMD based on situation)
 - (2) VOIP Phone (required only if CTCP is separate from Company CP)
 - (3) RTO Log (required only if CTCP is separate from Company CP)
 - (4) Current commo card (required only if CTCP is separate from Company CP)
 - b. Digital Equipment:
 - (1) NIPR company admin computer
 - (2) SAMS-E computer
 - (3) SIPR computer (required only if CTCP is separate from Company CP)
 - (4) Printer (required only if CTCP is separate from Company CP)
 - c. Tracking Tools:
 - (1) LOGSTAT tracker
 - (2) Posted patrol schedule (required only if CTCP is separate from Company CP)
 - (3) AO map with operational graphics (required only if CTCP is separate from Company CP)
 - (4) Area of Interest (AI) maps (required only if CTCP is separate from Company CP)
 - (5) Two dry erase boards
 - XO/1SG tasking board
 - Admin & logistics board
 - d. Furniture:
 - (1) 1-4 large tables
 - (2) 2-8 chairs
 - (3) Dry erase markers, dry eraser, permanent and non-permanent map markers, protractor, yardstick, lamination paper, scissors, pins (required only if CTCP is separate from Company CP)
5. Planning Bay Equipment:
- a. Planning & Briefing Tools:
 - (1) Large AO Map with Operational Graphics
 - (2) 4-10 dry erase boards pre-formatted for planning in permanent marker
 - (3) 3-5 dry erase boards pre-formatted for patrol AARs
 - (4) One butcher block tablet
 - (5) Planning table
 - (6) Projector and screen or large-screen TV
 - (7) Sand table
 - (8) 10-20 chairs
 - b. Posted Information:
 - (1) Current IO themes
 - (2) Company, Battalion, and BCT mission statements and commander's intent
 - (3) Sector sketches for company TCPs and defensive positions
 - (4) Copies of all intelligence overlays posted in the CP (except informant overlay)
 - (5) Removable opaque covers for all sensitive information (to declassify the planning bay)
6. Rehearsal Area Equipment:
- a. Rehearsal Area
 - (1) Large enough open area to accommodate section-sized rehearsals
 - (2) Engineer tape and stakes (to construct floor plans, terrain features, helicopter seats, etc.)
 - b. Rehearsal Board
 - (1) One Dry erase board with markers and eraser
 - (2) Posted MTPs for frequently conducted tasks

SECTION 4: PATROL DEPARTURE, TRACKING, AND RE-ENTRY PROCEDURES

1. Pre-Patrol Procedures: Individual measures can be waived by the battle captain only in the event of an emergency departure. Units on QRF will have all pre-patrol requirements complete prior to assuming QRF. The battle captain is responsible for ensuring that departing patrols meet all requirements.

- a. A FRAGO and/or convoy brief is issued and disseminated to all personnel to include ISF and attachments; order should be sufficiently detailed in accordance with unit SOP (see Annex E for a sample pre-formatted patrol order)
- b. PCIs/PCCs are conducted on all soldiers and vehicles using PCI/PCC checklists (see BCT Consolidated SOP, Chapter 2, for vehicle PCI/PCC checklist)
- c. Rehearsals are conducted in the company rehearsal area:
 - (1) Critical patrol tasks, as identified by the patrol leader, are rehearsed prior to each patrol
 - (2) ROE and EOF are rehearsed weekly at a minimum, or after any procedural changes
 - (3) Vehicle, rollover, egress, and recovery drills are rehearsed weekly at a minimum
 - (4) Weapon crew drills are rehearsed weekly at a minimum
 - (5) Mounted and dismounted battle drills are rehearsed weekly at a minimum

- (6) Other rehearsals are conducted as directed by the commander
 - d. Patrol Warlock and ECM systems are tested (if Warlock test equipment is available); the battle captain will be warned to ensure he anticipates the temporary communication interference
 - e. Radio checks are conducted on primary, alternate, and contingency/emergency (PACE) communications equipment within the patrol, with the Company CP, and with any unit with which link-up procedures are planned
 - f. The patrol leader will receive an updated intelligence brief from the Company Intelligence Cell
 - g. The patrol leader will receive an updated friendly situation brief from the battle captain; key information from this brief is the location, mission, and contact information for all coalition units in the patrol's AO and AI
 - h. The patrol leader will provide the following information to the battle captain:
 - (1) Patrol task and purpose
 - (2) Patrol graphics to include routes and fire control measures
 - (3) Estimated timeline
 - (4) Completed patrol pass (see Annex K for a sample patrol pass format)
 - i. The battle captain ensures that all security personnel and/or nearby patrols are briefed on the patrol departure plans, re-entry plans, and any associated fire control measures
2. Departure Procedures:
- a. The patrol leader ensures that Soldiers load weapons and switch on all Warlocks and ECM equipment as the patrol leaves the wire
 - b. The patrol leader calls the battle captain as he physically leaves the wire; he reiterates task, purpose, and personnel & vehicle numbers for the battle captain
 - c. The battle captain calls departure to the Battalion TOC; he reiterates task, purpose, and personnel & vehicle numbers for the Battalion TOC
3. During the Patrol:
- a. The patrol leader will call a radio check with an accurate grid location every 30 minutes at a minimum; if stationary the patrol leader must still call and report no change to location
 - b. If primary and alternate communications with a patrol fail, the battle captain will be prepared to execute a loss of communications contingency plan according to unit SOP and/or mission specific patrol planning. At a minimum:
 - (1) If the patrol is unable to re-establish communications on primary and alternate systems, the patrol leader will initiate the contingency communications plan (probably a visual signal)
 - (2) Once a planned radio check elapses, the battle captain will attempt to initiate communications with the patrol; if this fails he will instruct security personnel and nearby coalition elements to watch for contingency and emergency signals
 - (3) Upon identification of a contingency or emergency signal, the battle captain will react to the signal according to the unit SOP and/or mission specific patrol plan
 - (4) If no signal is observed, the battle captain will direct another patrol, a UAS, or an aviation asset to check the last known position of the missing patrol; movement must be initiated within 30 minutes of the missed radio check

- c. The battle captain will track accurate patrol locations on the AO map; he must always be prepared to clear fires anywhere in the company AO
- d. Units in contact will call report accurately to the battle captain; for direct fire contact this includes estimated distance, direction, and description
- e. The patrol leader will report to the battle captain anytime he enters or leaves a secured area (i.e. report arrival at the BN FOB back to the Company CP located at a combat outpost)

4. Post-Patrol Procedures:

- a. The patrol leader calls in his return before entering the engagement areas of any security personnel; the battle captain then ensures that all security personnel are briefed
- b. The patrol leader ensures that all weapons are cleared and that electronic warfare equipment is turned off as the unit re-enters a secured area
- c. The patrol leader checks in with the battle captain either by radio or in person; the battle captain also informs the Battalion TOC that the patrol has returned
- d. The battle captain ensures that all security personnel and relevant patrols know that the patrol has returned and are aware of current fire control measures
- e. The patrol conducts a full debrief and AAR in the planning bay, with a Company Intel Cell representative present, during which time information and intelligence is consolidated
- f. Company Intelligence Cell personnel conduct a patrol debrief with the patrol leader, completing a digital patrol de-brief (see BCT Patrol Debrief SOP), updating the Informant Personal Information Sheet (see Annex F) and the Informant Contact Log (see Annex G) after any meetings with company informants or potential informants, and digitally updating the Biographical Data Reports for any key leaders (see BCT Engagement SOP, Annex B)
- g. The Company Intelligence Cell and patrol leader update all patrol trackers, intelligence trackers, and unit databases
- h. The battle captain and patrol leader update the “honesty trace” (see Annex A-1h)

SECTION 5: COMPANY FUSION, TARGETING, AND PLANNING CELL

- 1. Organization of the Company Fusion Targeting, and Planning Cell: The cell meets regularly (minimum once per week) but is not a permanently manned organization; it exists to assist the company commander to assess past operations and to plan future operations
 - a. Key personnel:
 - (5) Company Commander or XO
 - (6) FSO or FSNCO
 - (7) Primary battle captain
 - (8) Company Intel NCO (and other members of the Company Intel Cell as required)
 - b. Resources required:
 - (1) Operations map with current “honesty trace” (see Annex A-1h)
 - (2) Updated intelligence trackers
 - (3) Updated patrol trackers
 - (4) All patrol debriefs and contact reports since the last meeting
 - (5) Updated informant log and biographical data reports
 - (6) Updated SWEAT assessments
 - (7) Current troop-to-task
 - (8) Recent battalion intelligence

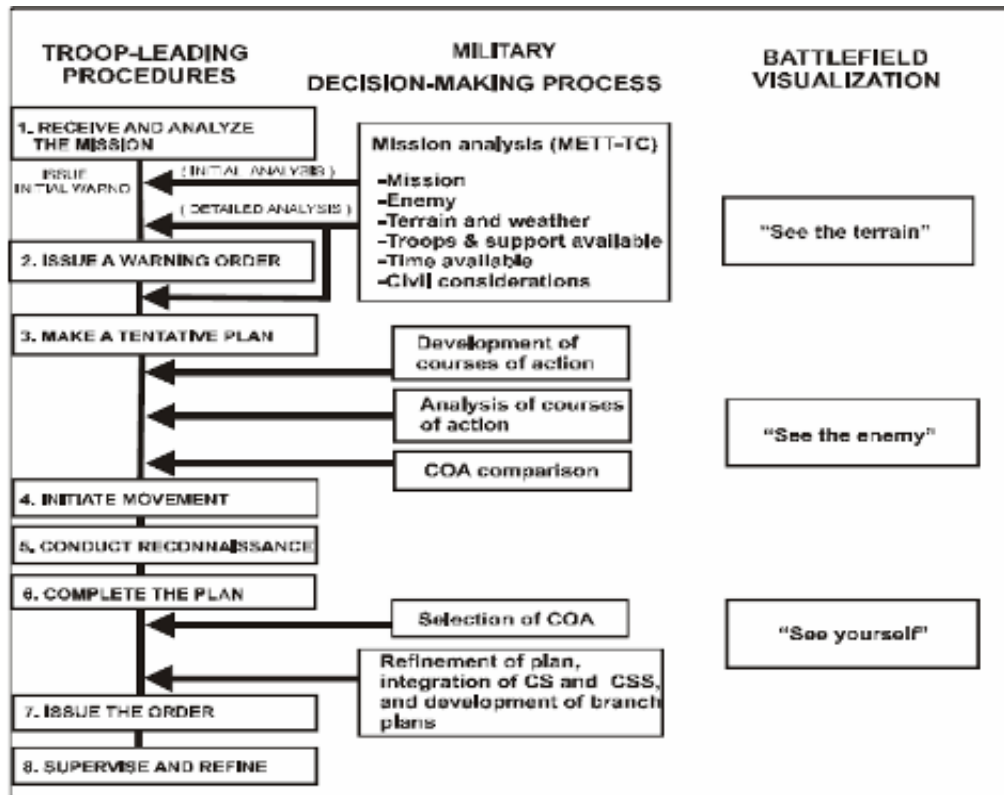
(9) Recent battalion FRAGOs

2. Duties of the Company Fusion Targeting, and Planning Cell:

- a. Within the Operations Process - "Plan, Prepare, Execute, and Assess" - the cell conducts the functions "Assess" and "Plan"
- b. Assess:
 - (1) Review patrol debriefs and "honesty trace" to identify patterns set by friendly forces
 - (2) Review patrol debriefs and intelligence trackers to identify enemy trends, possible lethal or non-lethal targets, and anticipated future enemy courses of action
 - (3) Determine which trends and targets need further refinement by battalion or higher S-2; push the data to battalion S-2 for further analysis
 - (4) Determine which trends and targets need further information that can be developed by company-level intelligence collection
 - (5) Determine which trends or targets require offensive action or a change to company operating procedures
 - (6) Review and update the SWEAT assessments as required
 - (7) Review relevant measures of effectiveness (MOE) and determine general trends
- c. Plan:
 - (1) Review battalion FRAGOs to identify assigned missions and other specified tasks
 - (2) Review troop-to-task versus assigned missions to identify which units, dates, and times are available for additional company missions
 - (3) Plan missions based on results of enemy assessment
 - (4) Identify necessary changes to company operating procedures based on patterns being set
 - (5) Plan in accordance with BCT targeting methodology to gain and maintain direct or indirect contact across all four BCT lines of operation (LOO) (see Annex D for more information on the BCT targeting methodology):
 - Security LOO
 - Economy LOO
 - Government LOO
 - Services LOO
- d. End state to cell meetings:
 - (1) A draft FRAGO for company operations
 - (2) An analysis of the enemy situation for the battalion S-2
 - (3) An updated SWEAT assessment for the battalion civil affairs team

3. Troop Leading Procedures (TLPs): When the company must conduct a deliberate operation, detailed planning is required beyond that conducted in a normal Fusion, Targeting, and Planning Cell meeting; the cell will assist the commander in conducting TLPs

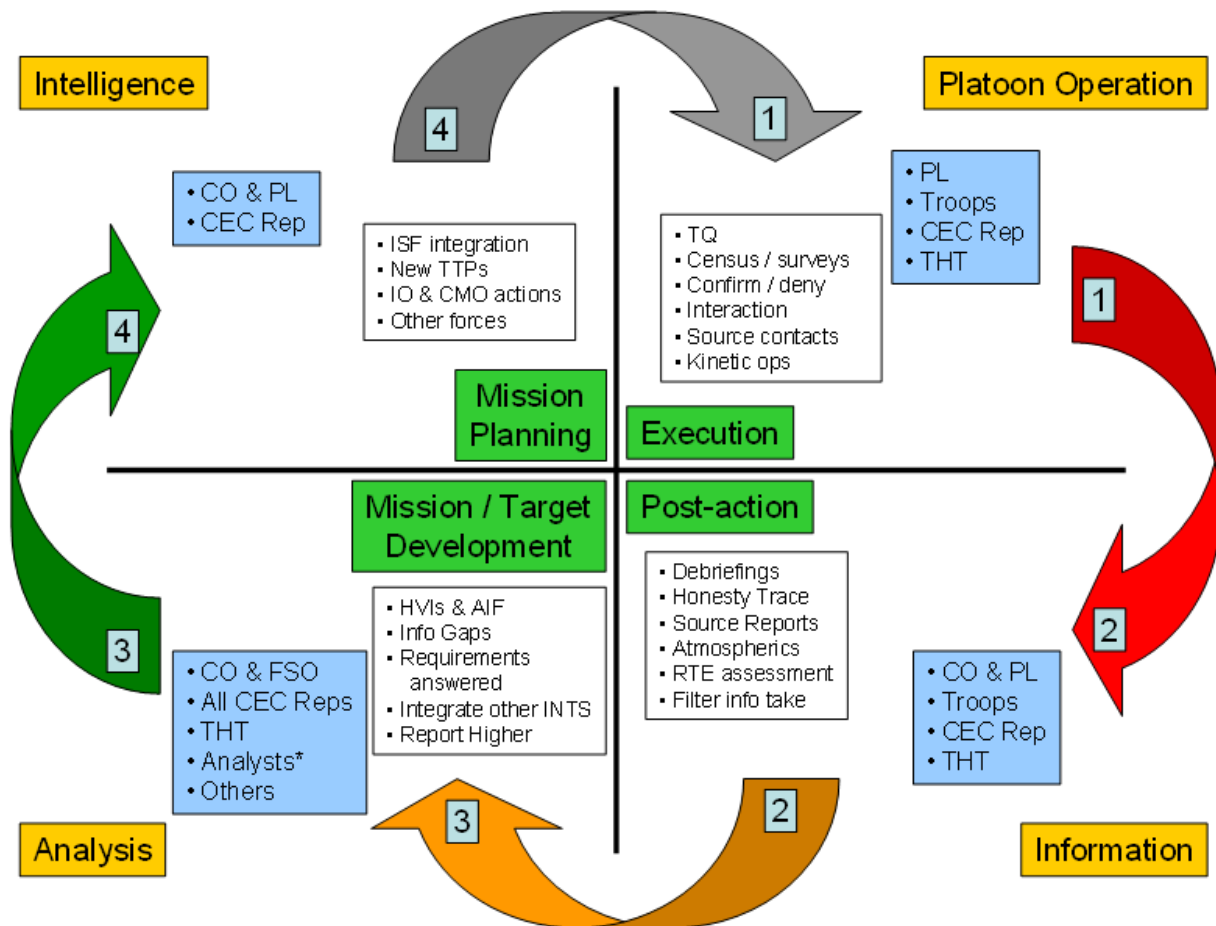
- a. The Fusion, Targeting, and Planning Cell provides the commander with a small staff that enables him to conduct a more detailed mission analysis and develop multiple COAs; TLPs in this situation will more closely resemble the traditional battalion MDMP:



- b. Risk assessment of both tactical and accidental risk is a critical component of both TLPs and daily planning; particular attention must be paid to the risks created by Soldier complacency and fatigue during extended steady-state operations
- c. Special attention to fire control measures and fratricide prevention must be given during TLPs when working with non-U.S. personnel

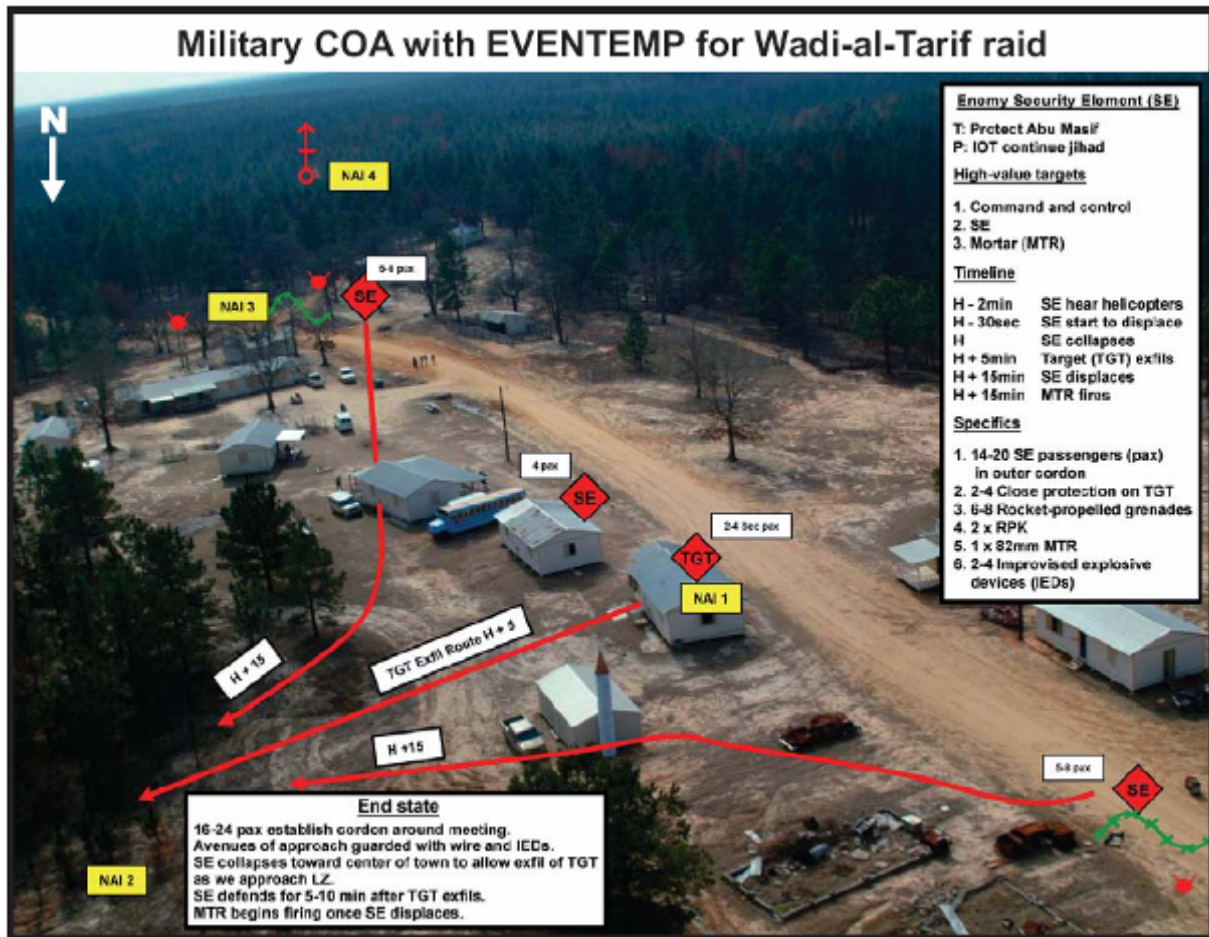
SECTION 6: COMPANY INTELLIGENCE CELL OPERATIONS

1. However the commander decides to task organize and employ the Company Intelligence Cell (see Section 2-3), the cell is responsible for assisting the commander with intelligence analysis, reporting and dissemination, detainee operations and tactical site exploitation, and intelligence collection
2. An effective Company Intelligence Cell will operate in a continuous cycle from mission development, through planning, execution, and post-patrol actions, and back to mission development in preparation for the next patrol:



3. The Company Intelligence Cell will ensure that all reports, database entries, patrol debriefs, and detainee packets have Arabic names, titles, and tribes spelled in accordance with the theater transliteration spelling standards (see Annex L for an inclusive list of transliteration standards); this facilitates tracking of individuals in theater and unit databases
4. Intelligence Analysis Requirements:
 - a. The Company Intelligence Cell will assist patrol leaders in conducting all patrol debriefs in accordance with the BCT Patrol Debrief SOP
 - b. The Company Intelligence Cell will continuously update all intelligence trackers and databases (see Annex B) and maintain situational awareness within the company AO and AI
 - c. The Company Intelligence Cell will conduct predictive analysis and maintain a predictive analysis board identifying likely enemy activities both over the next 48 hours and over the next few weeks
 - d. The Company Intelligence Cell will analyze friendly trends from the enemy's perspective and identify unnecessary vulnerabilities and patterns the company is setting
 - e. The Company Intelligence Cell will request assistance from the Battalion S-2 to conduct specific detailed analysis beyond company capabilities
 - f. The Intel NCO will attend company Fusion, Targeting, and Planning Cell meetings (see Section 5)
 - g. The Company Intelligence Cell will assist the battle captain in enforcing OPSEC

- h. During TLP mission analysis, the Company Intelligence Cell will develop an Event Template (EVENTEMP) which identifies the enemy's most probable course of action with respect to time; this analysis assists the commander in developing his plan (see *CALL Newsletter 07-01: Tactical Intelligence*, page 49-50, for detailed information on EVENTEMP development):



5. Intelligence Reporting and Dissemination Requirements:

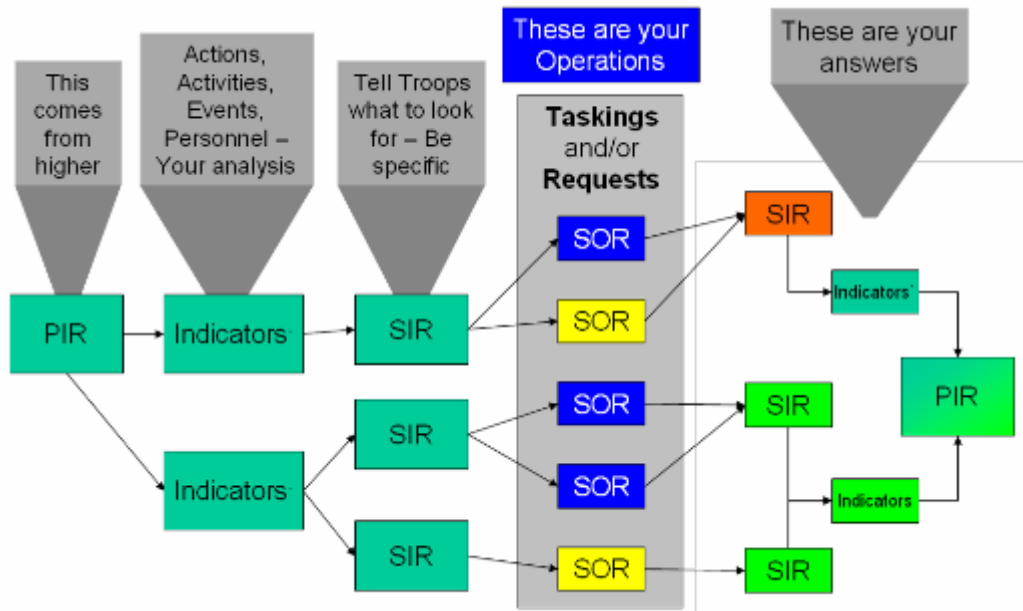
- a. The Company Intelligence Cell will establish clear communications with the Battalion S-2 and ensure that information flows both up and down the chain of command in a timely manner; the Intel NCO must be proactive and pull information from the Battalion S-2 and supporting agencies as required
- b. The Company Intelligence Cell will ensure that all patrols have updated intelligence information prior to departure to include updated intelligence from the Battalion S-2 (see Section 4-1f)
- c. The Company Intelligence Cell will brief attachments and units operating within the company AO
- d. The Company Intelligence Cell will post updated intelligence information for ease of reference by patrol leaders; appropriate OPSEC must be observed when choosing a location in which to post
- e. The Company Intelligence Cell will assist the commander in writing Paragraph 2 of combat orders

6. Detainee Operations and Tactical Site Exploitation Requirements:

- a. The Company Intelligence Cell will supervise company detainee operations and ensure that detainees are processed in accordance with the "5 Ss and T" (refer to the Strike Detainee

Operations SOP and *CALL Handbook 06-17: Detainee Operations at the Point of Capture* for more detailed information):

- (1) Search: Ensure all items taken are bagged and properly documented on a DA Form 4137 (see Strike Detainee Operations SOP, Tab B)
 - (2) Silence: Ensure detainees do not communicate with one another after capture
 - (3) Segregate: Keep detainees separate while respecting Iraqi cultural values (i.e. do not unnecessarily remove a female from the view of a male relative, do not take young children from their mother, never roughly handle a male in front of a female)
 - (4) Safeguard: Ensure detainees are protected from enemy attack, receive required medical care, and are not abused or humiliated by U.S. or Iraqi forces
 - (5) Speed: Ensure detainees are evacuated to the rear with adequate time to process into the BCT's Division Holding Area - Annex (DHAA) in accordance with theater policy:
 - The detainee must transfer to the DHAA within 24 hours of physical capture
 - The Intel NCO can request a 12 hour extension for operational concerns (36 hours total) by requesting the extension through the BN S-2 to the BCT S2X with final approval by the BCT DCO
 - (6) Tag: Each detainee will be tagged with a completed Coalition Provisional Authority Forces Apprehension Form (see Strike Detainee Operations SOP, Tab B); captured equipment will be documented on a DA Form 4137 annotated with the name of the associated detainee
- b. The Company Intelligence Cell will establish a detainee holding area (if no battalion area is available on-sight) to hold detainees temporarily while the detainee packet is completed:
- (1) Easily secured and guarded at all times by a Soldier briefed on the situation and ROE
 - (2) Provides protection from hostile fire
 - (3) Provides protection from the weather (blankets and/or extra clothes should be provided)
 - (4) Food and water are available
 - (5) Bathroom facilities are available
 - (6) Medical care is provided as required
- c. The Company Intelligence Cell will ensure that detainee processing is conducted in accordance with the Strike Detainee Operations SOP and any additional theater requirements; prosecution by the Central Criminal Court of Iraq (CCCI) is the goal for all detainee operations
- d. The Company Intelligence Cell will track company detainees from point of capture through prosecution by the CCCI; the BCT S2X is the point of contact for detainee tracking:
- (1) Communicate with the BCT S2X and/or BCT JAG to ensure all submitted evidence is sufficient for prosecution, and collect or consolidate additional evidence as required
 - (2) Track detainees being released back into the Company AO and ensure that patrols implement increased security as required (i.e. released IED emplacer will likely result in an increase in IEDs at a location that had previously been quiet)
- e. The Company Intelligence Cell will serve as the subject matter expert on tactical site exploitation and evidence handling and will ensure that all exploitation operations are conducted and documented correctly; the Strike Detainee Operations SOP provides instruction for evidence handling and documentation
- f. The Company Intelligence Cell will follow up on documents and equipment turned in to higher headquarters for exploitation
7. Intelligence Collection Requirements:
- a. The Company Intelligence Cell will receive, track, and answer battalion Priority Intelligence Requirements (PIR) by developing a company information collection plan:
- (1) Determine what indicators, positive or negative, will answer battalion PIR
 - (2) Assist the commander in developing Specific Information Requirements (SIR) which address the identified indicators
 - (3) Assist the commander in developing Specific Orders or Requests (SOR) for patrolling units and other ISR assets; these should focus ISR to answer SIR
 - (4) Use SIR to assess the identified indicators and answer the battalion PIR



- b. The Company Intelligence Cell will identify little-known areas within the company AO that require informal assessments by patrols to identify key leaders, infrastructure, and basic population information; this information will also become company SIR and SOR
- c. The Company Intelligence Cell will coordinate for and liaison with any external intelligence collection assets working with the company
- d. The Company Intelligence Cell will ensure that company-level tactical questioning (TQ) does not inadvertently become unlawful interrogation by following the guidance in the 101st Airborne Division (Air Assault) *Commander's Guide to HUMINT Operations* and the Laws of Armed Conflict:
 - (1) Company TQ will involve direct questions only
 - (2) Company TQ will not use interrogation approaches, defined as “any means used to entice a detained person to give information he would not normally give”
 - (3) At no time will TQ involve threats directed at the detainee or his family
- e. The Company Intelligence Cell will ensure that company-level informant operations do not inadvertently become unlawful source operations by following the guidance in the 101st Airborne Division (Air Assault) *Commander's Guide to HUMINT Operations* and the Laws of Armed Conflict:
 - (1) Company informant operations are defined as passive versus active HUMINT collection
 - (2) Company informants may be sensitized to general information useful to the unit, but may not be tasked, either directly or implied, to collect specific information (“ask, don’t task”)
- f. The Company Intelligence Cell will ensure that all casual and regular informants are entered into the Informant Contact Log (see Annex G) and have updated Informant Personal Information Sheets (see Annex F); the Intelligence Cell will coordinate with the BN S-2 and HCT (HUMINT Collection Team, formally known as THT) for review of these products and the assignment of contact tracking numbers
- g. The Company Intelligence Cell will assist the commander in ensuring that regular informants are paid and accounted for in accordance with theater policy

- h. The Company Intelligence Cell should make every effort to hand reliable informants over to the unit's HCT as soon as possible to become legitimate sources
- i. To facilitate walk-in informants, the Company Intelligence Cell will establish an informant meeting and debriefing area and ensure that security personnel are prepared to receive local national informants:
 - (1) The meeting room should have chairs or couches, a table, drinks available, an ashtray, large-scale unmarked maps for map-tracking purposes, and no windows
 - (2) When walk-in informants are expected, ensure that security personnel are well briefed on what to expect and what to do when an informant arrives

SECTION 7: COMPANY TAC CP OPERATIONS

- 1. Whenever the commander goes forward of the CP, he will establish a small-scale company Tactical Command Post (TAC CP) to facilitate effective command and control
- 2. TAC Requirements: The composition of the Company TAC will vary depending on the type, size, and duration of the operation, whether the commander is mounted or dismounted, and whether the TAC is reporting back to the Company CP or directly to the Battalion TOC
 - a. For communications to the Company CP or to higher headquarters, to subordinate units, and to supporting units (aviation, EOD, etc.), the TAC will employ a minimum of one primary, one alternate, and one contingency/emergency (PACE) communication system; refer to table below for capabilities and limitations of available communication systems:

System	Planning Range	System Capabilities	System Limitations
---------------	-----------------------	----------------------------	---------------------------

SINGGARS: Mounted with Power Amplifier	12-20 km	- Wide distribution throughout BCT - Range can be extended with antennas or by setting up a retrans/relay station	- Line of sight system and is severely affected by terrain and weather; use LOS function on BFT and CPOF to estimate terrain effects
SINGGARS: Dismounted	3-7 km	- Wide distribution throughout BCT - Range can be extended with antennas or by setting up a retrans/relay station	- Short battery life (10-15 hours) - Line of sight system and is severely affected by terrain and weather; use LOS function on BFT and CPOF to estimate terrain effects
MBTR FM	2-5 km	- Much lighter than SINGGARS - Does not require an RTO - Can use 3 volt batteries	- Limited availability in BCT - Less range than SINGGARS due to reduced antenna capability
TACSAT	Unlimited	- Has FM as well as SATCOM capability with longer range than dismounted SINGGARS (4-10 km) - Mounted system with "X-Wing" antenna can transmit while moving	- Limited availability in BCT - Heavy system - Requires a trained operator - Dismounted system must be stationary for several minutes to set-up antenna for transmission - Poor transmission quality; must speak slowly to be understood - Short battery life (12-15 hours)
HF FM	Unlimited	- Not affected by physical location as much as TACSAT - Mounted system can transmit while moving - Variety of antennas available based on different missions and required range of communications	- Limited availability in BCT - Heavy system - Vulnerable to interception - Requires a trained operator - Dismounted system must be stationary for several minutes to ground system for transmission - Poor transmission quality; must speak slowly to be understood - Short battery life (12-15 hours)
LMR	1-3 km	- Wide distribution throughout BCT - Light weight	- Limited range - Not all U.S. units have LMR
BFT	Unlimited	- Wide distribution throughout BCT	- Limited to mounted or CP operations only
Cell Phone	Unlimited	- Light weight - Easy to have uninterrupted two-way conversations	- Limited availability in BCT - Very unsecure - Limited cell phone coverage in rural Iraq
Satellite Phone	Unlimited	- Light weight - Easy to have uninterrupted two-way conversations	- Limited availability in BCT - Unsecure - Reception vulnerable to clouds & dust

- b. For contingency/emergency communications and visual signaling, the TAC will carry multi-colored starclusters, smoke grenades, IR strobes, VS-17 panels, a chemlight buzzsaw, a laser pointer, visible and IR lights, and other mission specific devices
- c. If an USAF Joint Tactical Air Control (JTAC) element accompanies the TAC, direct communication with USAF fixed wing aviation is possible via their specialized comms equipment; if not, the TAC must relay through the BCT or BN TOC to communicate with fixed wing support
- d. Battle Tracking: The TAC must be prepared to track the battle with one or more tracking tools:
 - (1) A laminated set of operational graphics with a permanent map marker to facilitate battle tracking (i.e. crossing off buildings that have been cleared)
 - (2) An execution checklist; the battalion TOC must be using the same execution checklist as the company TAC to facilitate clear communications
 - (3) If the TAC is mounted, the BFT can be used to aid in battle tracking
 - (4) Other specialized operational graphics as required (fire support, CASEVAC, etc.)
- e. Other Company TAC Equipment:
 - (1) Current comms card
 - (2) Extra batteries for all comms equipment

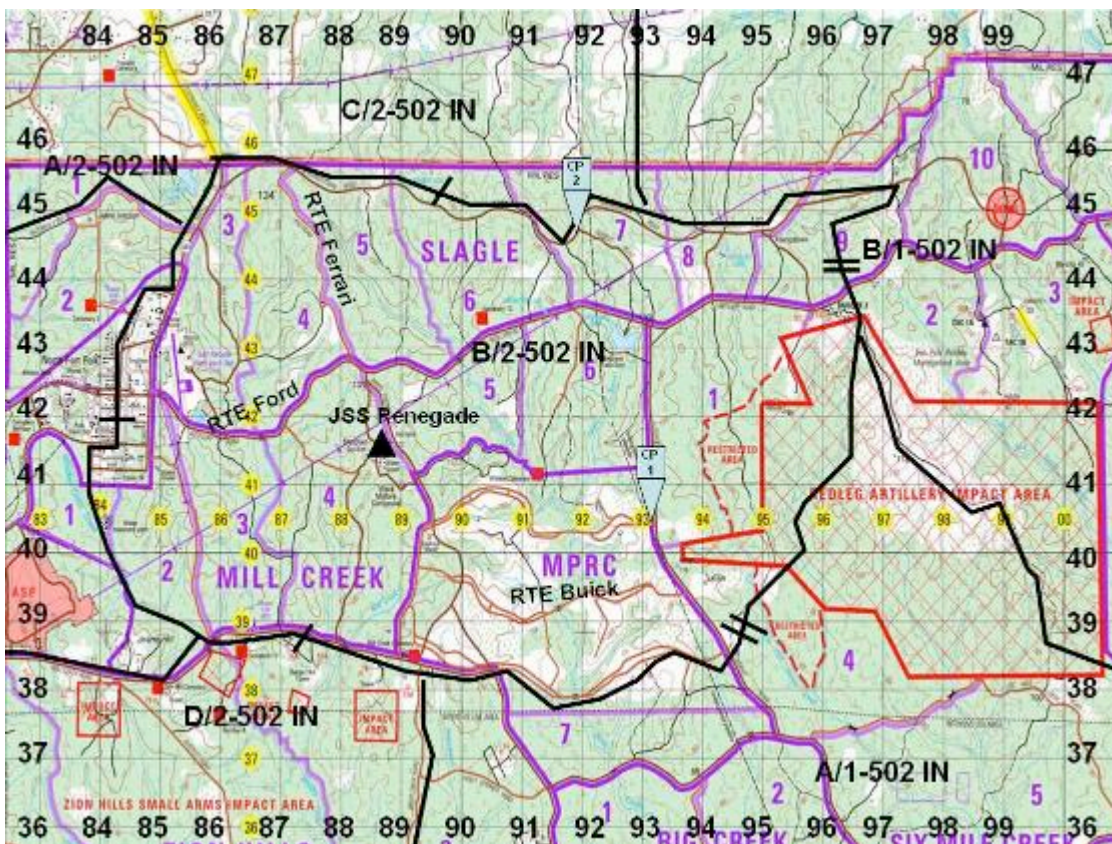
(3) Hands-free style flashlights

3. Key TAC personnel: The company TAC can range in size from 2-20 personnel depending on the mission and attachments; ensure that all TAC personnel are briefed, rehearsed, and accounted for at all times
 - a. RTOs: Minimum of one RTO for company command net and one RTO for communications to higher; for shorter duration, smaller-scale operations, the commander can use the MBITR to talk on company command net, thus reducing RTO requirements to one
 - b. FSO/FSNCO: While not required for small-scale operations, the FSO or FSNCO can help the commander by directing fires, talking to supporting aviation assets, monitoring the fires net, and running the TAC while the commander runs the battle
 - c. Company XO: While not required for small-scale operations, the XO can help the commander by tracking and coordinating logistical support, running PZs, and supervising critical supporting efforts
 - d. Company 1SG: While not required for small-scale operations, the 1SG can help the commander by coordinating CASEVAC in conjunction with the company medic, running PZs, and supervising critical supporting efforts
 - e. Security: If the TAC is not co-located with a maneuver element, a dedicated TAC security element is required
 - f. Additional attachments: Based on the mission, attachments to the company TAC can include a JTAC team, intelligence collectors, CA and PSYOP personnel, EOD assets, MiTT personnel, and other mission specific attachments

ANNEX A: COMPANY BATTLE TRACKING TOOLS

1. Newly fielded digital technology such as TIGR Net has the potential to improve company-level battle tracking; units should feel free to replace or augment tracking tools described in this SOP as long as:
 - Approval is given by higher headquarters
 - Current hard copies of digital information are still posted in the CP
 - All mandated information is still tracked

2. AO Map:
 - a. Large scale printed imagery of the AO and several kilometers of the adjoining area; map must be in a scale large enough to identify individual buildings and terrain features
 - b. Laminate the AO map and have erasable map markers affixed next to the map
 - c. Place a large cork board or metal surface behind the map to facilitate the use of push pins or magnets to battle track units and enemy events
 - d. ID all Control Measures on the map in permanent marker:
 - (1) Company Boundaries
 - (2) Road Names
 - (3) Checkpoints
 - (4) Permanent U.S. or ISF facilities
 - (5) Phase lines and sector designations
 - (6) Building Numbering
 - (7) Rewrite grid zone designators in large numerals to facilitate reading from a distance
 - e. The AO map should have a removable “honesty trace” overlay; patrols will trace their exact route after every mission to allow the Intel Cell to identify avoidable unit patterns

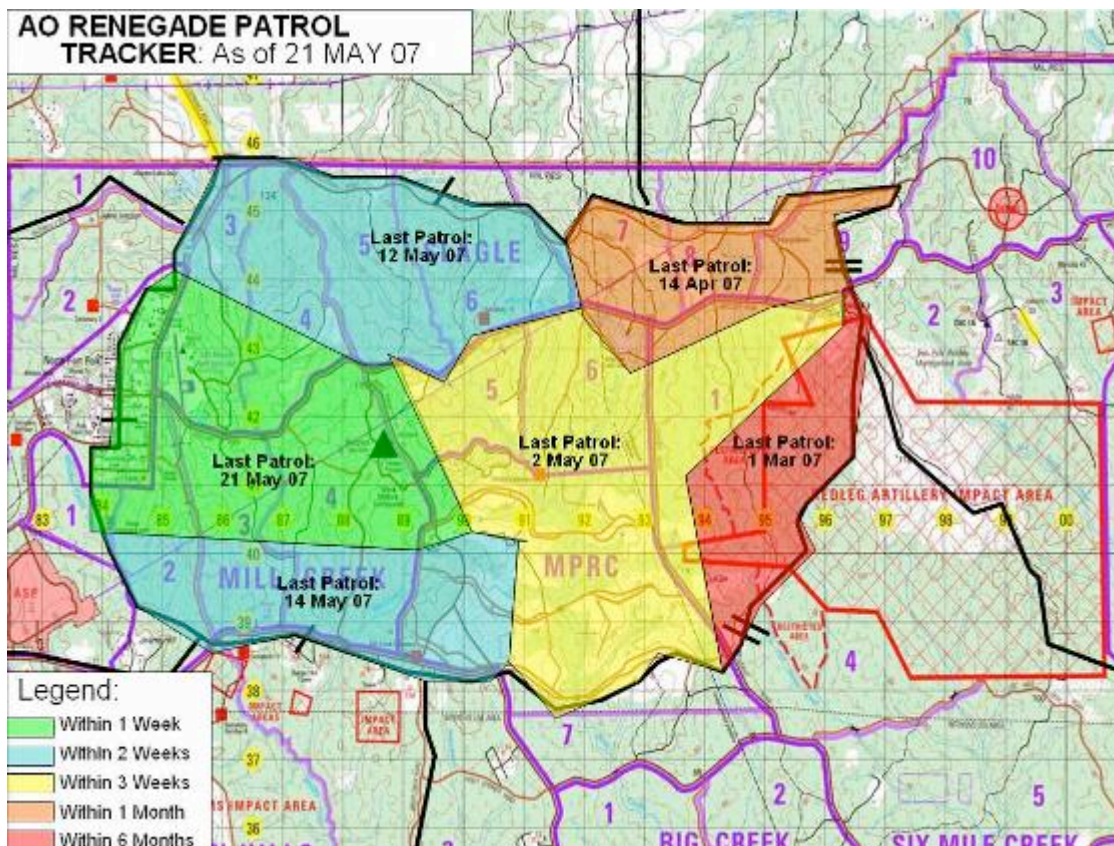


3. Area of Interest (AI) Maps:

- a. At a minimum, post one large map showing the entire AI; the size of this area is based on analysis and must show areas that affect the daily lives of the people in the AO or areas in which the unit may operate during a contingency mission
- b. Multiple smaller scale AI maps should be available (although need not be posted) to plan specific contingency missions or to conduct map tracking with informants (i.e. a map of Baghdad to show the route to the Green Zone or a map of Falluja to facilitate map tracking)

4. Patrol Tracker:

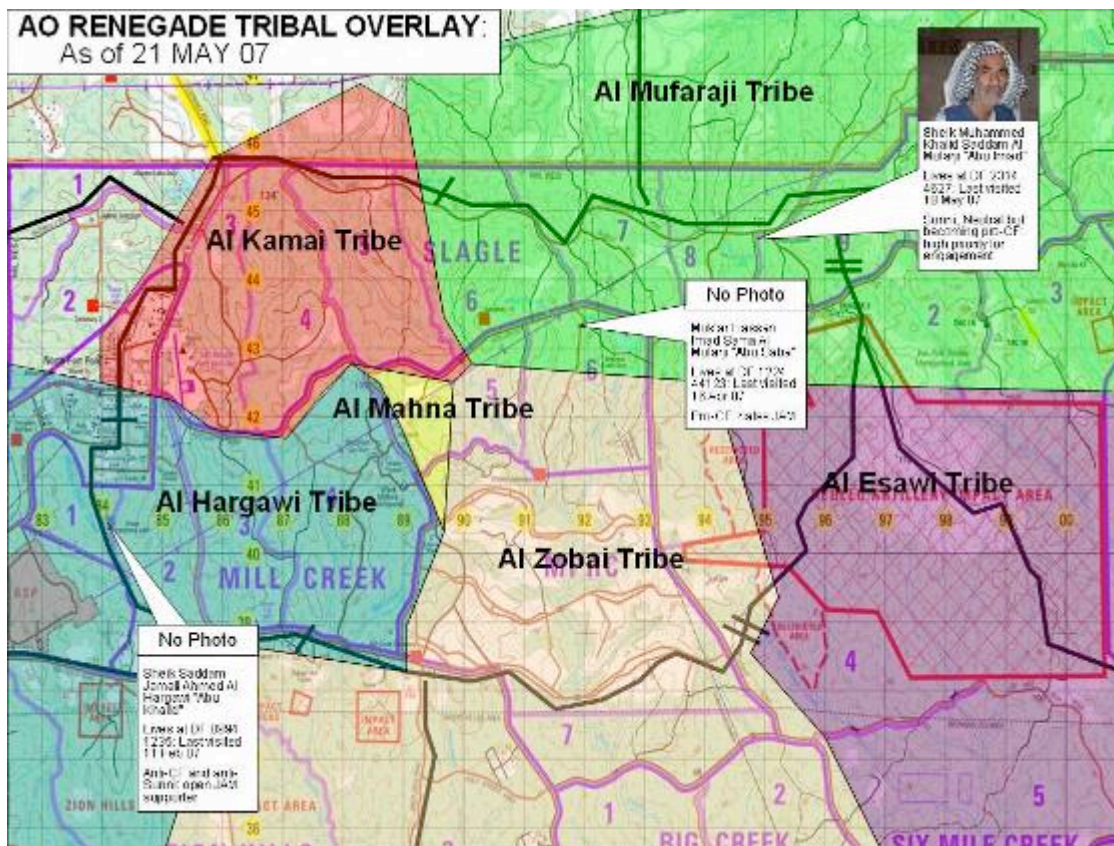
- a. Ensures that no areas of the AO are being neglected
- b. If “white pages” or a directory is being built, highlight areas that have not been catalogued
- c. One useful tracking technique is to “horse blanket” the company AO into smaller areas that can be easily referenced during the patrol debrief



ANNEX B: COMPANY INTELLIGENCE TOOLS

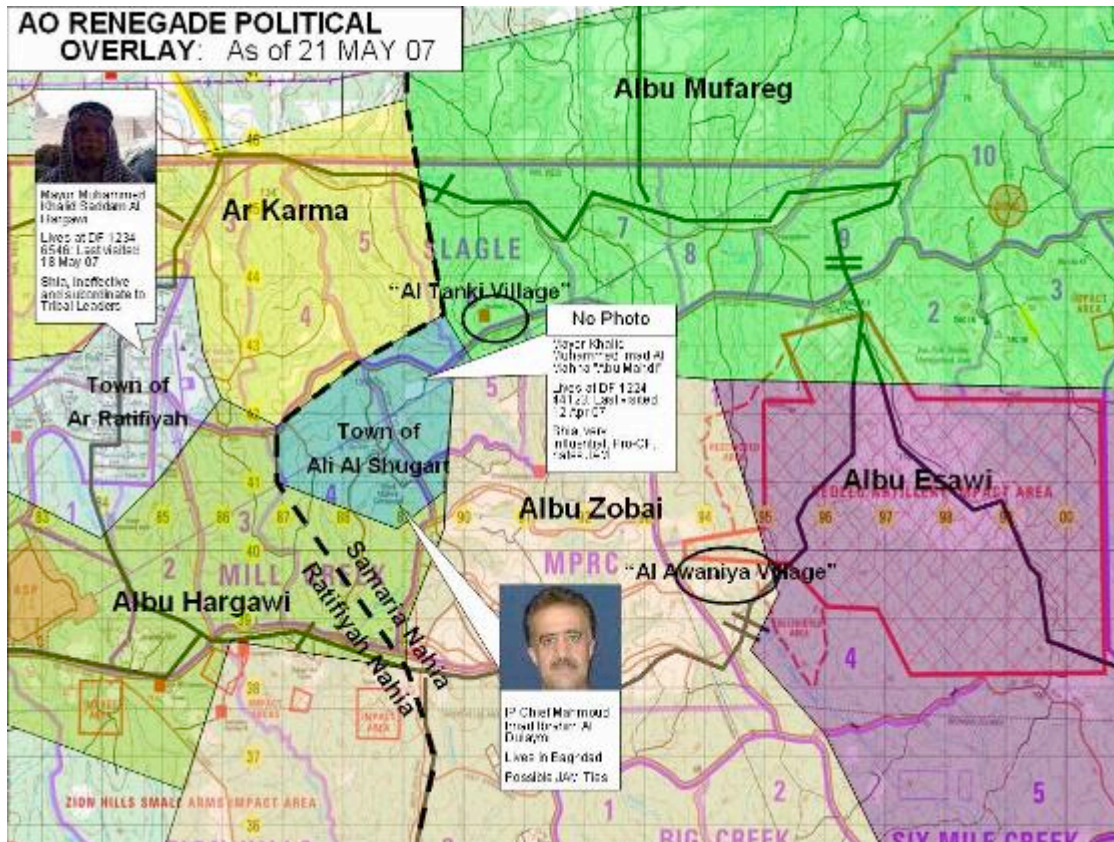
1. Newly fielded digital technology such as TIGR Net has the potential to improve company-level intelligence tracking; units should feel free to replace or augment the MS PowerPoint based tracking tools described in this SOP as long as:
 - Approval is given by higher headquarters
 - Current hard copies of digital information are still posted in the CP
 - All mandated information is still tracked

2. Tribal Overlay:
 - a. Break down AO by tribal areas (most tribal areas are not 100% pure; this tracker shows the majority tribe in an area)
 - b. Some tribes are not 100% Sunni or Shia even in a small area; identify sectarian enclaves on the tracker
 - c. Identify all tribal and informal leaders: Sheikhs, Muktar, influential local leaders
 - d. Leader pictures and tribe names can digitally hyperlink to existing digital reports



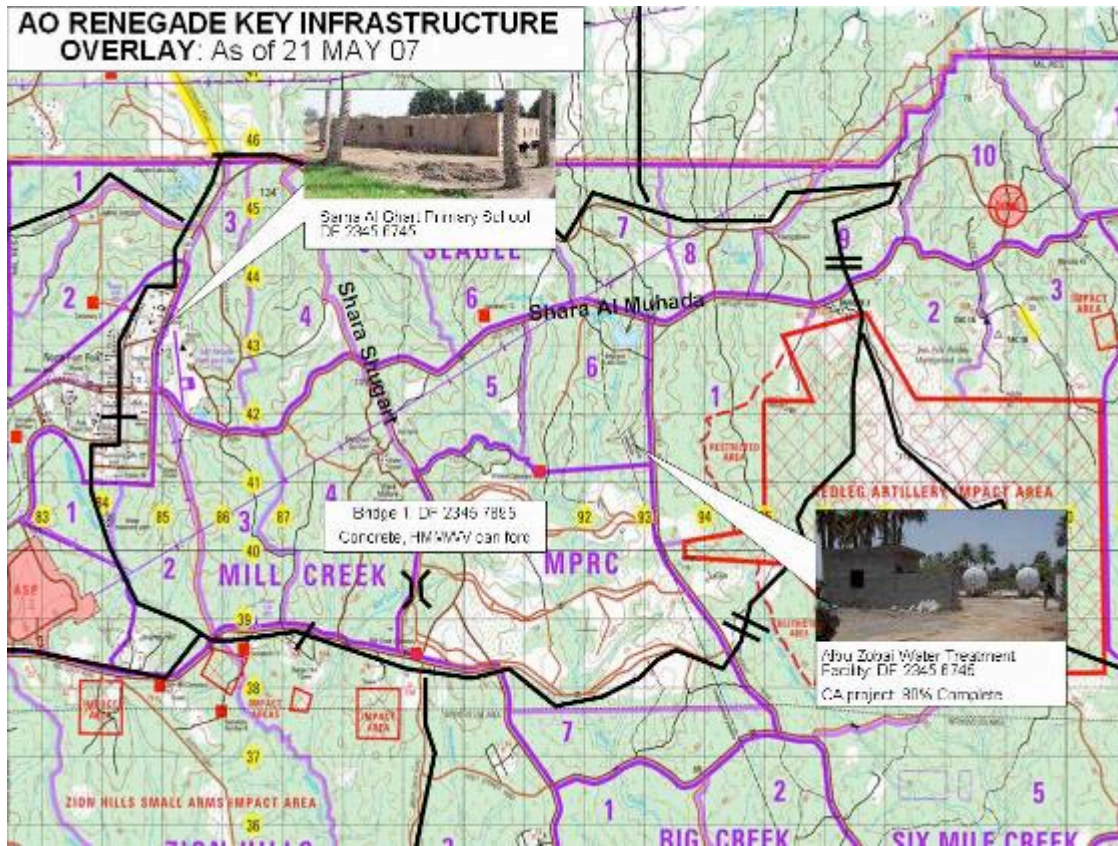
3. Political Overlay:

- a. Break down the AO by town or regional names (the names used by the local nationals)
- b. Identify Nahia and regional dividing lines
- c. Identify government leaders: Mayors, IP leaders, influential political leaders
- d. Leader pictures and town names can digitally hyperlink to existing digital reports



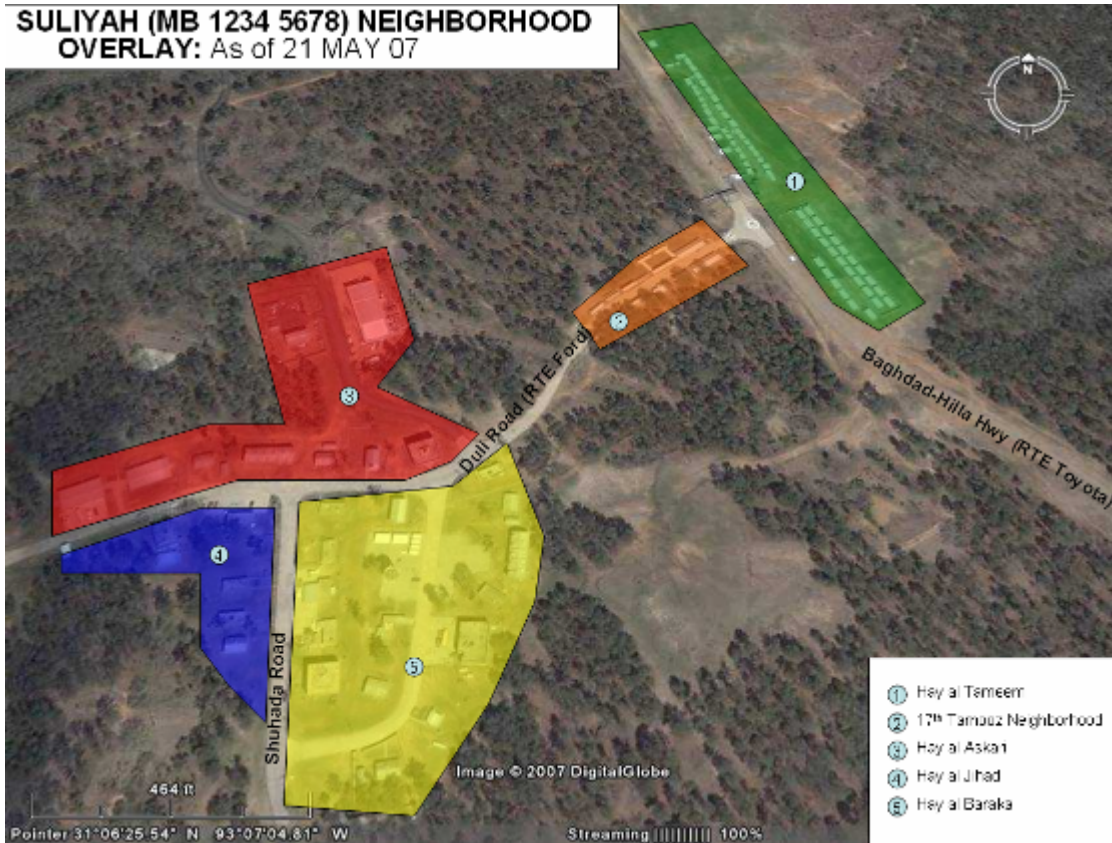
4. Key Infrastructure Overlay:

- a. Include road names using Iraqi naming conventions (not all roads in Iraq have are locally named)
- b. Include significant infrastructure, to include:
 - (1) Schools
 - (2) Public utilities
 - (3) Government buildings
 - (4) Bridges
 - (5) Medical facilities
 - (6) Ongoing CA projects
- c. Infrastructure pictures can digitally hyperlink to more detailed information



5. Neighborhood Overlays (if required by the company AO):

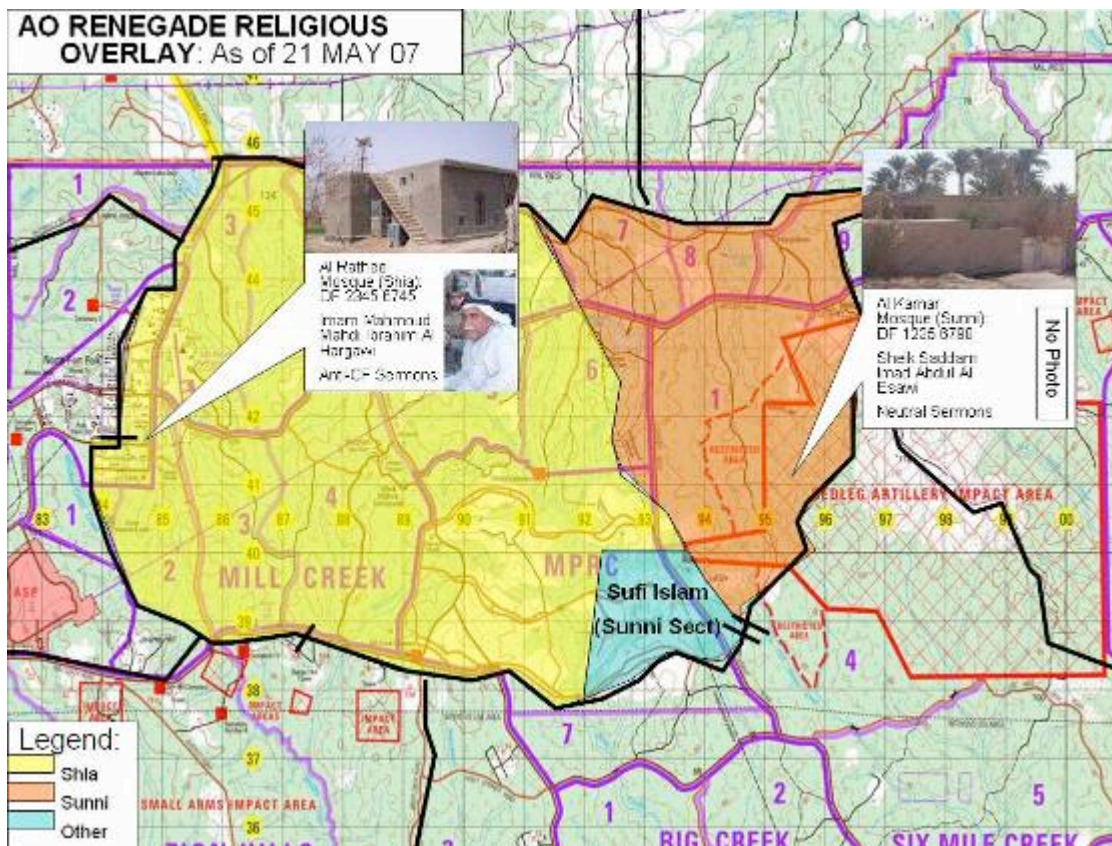
- a. Only required if the AO includes towns or cities with too much detail to include on the political and key infrastructure overlays
- b. Include neighborhood names, landmarks, and road names



6. Religious Overlay:

- a. Break down the AO by religious/sectarian lines to include sectarian enclaves

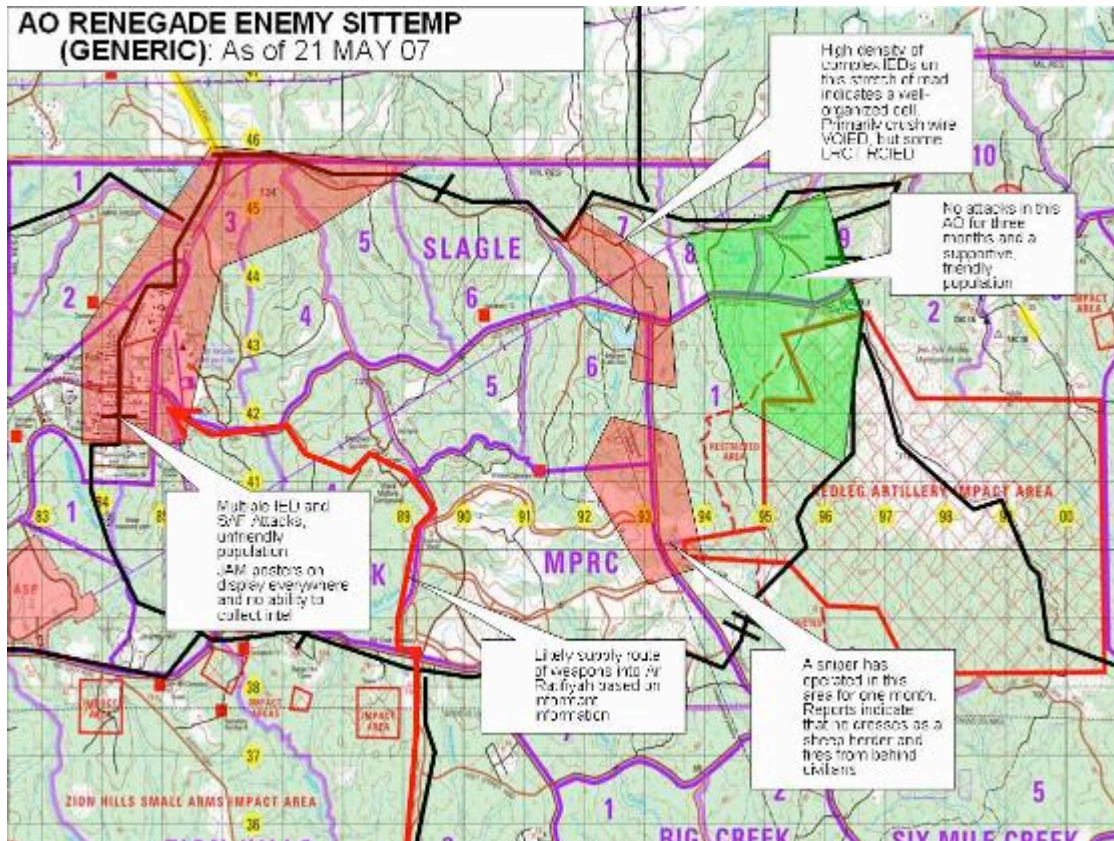
- b. Identify significant sects or sub-groups
- c. Imam and mosque pictures can digitally hyperlink to existing digital reports and previous mosque monitoring reports (see Annex H)

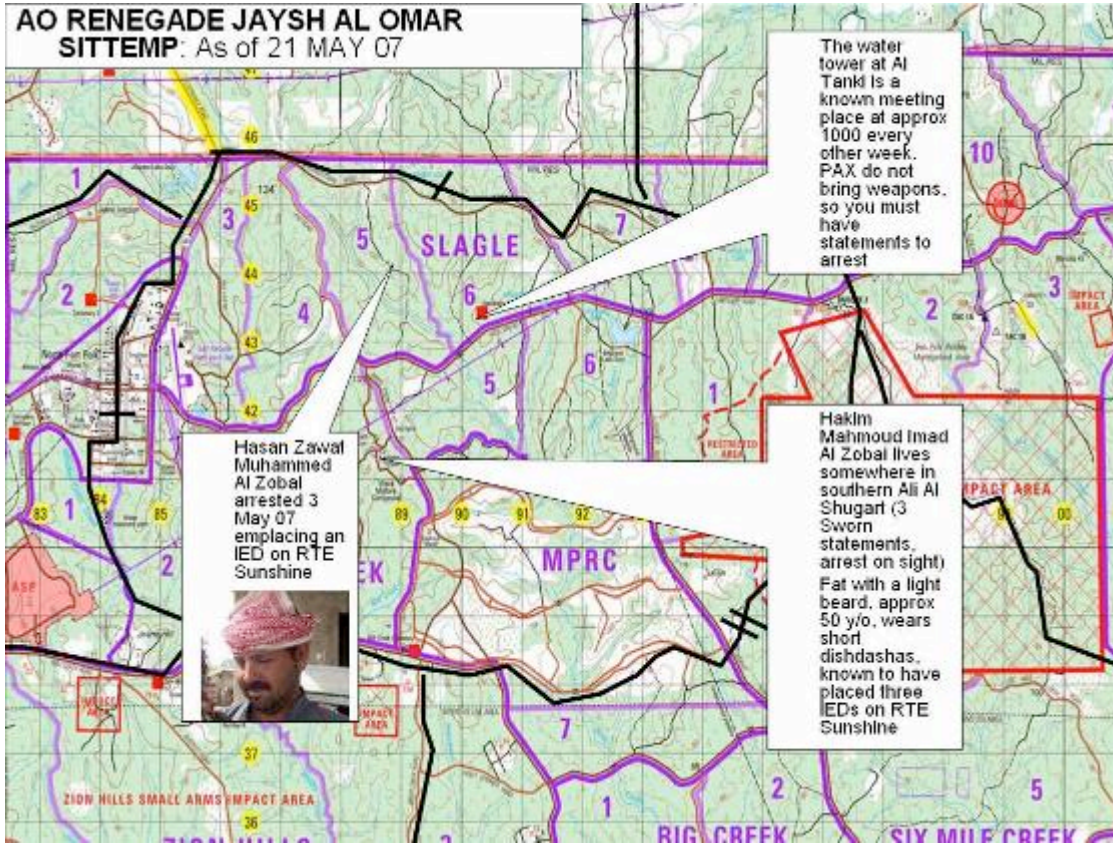


7. Enemy SITTEMPs:

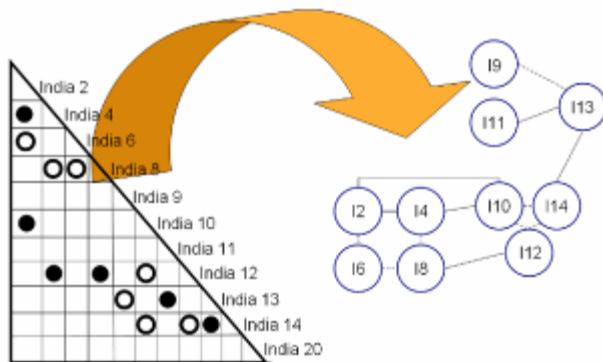
- a. Basic SITTEMP should include generic information about the enemy situation in the AO

- b. Detailed SITTEMPs cover one group or threat in much more detail
- c. Ensure local nationals who should be detained on sight are identified on the SITTEMP
- d. Pictures can digitally hyperlink to more detailed information
- e. Association analysis tools and link diagrams can be used as required to further analyze enemy information as presented on specific SITTEMPs

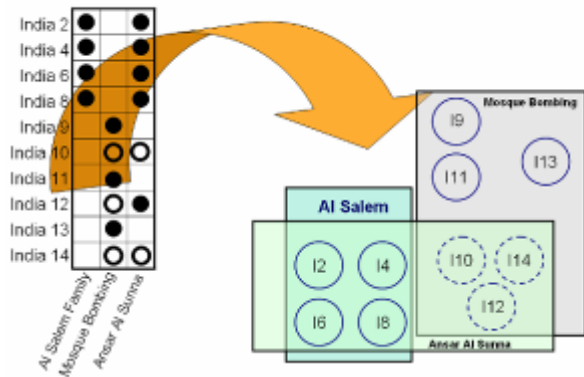


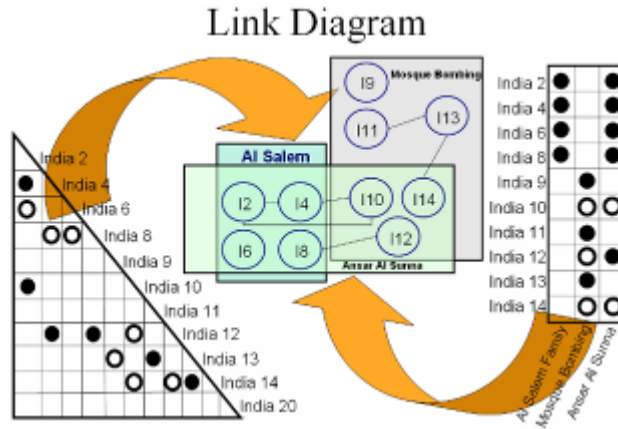


Association Analysis – People



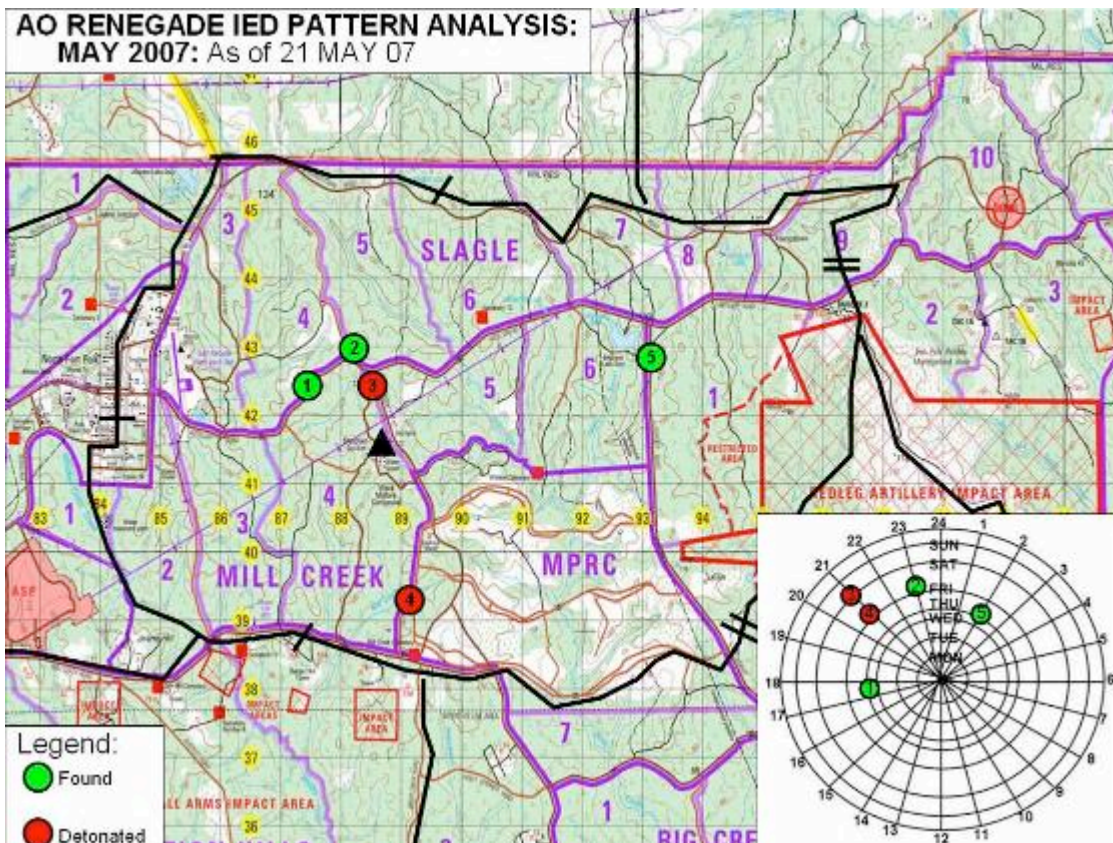
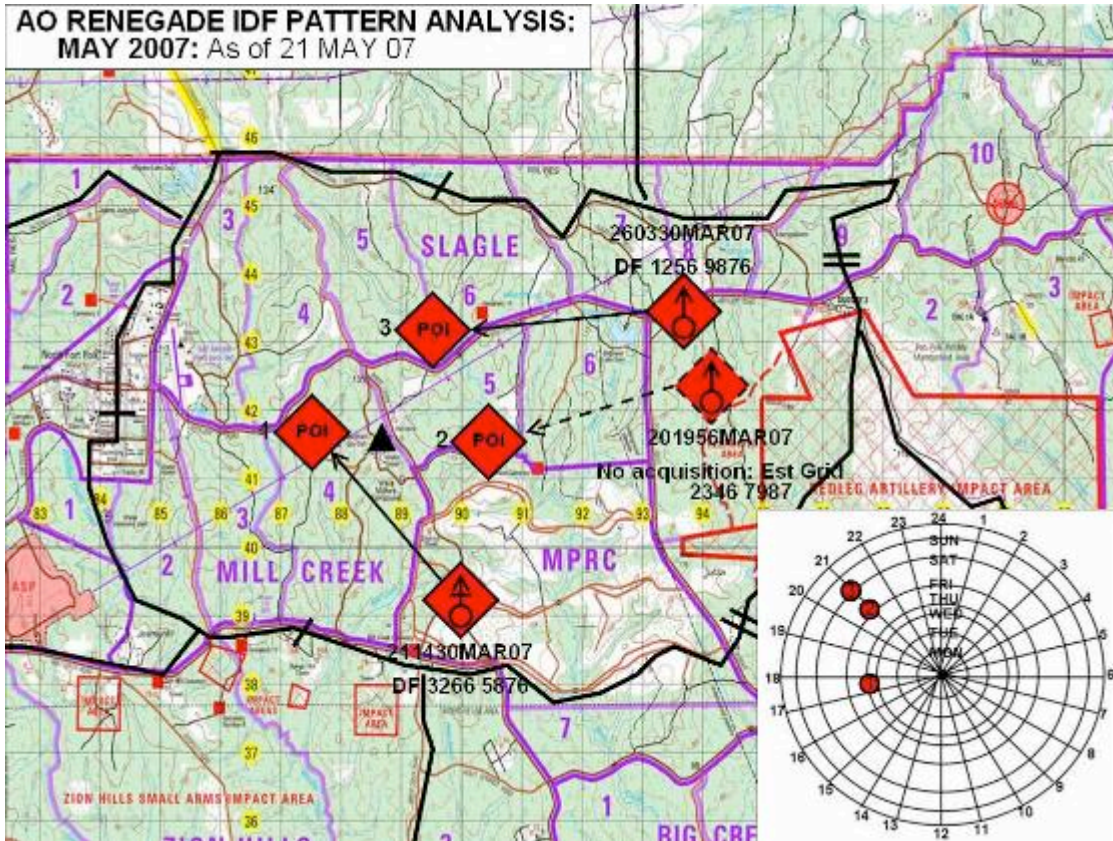
Association Analysis - Events

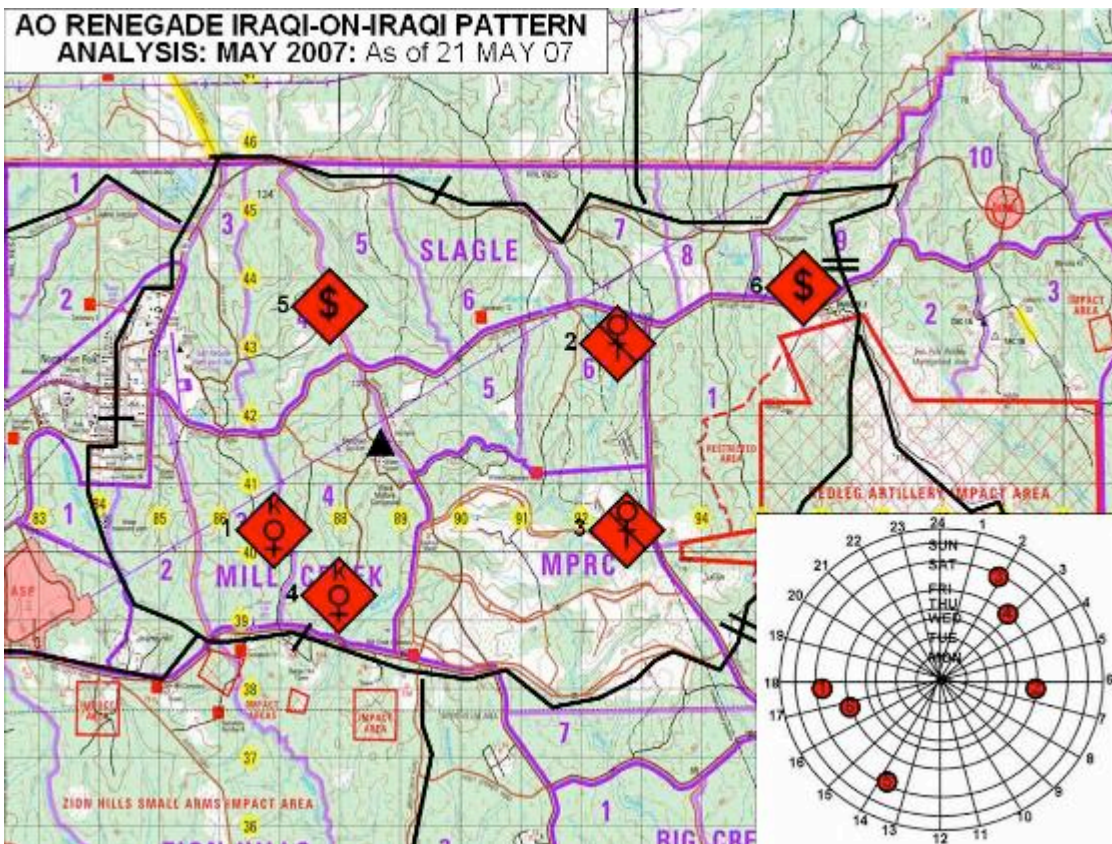
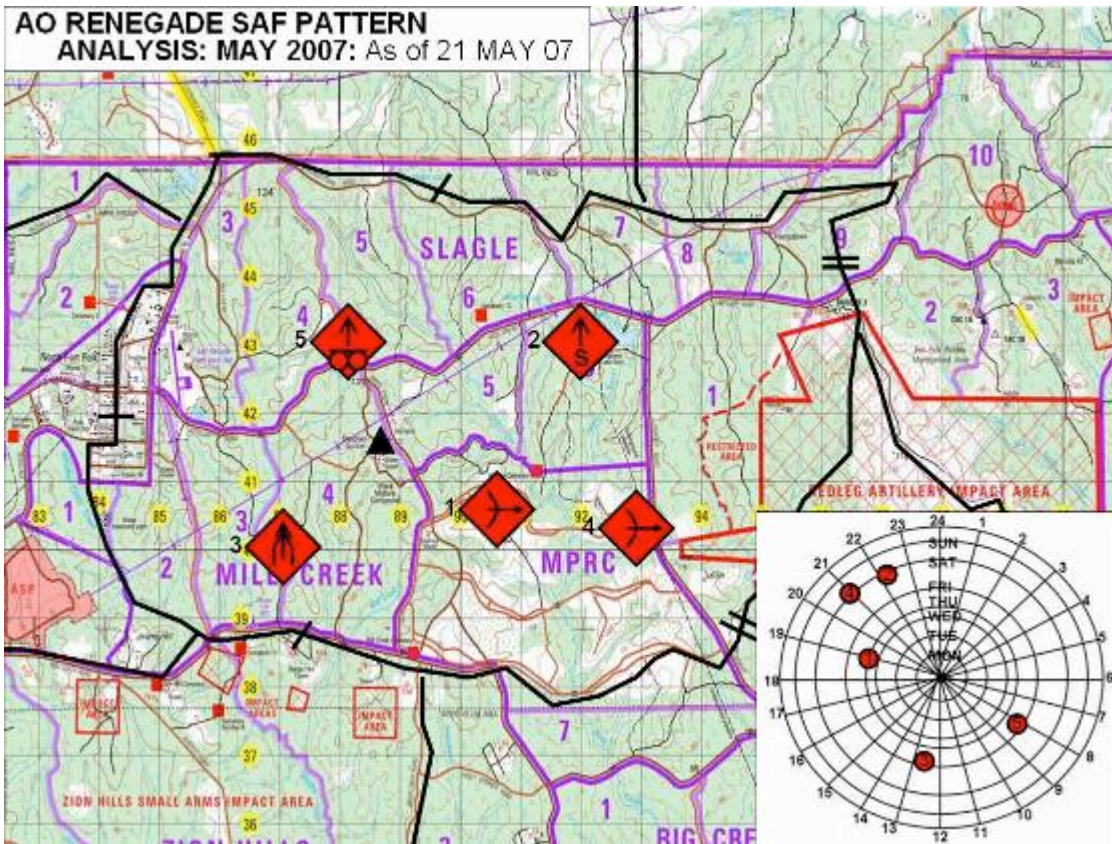




8. Pattern Analysis:

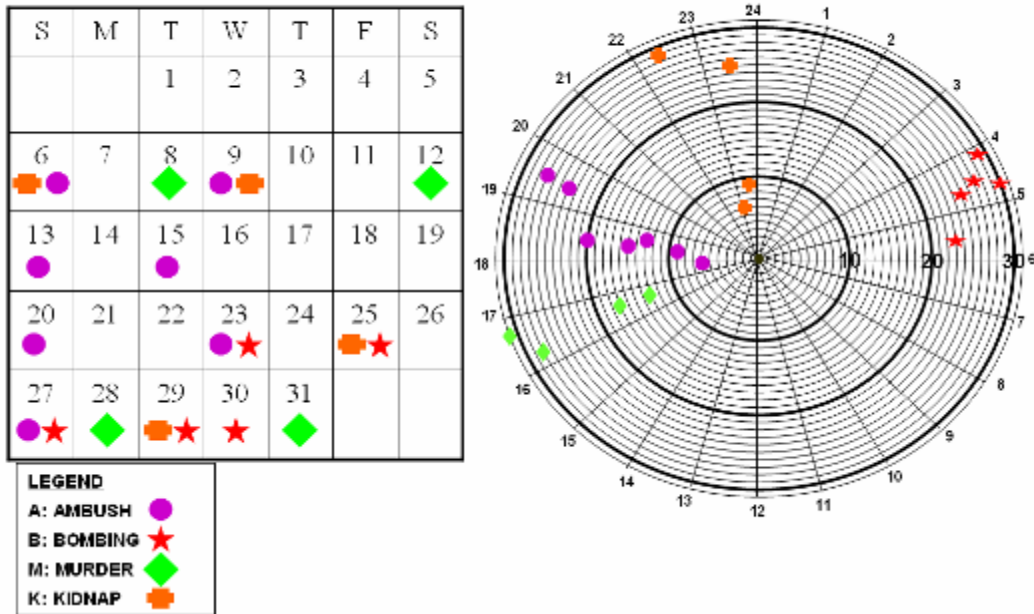
- a. Pattern analysis of attack times and locations will be conducted at the company level
- b. Mission and commander's preference will dictate how pattern analysis is conducted at the company level; this SOP is meant to guide rather than specify exactly what tools are used
- c. Predictive analysis is the end state for effective pattern analysis; specific analysis beyond what is presented in this SOP should be conducted whenever the Company Intel Cell believes that another external factor may be driving enemy patterns (i.e. nightly illumination may influence IED emplacement at a certain location, joint U.S./ISF patrols may draw more small arms fire than pure U.S. patrols, etc.)
- d. Pattern analysis can be conducted with separate time analysis wheels and location analysis maps, or the two can be combined into one product covering one specific form of enemy attack; this type of pattern analysis is represented below:
 - (1) IDF: Tracks acquired points of origin (POO) and points of impact (POI); un-acquired POOs will be estimated when possible and represented in dashed lines
 - (2) IED: Tracks IEDs found and IEDs detonated; IED symbols should be hyperlinked to associated IED reports
 - (3) SAF: Tracks SAF engagements, snipers, drive-by shootings, and short-range rocket fire; SAF symbols should be hyperlinked to associated SAF reports
 - (4) Iraqi-on-Iraqi: Tracks known and suspected insurgent activities against civilians; symbols should be hyperlinked to associated reports





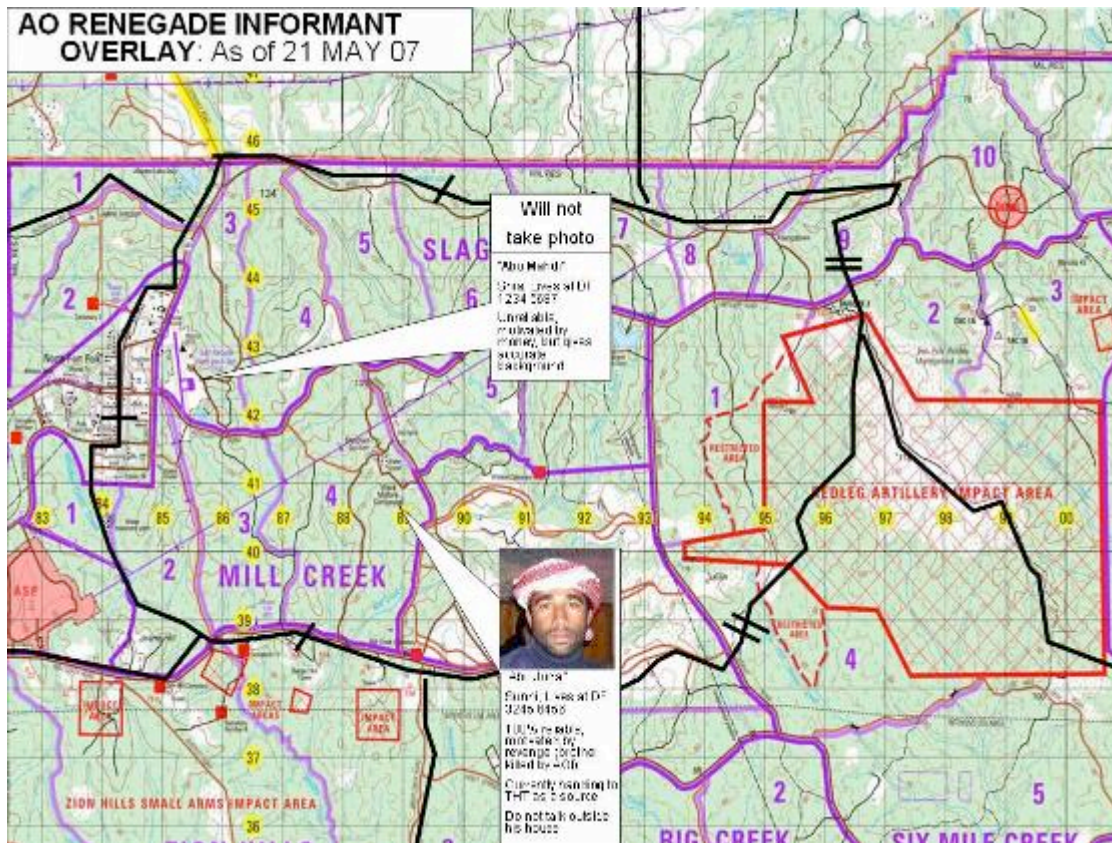
- e. An example of a traditional time/date pattern analysis wheel is presented below; this technique can be used in conjunction with location analysis maps in lieu of using the form-of-attack specific combined pattern analysis overlays presented above:

Pattern Analysis Wheel: May 2007



9. Informant Overlay:

- a. Safeguard informant's real names; use aliases on the tracker and disclose real names only to leaders who you trust to be careful with the information
- b. Pictures can digitally hyperlink to more detailed information
- c. Ensure that all informant meetings are recorded in the Informant Contact Log (see Annex G) and have updated Informant Personal Information Sheets (see Annex F)
- d. The informant overlay must be tightly controlled as public knowledge would likely cause the death of company informants; hard copies of the should be shredded when obsolete and should not go forward on patrols nor be posted anywhere that ISF or interpreters can view



10. Other Intelligence Tools Posted in the Company CP:

- a. Current light and weather data
- b. Current BN CCIR with derived company SIR
- c. Current personnel and vehicle BOLO List
- d. Current SWEAT assessments
- e. Predictive analysis board (predictions both for next 48 hours and for next few weeks posted)
- f. Any relevant products or storyboards from the Battalion S-2

ANNEX C: MISSION TRAINING PLAN FOR COMPANY CP OPERATIONS

Modified from ARTEP 7-10-MTP and ARTEP 17-97F30-MTP

TASKS:

Operate a Company, Battery, or Troop Command Post	Page 1
Conduct Troop Leading Procedures	Page 4
Conduct a Rehearsal	Page 7
Conduct Risk Management	Page 9
Establish Communications	Page 11
Report Tactical Information	Page 13
Conduct Liaison Activities	Page 14

TASK: Operate a Company, Battery, or Troop Command Post

CONDITIONS: The company, battery, or troop is conducting COIN operations independently or as part of a unit of employment or Army forces (ARFOR) or in conjunction with Host Nation forces. The company may be deployed over a wide geographical separation from the BN in an FOB or patrol base. The company headquarters will operate from a fixed location, although the tactical headquarters may deploy into the field. The company may be partnered with Host Nation Army and or Police. The company will be communicating with higher headquarters and subordinate units via a Common Operating Picture. Coalition forces and noncombatants may be present in the operational environment.

TASK STANDARDS: The company operates the CP in accordance with SOP, the order, and or higher commander's guidance. The CP provides communications with higher, subordinate, adjacent, and supporting units; assists the company commander in planning, coordinating, and issuing company OPORDs; and supports continuous operations by the company. The CP maintains situational understanding by receiving, processing, recording, plotting, tracking, and reporting information. The company complies with the ROE.

TASK STEPS AND PERFORMANCE MEASURES	GO	NO-GO
-------------------------------------	----	-------

<p>1. Company leaders gain and or maintain situational understanding using information that is gathered from FORCE XXI Battle Command - Brigade and Below (FBCB2) (if applicable), frequency modulated (FM) communications, maps, intelligence summaries, situation reports (SITREPs), and or other available information sources.</p> <p>2. Establish communications on all available nets:</p> <ol style="list-style-type: none"> a. Higher headquarters command net. b. Higher headquarters fires net or operations and intelligence (OI) net. c. Company command net. d. If equipped, sets or adjusts FBCB2 filters IAW order and SOP. e. If equipped, BFT. f. If equipped, Satellite Communications (SATCOM), HF FM, and AM radio communications. g. If equipped, SIPR connectivity to include VOIP and MIRC Chat. h. If equipped, remote video terminal for tactical unmanned aerial system (UAS). i. If equipped, mortar workstation. <p>3. Initiates information management to assist the company's common operating picture (COP) using digital systems and/or analog methods IAW order and/or SOP. Set up the following tools:</p> <ol style="list-style-type: none"> a. Large AO map with operational graphics and moveable icons b. AI maps c. SIGACT tracker d. Patrol tracker e. Personnel number tracker f. Forward LOGSTAT tracker g. Current Personnel and Vehicle BOLO List h. Tribal Overlay i. Political Overlay j. Key Infrastructure Overlay k. Neighborhood Overlays (if required) l. Religious Overlay m. Enemy SITTEMPs with link diagrams n. Pattern Analysis Overlays o. Informant Overlay p. Intel Cell Predictive Analysis Board (next 48 and next few weeks) q. Current SWEAT Assessments r. Light and Weather Data <p>4. Battle Captain and RTO conduct duties as per SOP and commander's guidance</p> <ol style="list-style-type: none"> a. Establishes CP log to record critical events, reports received, and actions/ locations of higher and adjacent units. b. Develops or confirms responsibilities and procedures for integrating analog units and/or dismounted elements into the digital database. <ol style="list-style-type: none"> (1) Updating locations and status of analog and/or dismounted units/elements to digital elements. (2) Providing locations of key digital elements to analog and/or dismounted units/ elements. (3) Providing key information that was digitally transmitted to analog and/or dismounted units/elements. c. Manages information flow within company and between higher headquarters and/ or adjacent units. <ol style="list-style-type: none"> (1) Creates and disseminates UAS photos to subordinate units and elements. (2) Ensures subordinate units receive reports from higher headquarters, ISR assets, and adjacent units. (3) Maintains friendly situational awareness (Blue SA). NOTE: If digitally equipped, most Blue SA is automatically disseminated to each vehicle equipped to operate on the tactical internet. However, the locations of some friendly elements (e.g., dismounted elements, OPs, or allied vehicles and troops) may not be digitally provided and updated. 		
--	--	--

SUPPORTING INDIVIDUAL TASKS: None

SUPPORTING COLLECTIVE TASKS: Conduct Troop-leading Procedures (Page 4), Conduct a Rehearsal (Page 7), Conduct Risk Management (Page 9), Establish Communications (Page 11), Report Tactical Information (Page 13), Conduct Liaison Activities (Page 14)

TASK: Conduct Troop-leading Procedures

CONDITIONS: The company, battery, or troop is conducting COIN operations independently or as part of a unit of employment or Army forces (ARFOR) or in conjunction with Host Nation forces. The company has received a warning order (WARNO), operation order (OPORD), or fragmentary order (FRAGO) for an upcoming mission. Time is available to conduct troop-leading procedures (TLP). All necessary personnel and equipment is available. The company has communications with higher, adjacent, and subordinate elements. The company has been provided guidance on the ROE. Coalition forces and noncombatants may be present in the operational environment.

TASK STANDARDS: The company conducts troop-leading procedures in accordance with (IAW) the SOP and appropriate field manual. All planning, coordination, preparations, rehearsals, inspections, and orders are been conducted.

TASK STEPS AND PERFORMANCE MEASURES	GO	NO-GO
-------------------------------------	----	-------

<p>1. Company leaders gain and or maintain situational understanding using information that is gathered from FORCE XXI Battle Command - Brigade and Below (FBCB2) (if applicable), frequency modulated (FM) communications, maps, intelligence summaries, situation reports (SITREPs), and or other available information sources.</p> <p>2. Company commander receives an OPORD or FRAGO and issues warning order.</p> <p>a. Company commander confirms and clarifies the new mission.</p> <p>(1) Participates in a confirmation brief to confirm his understanding of the higher commander's intent and his assigned specific tasks.</p> <p>(2) Obtains clarification on aspects of the order from the commander and/or staff.</p> <p>(3) Conducts initial coordination with adjacent and supporting units/elements as required.</p> <p>b. Issues WARNO</p> <p>(1) Company's mission and company commander's time line.</p> <p>(2) Enough information for subordinate elements to start preparation for the mission.</p> <p>(3) Movement instructions, if movement is to be initiated before OPORD issuance.</p> <p>(4) Items not covered in the unit SOP.</p> <p>3. Company commander conducts mission analysis.</p> <p>a. Focuses on determining the company's mission and the amount of available time.</p> <p>b. Begins immediately to analyze the mission briefly using the factors of mission, enemy, terrain and weather, troops, time available, and civil considerations (METT-TC).</p> <p>(1) Uses no more than one third of available planning time for his planning. (Allows subordinates to have two thirds of available planning time for their planning.)</p> <p>(2) Obtains clarification of the higher commander's intent two levels up, specified tasks, and implied tasks, if necessary.</p> <p>(3) Coordinates with adjacent, combat support (CS), and combat service support (CSS) elements, as necessary or appropriate.</p> <p>(4) Builds enemy EVENTEMP to assist in planning</p> <p>(5) Evaluates company status to identify the following as a minimum:</p> <p>(a) Supply levels for Classes I, III, V, VIII, and IX.</p> <p>(b) Operational readiness of vehicles and equipment to include estimated repair times for nonmission capable items.</p> <p>(c) Battery status to include resupply and recharging.</p> <p>(d) Shortages in the company unit manning roster (UMR), or in attached units that adversely affect mission accomplishment.</p> <p>(e) Communications status (FBCB2, satellite communication [SATCOM], FM, and AM).</p> <p>(f) Acceptance of task organization and connectivity within the digital network.</p> <p>(g) Company level of collective and individual training and practical experience in similar and related missions.</p> <p>(h) Current and anticipated physical condition, to include sleep, and morale of soldiers.</p> <p>(i) Additional resources or duty specialties that are required to accomplish the mission.</p> <p>(6) Analyzes civilian factors and the rules of engagement to determine their impact on operations.</p> <p>(a) Understands the civilian environment:</p> <ol style="list-style-type: none"> 1. Political affiliations and grievances against government agencies and NGOs. 2. Ethnicity and factions. 3. Cultural distinctions. 4. Religious beliefs. 5. Attitude toward US forces (friendly, neutral, hostile). 6. Needs of the society. <p>(b) Identifies the urban infrastructure that supports the inhabitants, the government, and the economy and determines its impact on operations.</p> <ol style="list-style-type: none"> 1. Communications to include wireless, radio, television, and/or newspapers. 2. Transportation and distribution to include road network, mass transit, and delivery services that facilitate the movement of supplies, equipment, and people. 3. Energy sources and industry that produce, store, and distribute electricity, coal, 	
--	--

SUPPORTING INDIVIDUAL TASKS: None

SUPPORTING COLLECTIVE TASKS: Conduct a Rehearsal (Page 7), Conduct Risk Management (Page 9)

TASK: Conduct a Rehearsal

CONDITIONS: The company, battery, or troop is conducting COIN operations independently or as part of a unit of employment or Army forces (ARFOR) or in conjunction with Host Nation forces. The company has received a warning order (WARNO) and operation order (OPORD) or fragmentary order (FRAGO) for an upcoming mission. Mission planning and coordination for the mission have been accomplished. Time is available to conduct a rehearsal. All necessary personnel and equipment are available. The company has communications with higher, adjacent, and subordinate elements. The company has been provided guidance on the rules of engagement (ROE). Coalition forces and noncombatants may be present in the operational environment.

TASK STANDARDS: The company conducts a rehearsal prior to the beginning of the upcoming operation in accordance with the order and higher commander's guidance. The rehearsal addresses critical aspects of the operation and provides necessary information for subordinate elements to execute their mission. The company commander reinforces the ROE.

TASK STEPS AND PERFORMANCE MEASURES	GO	NO-GO
-------------------------------------	----	-------

<p>1. Company leaders gain and or maintain situational understanding using information that is gathered from FORCE XXI Battle Command Brigade and Below (FBCB2), frequency modulated (FM) communications, maps, intelligence summaries, situation reports (SITREPs), and other available information sources.</p> <p>2. Company commander plans and prioritizes the rehearsal schedule.</p> <p>a. Selects:</p> <p>(1) Type of rehearsal.</p> <p>(2) Rehearsal technique.</p> <p>(3) Place of rehearsal.</p> <p>(4) Attendees.</p> <p>(5) Enemy course of action (COA) to be portrayed.</p> <p>b. Coordinates liaison officer (LNO) attendance from adjacent units, if required.</p> <p>c. Ensures rehearsal time and location are identified in the company OPORD or WARNO.</p> <p>3. Company commander prepares for rehearsal.</p> <p>a. Identifies and prioritizes key events to be rehearsed.</p> <p>b. Allocates time.</p> <p>c. Confirms friendly and enemy situations.</p> <p>(1) Receives an updated digital report showing the location of forward and adjacent friendly elements, if applicable.</p> <p>(2) Receives an updated enemy situational template for added fratricide prevention and increased force protection, if applicable.</p> <p>(3) Clarifies priority intelligence requirement (PIR) requirements.</p> <p>(4) Confirms any changes to the company team and company task or purpose.</p> <p>(5) Confirms any changes to the scheme of maneuver.</p> <p>d. Reviews:</p> <p>(1) Completeness of task organization.</p> <p>(2) Readiness of personnel and material.</p> <p>(3) Level of preparation for the assigned mission.</p> <p>e. Disseminates digital reports (if applicable), overlays, and other pertinent information to each platoon to keep them abreast of the situation.</p> <p>4. Platoon (subordinate) leaders complete their planning process.</p> <p>5. Company commander or designated representative executes the rehearsal.</p> <p>a. Conducts a formal roll call and ensures necessary equipment is on hand.</p> <p>b. Validates task organization for the mission.</p> <p>c. Rehearses synchronization of combat power from flank, higher, and his own units.</p> <p>d. Synchronizes the timing and contribution of each operating system.</p> <p>e. Keeps the rehearsal within established time constraints.</p> <p>f. Ensures selected events receive appropriate attention.</p> <p>g. Ensures absentees receive changes immediately.</p> <p>h. Bases the execution actions on the enemy COA he selected during the planning process:</p> <p>(1) Portrays his best assessment of the enemy COA.</p> <p>(2) Communicates the enemy commander's:</p> <p>(b) Desired effects.</p> <p>(c) Intended end state.</p> <p>i. Restates any changes, coordination, or required clarification.</p> <p>j. Estimates the time that a FRAGO, codifying the changes, will follow.</p> <p>k. Orients participants to the training aid and the terrain.</p> <p>l. Defines the standard (what will be accepted as satisfactory performance for the rehearsal).</p> <p>m. Visualizes and synchronizes the concept of operations.</p> <p>n. Focuses on the key events and synchronization required to achieve the desired effect on the enemy.</p> <p>o. Considers the enemy's courses of action (COAs).</p> <p>p. Addresses any points in the operation where the execution of branches or sequels is likely to occur.</p> <p>q. Rehearses again, if the standard is not met and time is available.</p>		
---	--	--

SUPPORTING INDIVIDUAL TASKS: None

SUPPORTING COLLECTIVE TASKS: None

TASK: Conduct Risk Management

CONDITIONS: The company, battery, or troop is conducting operations as part of a larger force and has received an operation order (OPORD) or fragmentary order (FRAGO) to conduct a specific mission at the location and time specified. All necessary personnel and equipment are available. The company has communications with higher, adjacent, and subordinate elements. The company has been provided guidance on the rules of engagement (ROE). Coalition forces and noncombatants may be present in the operational environment.

TASK STANDARDS: The company commander conducts risk management in accordance with (IAW) SOP and higher commander's guidance. The company identifies hazards, assesses hazards, develops controls and makes risk decisions, implements controls, and supervises and evaluates controls. The company complies with the ROE.

TASK STEPS AND PERFORMANCE MEASURES	GO	NO-GO
-------------------------------------	----	-------

<p>1. Company leaders gain and or maintain situational understanding using information that is gathered from FORCE XXI Battle Command Brigade and Below (FBCB2), frequency modulated (FM) communications, maps, intelligence summaries, situation reports (SITREPs), and other available information sources.</p> <p>2. Company commander receives an OPORD or FRAGO and issues warning order (WARNO) to the company using FBCB2, FM, or other tactical means.</p> <p>3. Commander plans using troop leading procedures.</p> <p>a. Begins immediately to analyze the mission briefly using the factors of mission, enemy, terrain and weather, troops, time available, and civil considerations (METT-TC).</p> <p>4. Company commander identifies tactical and accidental risks.</p> <p>a. Ensures mission is executed in the safest possible environment, within mission constraints.</p> <p>b. Identifies the hazards associated with all aspects and phases of the mission.</p> <p>(1) Integrate as a part of the tactical planning process.</p> <p>c. Identifies the benefits of safety measures to the unit's mission versus the potential cost of risk or safety hazards paying particular attention to METTTC factors.</p> <p>d. Conducts continuous assessment during the operation for risk reduction.</p> <p>5. Company commander assess identified risk or safety hazards.</p> <p>a. Determines risk that can be eliminated or avoided.</p> <p>b. Assess the severity of hazards that cannot be eliminated or avoided.</p> <p>c. Compares identified risk to the higher commander's acceptable risk level based on stated mission objectives.</p> <p>d. Describes operations in terms of its risk level (extremely high, high, medium, low) based upon the factors of METT-TC.</p> <p>e. Computes overall risk status.</p> <p>f. Identifies aspects of the operation that may be affected by the primary causes of fratricide.</p> <p>(1) Failures in the direct and indirect fire control plan.</p> <p>(2) Land navigation failures.</p> <p>(3) Failures in combat identification.</p> <p>(4) Inadequate control measures.</p> <p>(5) Failures in reporting and communications.</p> <p>(6) Weapons control status.</p> <p>(7) Battlefield hazards.</p> <p>(8) Adjacent units.</p> <p>6. Commander develops controls and makes risk decisions to eliminate or reduce risk and safety hazards.</p> <p>Note: Only the commander can make final risk decisions. He alone decides if controls are sufficient and acceptable and whether to accept the resulting residual risk.</p> <p>a. Selects course of action (COA) that achieves the commander's intent and minimizes the risk.</p> <p>b. Develops procedures that reduce risk.</p> <p>c. Develops controls that specify who, what, where, when, why, and how each control will be used.</p> <p>d. Integrates controls into rehearsals and mission executions.</p> <p>7. Company personnel implements risk control procedures.</p> <p>8. Commander supervises and evaluates risk management controls.</p> <p>a. Supervises mission rehearsals and execution to ensure combat safety standards are maintained.</p> <p>b. Evaluates the effectiveness of controls and adjust as necessary.</p>		
--	--	--

SUPPORTING INDIVIDUAL TASKS: None

SUPPORTING COLLECTIVE TASKS: None

TASK: Establish Communications

CONDITIONS: The company, battery, or troop is conducting COIN operations independently or as part of a unit of employment or Army forces (ARFOR) or in conjunction with Host Nation forces. The company may be deployed over a wide geographical separation from the BN in an FOB or patrol base. The company headquarters will operate from a fixed location, although the tactical headquarters may deploy into the field. The company may be partnered with Host Nation Army and or Police. The company will be communicating with higher headquarters and subordinate units via a Common Operating Picture. Coalition forces and noncombatants may be present in the operational environment. All necessary personnel and equipment are available. The signal annex to the operation order (OPORD) is available.

TASK STANDARDS: The company establishes communications in accordance with (IAW) the SOP, order and higher commander's guidance. The company prepares communication systems for operation. The company establishes and enters appropriate communication nets. The company maintains communications and communications security.

TASK STEPS AND PERFORMANCE MEASURES	GO	NO-GO
-------------------------------------	----	-------

Note: Commanders, of digitized units, should NOT rely on digital communications alone. Digitization does NOT eliminate the requirement for maps and frequency modulation (FM) communications. The decision to use FM versus FBCB2 depends on the situation and standing operating procedures (SOP).

1. Company leaders gain and or maintain situational understanding using information that is gathered from FORCE XXI Battle Command Brigade and Below (FBCB2), frequency modulated (FM) communications, maps, intelligence summaries, situation reports (SITREPs), and other available information sources.
2. Company commander and or first sergeant locate radio stations (primary and alternate) some distance from the company headquarters or command post.
 - a. Allow for effective use of terrain in an electronic warfare environment.
 - b. Avoid frequency interference from power lines and other friendly sources.
 - c. Provide physical security from attack.
 - d. Provide the best possible cover and concealment consistent with reliable transmission and reception of required stations.
3. Company prepares the communication systems for operation.
 - a. Ensures that digital equipment is initialized and operating IAW SOP and applicable manuals.
 - b. Installs required antenna.
 - c. Sets assigned frequency(s).
 - d. Makes required settings.
 - e. Programs equipment for secure operations using key list or appropriate keying devices, if applicable.
 - f. Checks all system components for operational abilities.
 - g. Provides security for communications security (COMSEC) items.
4. Company operates the company net control station (NCS) using FBCB2, wire, or radio.
 - a. Opens analog and digital nets in accordance with (IAW) current Signal Operating Instructions (SOI)/Signal Supplemental Instructions (SSI).
 - b. Challenges all analog and digital stations in net as required by the SOI and or SSI.
 - c. Controls entry and departure of all stations.
 - d. Monitors the net for operability and connectivity of digital devices, if applicable.
 - e. Reports loss and or operating difficulties of any analog or digital station to the chain of command and higher HQ communications element.
 - f. Enforces station and net restrictions.
 - g. Monitors the net to detect errors in operating procedures.
 - h. Corrects all errors in net operating procedures.
 - i. Enforces station listening silence as prescribed by or commander's directive.
 - j. Completes transition to extend range of radio station within 15 minutes, if required.
 - k. Remotes radio station at least one kilometer, if required.
 - l. Directs change to alternate frequency when compromise of primary frequency is suspected.
 - m. Closes net IAW the SOI/SSI.
5. Company enters higher headquarters and fire support nets as required.
6. Company transmits and receives messages over FBCB2 and radio nets using the correct format and procedures.
 - a. Processes messages by precedence, date/time group, and IAW the tactical standing operating instructions (TSOP).
 - b. Processes incoming messages without errors.
 - c. Forwards incoming messages to appropriate element/section.
 - d. Check outgoing messages for completeness and readability.
 - e. Employ approved radiotelephone procedures.
 - f. Transmit messages IAW precedence, correct format, and prescribed text.
 - g. Employ approved codes and brevity lists when transmitting the names of persons, places, and sensitive information.

SUPPORTING INDIVIDUAL TASKS: Communicate on a Tactical Radio (STP 21-II-MQS), Determine Call Signs, Frequencies, and Item Numbers (STP 21-II-MQS), Use an Automated Signal Operation Instruction (STP 21-24-SMCT)

SUPPORTING COLLECTIVE TASKS: None

TASK: Report Tactical Information

CONDITIONS: The company, battery, or troop is conducting COIN operations independently or as part of a unit of employment or Army forces (ARFOR) or in conjunction with Host Nation forces. The company is required to report tactical information, such as priority intelligence requirements (PIR) or company status. All necessary personnel and equipment are available. The company has communications with higher, adjacent, and subordinate elements. Coalition forces and noncombatants may be present in the operational environment.

TASK STANDARDS: The company reports tactical information in accordance with (IAW) SOP, the order, and higher commander's guidance. The company reports tactical information using secure means and the proper format.

TASK STEPS AND PERFORMANCE MEASURES	GO	NO-GO
1. Company leaders gain and or maintain situational understanding using information that is gathered from FORCE XXI Battle Command - Brigade and Below (FBCB2) (if applicable), frequency modulated (FM) communications, maps, intelligence summaries, situation reports (SITREPs), and or other available information sources. 2. Initial reporting within 15 min. (CCIR.) Complete or provide more detailed reporting in 2 hrs. 3. Company commander or designated representative submits digital reports. a. Uses correct preformatted standard reports. 4. Company commander submits reports using FM or other tactical means. a. Consolidates and submits spot reports to higher. b. Reports using the most secure means available. c. Submits a situation report (SITREP) or other command required report in accordance with (IAW) the operation order (OPORD), the SOP, guidance from higher. e. Forwards reports using no more than two transmissions. 5. Company updates reports as the situation changes.		

SUPPORTING INDIVIDUAL TASKS: None

SUPPORTING COLLECTIVE TASKS: Establish Communications

TASK: Conduct Liaison Activities

CONDITIONS: The company, battery, or troop is conducting COIN operations independently or as part of a unit of employment or Army forces (ARFOR) or in conjunction with Host Nation forces. During tactical operations the company is directed to conduct liaison within its area of operations (AO). Information exchange, coordination, and/or negotiation is required with military, government organizations, nongovernmental organizations (NGOs), and other civilian factions within the AO. The unit has digital connectivity with the higher headquarters via Force XXI Battle Command Brigade and Below (FBCB2). The international media are also present in the area. ROE have been published. Interpreters are available and a civil affairs (CA) element may be attached or operating within the company's AO. Additional maneuver, combat support (CS), and/or combat service support (CSS) assets may be available to the company.

TASK STANDARDS: The commander determined the liaison requirements within his AO to ensure mutual understanding and to promote the process of conciliation. Liaison was conducted at the lowest level possible and did not exceed the applicable level of authority. The commander tasked subordinate leaders to establish and maintain liaison and personally conducted liaison when the situation warranted his attention. Dispute resolutions were followed by scheduled preventive actions and follow-up liaison. The command post (CP) maintained situational awareness and contact with liaison elements by monitoring FBCB2 displays and/or FM communications to receive, assess, and report information to the commander, subordinate elements, adjacent units, and/or the higher headquarters. Information and reports were transmitted to all elements using the communications systems that allowed the timeliest decisions by the commander and his higher headquarters. All operations complied with the ROE.

TASK STEPS AND PERFORMANCE MEASURES	GO	NO-GO
-------------------------------------	----	-------

<p>1. Commander determines liaison objectives and requirements that may include but are not limited to—</p> <ul style="list-style-type: none"> a. Coordinates with higher-level intelligence, surveillance, and reconnaissance (ISR) sources and local military contacts to obtain regional information. b. Identifies civilian liaison requirements through coordination with civilian authorities, religious leaders, ethnic groups, factions, and NGOs operating within the AO. c. Identifies information required from other military organizations, governmental agencies, and NGOs. d. Identifies information required by other military organizations, governmental agencies, and NGOs. e. Coordinates with regional civilian and law enforcement officials to obtain information on paramilitary forces, belligerent factions, and/or criminal organizations operating within the AO. f. (D) Assesses the civilian situation to include as applicable— <ul style="list-style-type: none"> (1) Locations of government and NGO headquarters. (2) Composition and dispositions of regional (state) and local military and/or law enforcement organizations. (3) After-action review (AAR) documentation from previous liaison with government, NGOs, and military and/or law enforcement organizations. (4) Factions, key leaders, locations, compositions, and dispositions of known friendly, neutral, and belligerents. (5) Description of uniforms, vehicles, insignia, markings, and equipment to include weapons. (6) Current locations of weapons holding areas, staging areas, and/or encampments. (7) Locations of police stations, food distribution points, and power generation/transformer facilities. (8) Locations of media outlets and communications networks. (9) Influence of noncombatants on operations (both friendly and enemy/threat). <ul style="list-style-type: none"> (a) Political affiliations and grievances. (b) Ethnicity, religious beliefs, and cultural distinctions. (c) Known belligerents and other organized factions. (d) Living conditions that affect and separate factions. (e) Attitude toward US forces and their recent activities. g. Assesses impact of terrain to include— <ul style="list-style-type: none"> (1) Effects on fields of fire and stand-off ranges of weapon systems. (2) Effects on use of tactical unmanned aerial vehicles (UAS) and other aviation assets for reconnaissance, transportation, resupply, and fire support. (3) Use of rooftops for observation, ambushes, and other actions against forces. (4) Basements and subterranean systems for cover, concealment, infiltration, and sustainment activities. (5) General composition of the buildings and road surfaces. h. Develops liaison requirements and contact frequency with local officials, agencies, and/or organizations within the AO. i. Establishes times and locations for initial liaison contacts with local officials, agencies, and/or organizations. <p>2. Commander issues order addressing the following:</p> <ul style="list-style-type: none"> a. Orientation to include, as necessary, key installations and facilities; transportation network; subterranean avenues, entrances, and exits; checkpoints and/or roadblocks; and the time/distance factors for reaction times. b. Civilian situation to include as applicable— <ul style="list-style-type: none"> (1) Locations of government and NGO headquarters. (2) Composition and dispositions of regional (state) and local military and/or law enforcement organizations. (3) AAR documentation from previous liaison with government, NGOs, and military and/or law enforcement organizations. (4) Factions, key leaders, locations, compositions, and dispositions of known friendly, neutrals, and belligerents. <ul style="list-style-type: none"> (a) Recent trends in local public opinion. (b) Intensity levels of past and/or current disturbances. 	
--	--

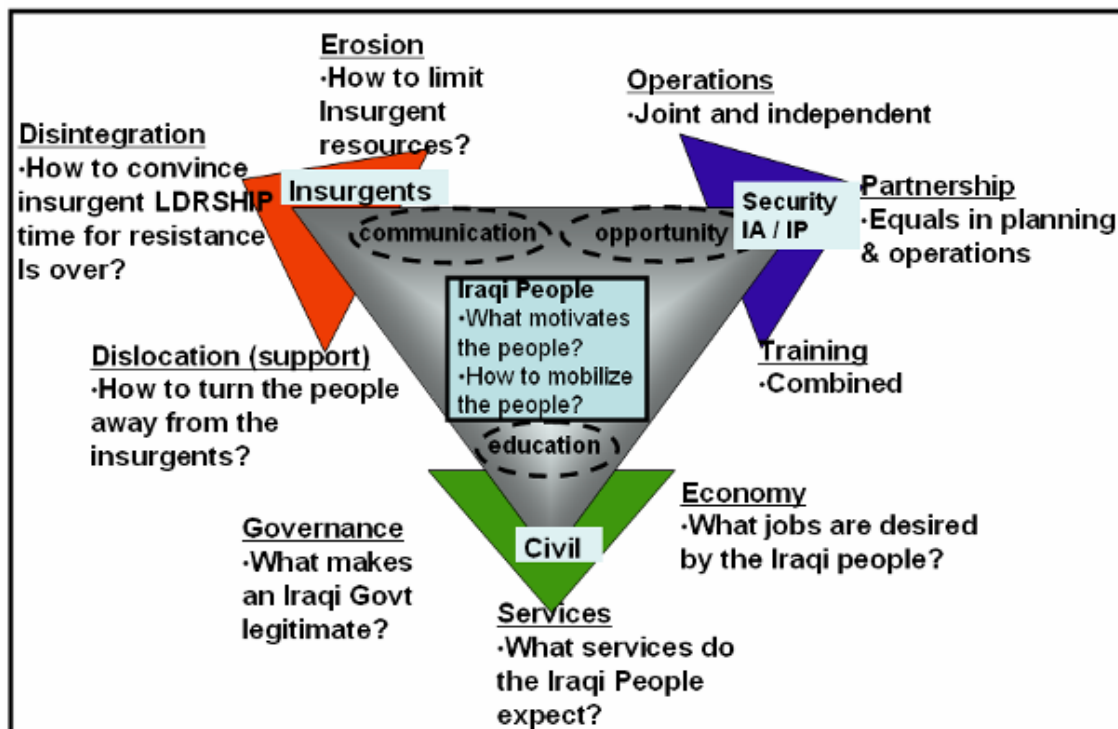
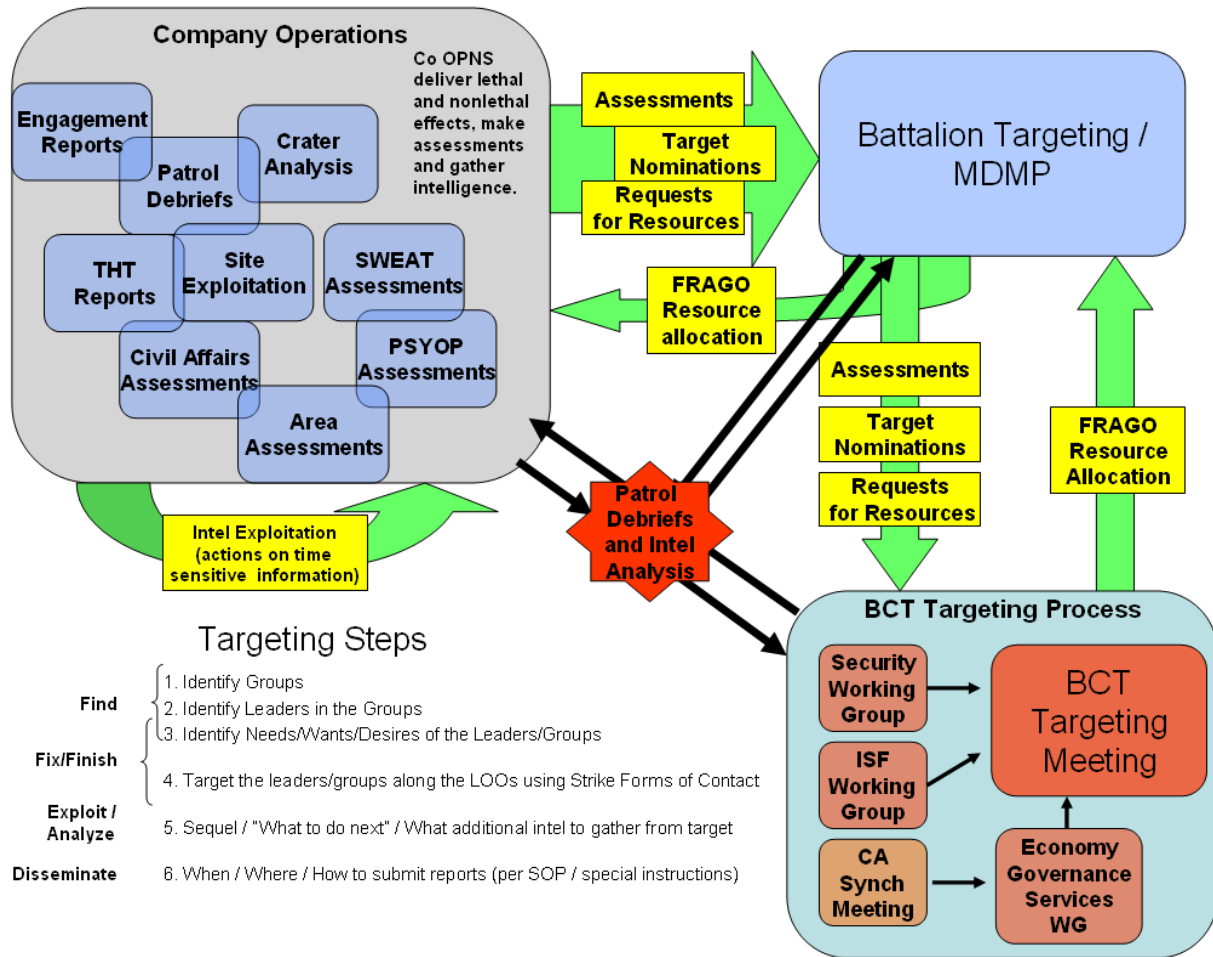
SUPPORTING INDIVIDUAL TASKS: None

SUPPORTING COLLECTIVE TASKS: None

ANNEX D: BCT TARGETING METHODOLOGY

1. All company operations are part of the BCT overall targeting process. All operations achieve one or more of the following:
 - Deliver lethal and/or nonlethal effects
 - Make assessments
 - Gather intelligence
2. The BCT targeting process begins with assessments and intelligence gathering at the company, platoon, and squad level. Intelligence and assessments are fed into the process through reporting to battalion headquarters and through systems such as TIGR, Access PRO, or other database software. Companies also conduct their own analysis of information and intelligence to nominate targets to battalion or request assets to support the company engagement of a target.
3. Battalions will analyze assessments of all their companies as well as the target nominations and requests for resources. If the battalion has assets available to allocate to company targets, the battalion issues a FRAGO allocating the resources to support company targeting. If the battalion does not have the resources, the nomination/request is forwarded to BCT along with assessments of the battalion area.
4. The BCT staff uses information gathered by the companies to feed various working groups in order to recommend to the BCT commander methods to synchronize efforts across the BCT and to allocate resources.
5. The BCT targeting method is based on a seven day cycle, but information provided by a company operation can enter the process at any time during the cycle. The result of the BCT staff targeting meeting process is a decision by the BCT commander approving targets and allocating resources.
6. The BCT will then issue a FRAGO allocating resources and tasking battalions to accomplish tasks to deliver lethal or nonlethal effects on a target, as well as gather intelligence and refine assessments.
7. Battalions then mirror the BCT staff actions by allocating resources to the companies to accomplish tasks to deliver lethal or nonlethal effects on a target, as well as gather intelligence and refine assessments.
8. Targets are engaged using the Strike Forms of Contact:

Direct Contact (he can feel our presence) Direct Fire Indirect Fire Detain Patrol Print Media TV/Radio Face to face Telephone CMO Project	Indirect Contact (he does not feel our presence) UAS - visual SIGINT HUMINT ELINT IMINT MASINT (JSTARS) PSYOP / Rumor
--	--
9. For time sensitive targets, companies must quickly exploit intelligence at their level, pursuing targets until achieving the desired effect (influence/capture/kill).
10. This cycle is continuous throughout all operations with assessments and intelligence gathering beginning at the company and Strike Forms of Contact executed by the company.



ANNEX E: SAMPLE PRE-FORMATTED PATROL ORDER

Task Organization: *How your element is configured for the mission, attachments*

Terrain and Weather: *Map and imagery analysis- how terrain and weather affect the mission*

1. Situation

a. Enemy:
1) **Recent attacks in mission AO**

2) **Enemy most likely course of action**

b. Friendly:
1) **Higher unit mission and intent:** *The why of the operation and what the PL/CO wants done*

2) **Friendly units in AO:** *Include identification, markings, and any link up procedures*

3) **Reserve:** *Unit, callsign, reaction time*

4) **Fire support / Air support Available:** *Unit, callsign, reaction time*

5) **Recent friendly patrols in mission AO:** *Any SIGACTs from recent missions in the AO*

2. Mission: *Who, What When, Where, Why*

3. Execution:

Concept of the Operation: *Task and purpose for all subordinate unit and desired end state*

1. Maneuver: *Detailed scheme of maneuver*

1. Fires / CAS: *How you plan to use indirect, fixed, and rotary wing aircraft in your maneuver, and how you going to call for them, communicate, and mark targets*

1. Actions on Contact:

- IED mounted/dismounted

- Ambush mounted/dismounted, near/far, with IED/without IED

- Sniper fire mounted/dismounted

- Indirect fire mounted/dismounted

- VBIED/suicide bomber mounted/dismounted

- Road Block

- Civil disturbance

- Vehicle Rollover/Helicopter Crash

- Other mission specific scenarios

4. Coordinating Instructions:

1) Time Line:

2) Movement Formation, Speed, Intervals, Light Status on Vehicles:

3) Routes: *Primary, alternate, checkpoints, known danger areas*

4) Actions at Danger Areas:

- Bridges:
- Overpasses:
- Prior IED locations:
- Canalized terrain:
- Traffic Circle:
- Traffic Jam:
- Canals/Rivers:
- Other Danger Areas:

5) Actions at Halts:

6) Vehicle Recovery/React to Breakdown/React to Submerged Vehicle:

7) React to Break in Contact:

8) Vehicle/Helicopter Load Plan

9) Security/Fields of Fire:

10) Fire Control Measures/Marking Plan:

11) CCIR:

- **PIR:** *What information are you trying to learn?*

- **FFIR:** *What info needs to be reported to higher?*

12) IO Plan: *What messages are you communicating to the population?*

13) Detainee Handling/Evidence Collection Plan/BOLO List:

14) Rehearsal Plan:

15) PCI/PCC Plan:

16) ROE: *Reread ROE card*

17) Risks and Mitigation Factors: *Any risks not previously covered*

4. Service and Support:

<p>a. Supplies required:</p> <ul style="list-style-type: none">- Class 1 (Food/Water):- Class 3 (Fuel):- Class 4 (Engineer materials, TCP equipment):- Class 5 (Ammo):- Class 8 (Medical supplies):- Class 9 (Repair/Recovery equipment):- Other special equipment:
<p>b. CASEVAC Plan:</p>

5. Command and Signal:

<p>a. Command: <i>Location of leaders and succession of command</i></p>
<p>b. Signal:</p> <ul style="list-style-type: none">1) Call signs and frequencies:2) Challenge and password, running passwords3) Commo contingencies

ANNEX F: BCT INFORMANT PERSONAL INFORMATION SHEET FORMAT

Contact #: _____ (assigned by BN S2)
Type of Contact: _____ (walk-in, patrol, casual, community, liaison)

This sheet is used to record the biographic and other details of individuals met during passive HUMINT collection operations. These include walk-ins, patrol collection, casual, community & liaison contacts.

Biographic Details

- A. What is the contacts' full name?
 - First Name:
 - Middle Name:
 - Last Name:
 - Tribal/clan Name:
 - Nickname:
- B. What is the contacts' date of birth? (YYYYMMDD)
- C. What is the contacts' place of birth? (neighborhood, city)
- D. Where does the contact live now? (address, neighborhood, city)

Placement/Access

- E. Where did the contact obtain the information he/she provided?
- F. When did you obtain this information?

Motivation

- G. Why did the contact come forward to give information?
- H. Has the contact provided information to Coalition Forces in the past? (other than this unit)
Yes/No (If yes, to whom and what was the information.)
- I. Is the contact currently providing information to other members of Coalition Forces? (other than this unit) (IF YES, STOP AND CONTACT THT FOR FURTHER GUIDANCE):
- J. Is the contact willing to pass information to others within the coalition?
- K. What are the contact's feelings about the Coalition Forces operating within Iraq?

Security

- L. Who else knows the information being reported?
- M. Who else knows the contact is talking with us?

Contact/Recontact Details

- N. Is the contact able to contact/meet with us again? (where/when)

Meeting History (refer to previous screening sheets & contact logs)

O. When has the contact been met? (from first meeting onwards: include Date, Time, Location, Collector Details – including linguist):

Information Provided (refer to previous screening sheets & contact logs)

P. What information has the contact provided? (include date, general details and SPOT or other report numbers if written):

Inspection by Brigade S2/Review by THT

Q. When was this sheet inspected by the Brigade S2X staff or reviewed by a HCT member? (include Date, HCT member details, action taken):

Sheet Compiled/Information Updated

R. Who compiled this sheet and updated the details? (include Date, member details):

Physical Description

- S. What is the contact's physical description? ("A to I" acronym)
- A: Age/Sex (estimate within 5 years, eg 25-30 years old male)
 - B: Build (include estimate of weight within 10 pounds, eg 150-160lbs)
 - C: Complexion (Ethnic Group/Skin Complexion)
 - D: Dress (from head to feet: headwear, shirt, pants, shoes, plus accessories)
 - E: Elevation (Height) (estimate within 2 inches)
 - F: Face (include eye color, facial hair)
 - G: Gait
 - H: Hair (color, length, style)
 - I: Interesting (Distinguishing) Features (jewellery, language, scars, marks, tattoos)

Attach photo (if available)

Handover/Termination

T. When was the contact handed over to a HCT, or terminated as a source of information?

Annex G (Informant Contact Log Format) to 2 BCT, 101st ABN DIV (AASLT), Company, Battery, and Troop CP Operations SOP

--	--	--	--	--	--	--	--

Type of contact: W = walk-in; P = patrol; CS = casual (irregular); CO = community (regular); L = liaison (official)

This log is designed to be used by companies and platoons to record the details of walk-ins and contacts who provide information to coalition forces. These details should be passed to the BN S2 staff, where they will be registered and given a contact number. Check the log periodically to see if individuals are coming forward on a regular basis. The BN S2 staff will inspect the log periodically. The supporting HCT may review the log periodically to identify possible

ANNEX H: BCT MOSQUE MONITORING REPORT FORMAT

UNIT	DATE	CITY AND GRID	MOSQUE	Religion	IMAM	MESSAGE	SUMMARY	HISTORY	ACTION TAKEN	NOTES
Unit designation of element that conducted monitoring mission	Date mosque was monitored	Name of city and 8 - 10 digit grid of mosque	Name of mosque	Shia, Sunni, Other	Name of Imam	Positive, Neutral, or Negative. Fill box Green, Yellow, or Red accordingly	Summary of sermon	Dates of previous monitoring missions and message	Reported to BN, BDE, etc.	Enter any other notes of interest
A 1-502	28-Mar-07	Mahmudiyah MB 1234 5678	Al Hamiya	Shia	Ali al Husseini	Neutral	The imam referenced scripture from the Koran encouraging attendees to faithfully practice the five pillars of Islam. No mentions of Coalition forces or ISF.	21Mar07 - Positive 14Mar07 - Neutral 07Mar07 - Neutral	Reported to BDE	BCT HVI #3 PID entering mosque for sermon

ANNEX I: BCT 9-LINE MEDEVAC FORMAT

2BCT MEDEVAC 9-Line

Date seq# type
 IZ 1CD M _____

Line 1	LOCATION: LOCATION AND GRID	
Line 2	CALL SIGN: RADIO FREQ. CALL SIGN & SUFFIX	
Line 3	PRECEDENCE: A-URGENT/B-URGENT SURGICAL/C- PRIORITY/ D-ROUTINE/E-CONVINCE	
Line 4	SPECIAL EQUIPMENT: A-NONE/B-HOIST/C-EXTRACTION EQUIP/D- VENILATOR	
Line 5	NUMBER OF PATIENTS: (BY TYPE) L- LITTER/A-AMBULATORY	
Line 6	WAR: SECURITY OF PZ PEACE: NUMBER/TYPE OF WOUND/ILLNESS	
Line 7	MARKING OF PZ: A-PANEL/B-PYRO/C-SMOKE/D-NONE/E- OTHER	
Line 8	NATIONALITY/STATUS: A-US MIL/B-US CIV/C-NON US MIL/D-NON US CIV/E-EPW	
Line 9	WAR: NBC CONTAMINATION –N/B/C PEACE: TERRAIN DESCRIPTION	

-----TOC USE ONLY-----

TIME MED CALLED: _____ MED POC NAME: _____
 TIME 1088 CALLED: _____ 1088 POC NAME: _____
 SP TO LOCATION: _____ WHEELS UP: _____
 WHEELS DOWN: _____

ANNEX J: BCT UXO/IED REPORT FORMAT

2BCT IED 9-Line

Date seq# type
IZ 1CD M _____

Line 1	DATE -Time Group: DTG item was discovered	
Line 2	Activity and location (grid of IED) Minimum of an 8 digit grid. On the road, off the road, in the ditch, etc...	
Line 3	Contact Method: Radio frequency, call sign, point of contact (POC), and telephone number.	
Line 4	Type of Ordnance: Dropped, projected, placed, or thrown. If available, supply the subgroup. Give the number of items, if more than one.	
Line 5	NBC Contamination: Be as specific as possible	
Line 6	Resources Threatened: Report any equipment, facilities, or other assets that are threatened	
Line 7	Impact on Mission: Provide a short description of your current tactical situation and how the presence of the UXO affects your status.	
Line 8	Protective Measures: Describe any measures you have taken to protect personnel and equipment.	
Line 9	Recommended Priority: Make a recommendation as to the priority for response by EOD technicians	

-----ABE USE ONLY-----

TIME EOD CALLED: _____ EOD POC NAME: _____
 TIME 1088 CALLED: _____ 1088 POC NAME: _____
 SP TO LOCATION: _____ END OF MISSION TIME: _____
 RP TO LOCATION: _____

ANNEX K: SAMPLE PATROL PASS FORMAT

Unit:		Number of PAX:		Number of Vehicles:		Destination:		
Departure Time (DTG):		Estimated Time of Arrival:				Estimated time of Return:		
Mission Type:								
Patrol Leader:					Call Sign/ Frequency / BFT ID:			
Name		BRN		Bumper #	Name		BRN	Bumper #

Vehicle type	Bumper #	Crew Served Weapons	Crew System	Additional IED Defeat Equipment

ANNEX L: ARABIC NAME, TITLE, AND TRIBE TRANSLITERATION STANDARDS

ARABIC	USE THIS SPELLING	ARABIC	USE THIS SPELLING
ابار	ABAR	اجود	AJWAD
ابتسام	IBTISAM	اجيد	AJID
ابراهيم	IBRAHIM	احد	AHD
ابرام	IBRAM	احسان	IHSAN
ابرو	ABRU	احسان الدين	IHSAN-AL-DIN
ابكار	ABKAR	احسان الله	IHSANALLAH
ابن عمران	IBN-'UMRAN	احلام	AHLAM
ابو ال عزم	ABU-AL-'IZZ	احمد	AHMAD
ابو النون	ABU-AL-NUN	احمد الدين	AHMAD-AL-DIN
ابو الهني	ABU-AL-HANI	احمد الله	AHMADALLAH
ابو الهيل	ABU-AL-HAYL	احميد	AHMID
ابو بكر	ABU-BAKR	اخضر	AKHDAR
ابو تمر	ABU-TAMUR	اخليف	AKHLIF
ابو حسن	ABU-HASNAH	اخير	AKHIR
ابو ريشة	ABU-RISHAH	ادبيس	ADBAYS
ابو زوه	ABU-ZAWAH	ادريس	IDRIS
ابو سوده	ABU-SWDAH	ادغيم	ADGHAYM
ابو شخيرة	ABU-SHAKHIRAH	ادل يم ي	ADLAYMI
ابو شماع	ABU-SHAMMA'	ادم	ADAM
ابو صخير	ABU-SUKHAYIR	ادهم	ADHAM
ابو عطره	ABU-'ATRAH	ادور	EDWARD
ابو علي	ABU-'ALI	اديب	ADIB
ابو كطفه	ABU-KITFAH	ادي د	ADYAD
ابو لعيبه	ABU-LU'AYBAH	اديل	ADIL
ابير	ABIR	ارحيمه	ARHAYMAH
ابيل	ABIL	ارسلان	ARSALAN
اثير	ATHIR	ارشاد	IRSHAD
اثيل	ATHIL	ارشاد	ARSHAD
اجبر	AJBAR	ارشيد	ARSHID
اجدع	AJDA'	ارقم	ARQM
ARABIC	USE THIS SPELLING	ARABIC	USE THIS SPELLING

اجديع	AJDAYI'	أل هيمص	AL-HAYMAS
اركان	ARKAN	أل ياس	ILYAS
ارم يرض	ARMID	امال	AMAL
ازاد	AZAD	امال أل دين	AMAL-AL-DIN
ازغير	IZGHAYIR	امام	IMAM
ازهر	AZHAR	امجد	AMJAD
اسام	ISAM	امجيني	AMJINI
اسامة	USAMAH	امديد	AMDID
استاذ	USTADH	امير	AMIR
اسحق	ISHAQ	اميل	AMIL
اسد	ASAD	امين	AMIN
اسراء	ISRA'	اناهيد	ANAHID
اسطي فان	ISTAYFAN	انتظار	INTIZAR
اسعد	AS'AD	انجس	ANJAS
اسعدي	AS'ADI	انس	AUNS
اسكندر	ISKANDAR	انمار	ANMAR
اسلام	ISLAM	انور	ANWAR
اسماعيل	ISMA'IL	انيس	ANIS
اسمر	ASMAR	اهل يل	AHLIL
اسود	ASWAD	اوراه	AWRAHA
اسودي	ASWADI	اول	AWAL
اشرف	ASHRAF	اياد	AYAD
اشم يل	ISHMAYIL	اياد	IYAD
اعتماد	I'TIMAD	ايسر	AYSAR
اغول	AGHWAL	ايمان	AYMAN
الكرم	AKRAM	ايهاب	IYHAB
الكريم	AKRIM	ايهاب	IHAB
الكوب	HAGOP	ايهاب	IYHAB
الطي ف	AL-LATIF	ايوب	AYYUB
الهام	ILHAM	اسل	ASIL
الهاي ص	AL-HAYIS	آلاء	ALA'
ARABIC	USE THIS SPELLING	ARABIC	USE THIS SPELLING
بابا	BABA	برويل	BRUYIL

باجي	BACHI	بريج	BRIJ
بار	BAR	بريدي	BRADY
باري	BARI	بريسم	BRAYSAM
باسل	BASIL	بريص	BRAYS
باسم	BASIM	باسام	BASSAM
باقي	BAQI	بستان	BUSTAN
باهر	BAHIR	باسيط	BASIT
باهض	BAHID	باسيم	BASIM
باتين	BATIN	بشار	BASHAR
بجاي	BACHAYI	بشري	BUSHRA
بخت يار	BAKHTYAR	بشير	BASHIR
بخيت	BAKHIT	بصير	BASIR
بدر	BADR	بطاح	BATAH
بدر الدين	BADR-AL-DIN	بطرس	BUTRUS
بدران	BADRAN	بطوش	BATUSH
بادري	BADRI	بطي	BTTI
بدن	BADN	بكتاش	BIKTASH
بدوي	BADWI	بكداش	BIKDASH
بدي	BADI	باك	BAKR
بدي	BDDI	باكري	BAKRI
بديع	BADI'	باكير	BAKIR
بديوي	BDAYWI	بالاسم	BALASIM
براء	BRA'	بالال	BILAL
برجس	BIRJIS	بلط	BALAT
برزان	BARZAN	بليبل	BLAYBIL
برغش	BARGHASH	بليغ	BALIGH
بركات	BARAKAT	بندار	BANDAR
برهان	BURHAN	بن يامين	BENJAMIN
برهم	BARHAM	بن يان	BUNYAN
برهو	BIRHU	بهاء	BAHA'
ARABIC	USE THIS SPELLING	ARABIC	USE THIS SPELLING
بهاء الدين	BAHA'-AL-DIN	جاد الله	JADALLAH
بهلول	BAHLUL	جار الله	JARALLAH

بوزغينه	BUZGHAYNAH	جاسب	JASIB
بولس	BULUS	جاسر	JASIR
بوهه	BAWHH	جاسم	JASIM
بياتي	BAYATI	جاسن	JASIN
بيث	BAYTH	جال ي	JALI
تابي	NABI	جامس	JAMIS
تاج	TAJ	جامي	JAMI
تاج الدين	TAJ-AL-DIN	جاهل	JAHIL
تامر	TAMIR	جبار	JABAR
تايه	TAYIH	جباره	JABARAH
تبين	TIBN	جبر	JABUR
تحسين	TAHSIN	جبر الله	JABURALLAH
ترك ان	TURKAN	جبرائيل	JUBRA'IL
تركي	TURKI	جبران	JUBRAN
تقي الدين	TAQI-AL-DIN	جبور	JABUR
تلفاح or طفل فاح	TALFAH	جبير	JUBAYR
تامو	TAMU	جبير	JUBAYIR
توفيق	TAWFIQ	جبيل	JUBAYIL
توما	TUMA	جخدم	JAKHDIM
تيسير	TAYSIR	جخيور	JAKHIUR
تيمور	TAYMUR	جداع	JADA'
تياي	TIYAH	جدة	JADDAH
ثائر	THA'IR	جدعان	JAD'AN
ثابت	THABIT	جدوع	JADU'
ثامر	THAMIR	جدوى	JADWA
ثجيل	THUJAYL	جديع	JDAYI'
ثلج	THALJ	جراح	JARRAH
ثمين	THAMIN	جراد	JARAD
جابر	JABIR	جرجيس	JIRJIS
ARABIC	USE THIS SPELLING	ARABIC	USE THIS SPELLING
جرمط	JARMAT	حازم	HAZIM
جري	JARI	حافظ	HAFIZ
جزاع	JAZA'	حالكم	HAKIM

جساری	JISARI	حاكی	HAKI
جسام	JASSAM	حالوب	HALUB
جعفر	JA'FAR	حامد	HAMID
جعیجر	JU'AYJIR	حامدی	HAMDI
جغیف	JUGHAYIF	حاوی	HAWI
جلاب	JALLAB	حبش	HABASH
جلال	JALAL	حبو	HABU
جلال الدین	JALAL-AL-DIN	حبیب	HABIB
جلبی	CHALABI	حبیتر	HUBAYTIR
جلعوط	JAL'UT	حتوت	HATHUT
جلوب	CHALUB	حجاب	HIJAB
جلیل	JALIL	حجی or حاجی	HAJI
جمال	JAMAL	حداد	HADDAD
جمال الدین	JAMAL-AL-DIN	حدید	HADID
جمعة	JUM'AH	حربی	HARBI
جمیل	JAMIL	حردان	HARDAN
جنان	JANAN	حرز اللہ	HIRZALLAH
جن دیل	JANDIL	حرو	HIRU
جنعان	JAN'AN	حریف	HARIF
جهاد	JIHAD	حساس	HASSAS
جواد	JAWAD	حسام	HUSAM
جواد اللہ	JAWADALLAH	حسام الدین	HUSAM-AL-DIN
جودة	JAWDAH	حسان	HASSAN
جوهان	JAWHAN	حسب اللہ	HASBALLAH
جویر	JUWAYIR	حسن	HASAN
جیاد	JIYAD	حسنہ	HASANAH
حاتم	HATIM	حسون	HASSUN
حاجم	HAJIM	حسیب	HASIB
ARABIC	USE THIS SPELLING	ARABIC	USE THIS SPELLING
حسیجان	HASIJAN	حنش	HANASH
حسین	HUSAYN	حنظل	HANZAL
حطاب	HATTAB	حنید	HANID
حفظ اللہ	HUFZALLAH	حنیش	HUNAYSH

حفيظ	HAFIZ	حواس	HAWWAS
حق	HAQ	حوران	HAWRAN
حقي	HAQQI	حوران	HAWRAN
حكيم	HAKAM	حويجي	HUWAYJI
حكيم	HAKIM	حويريج	HUWAYRIJ
حلبي	HALABI	حي	HAY
حلة	HALAH	حياوي	HAYAWI
حلف	HALF	حيدر	HAYDAR
حلفة	HALFAH	خاجي	KHAJI
حلوص	HULUS	خاطر	KHATIR
حليم	HALIM	خافد	KHAFID
حماد	HAMMAD	خالد	KHALID
حماس	HAMAS	خالص	KHALIS
حمام	HAMAM	خالف	KHALIF
حمد	HAMAD	خالق	KHALIQ
حمد الله	HAMADALLAH	خامس	KHAMIS
حمدان	HAMDAN	خان	KHAN
حمدوش	HAMDUSH	خاوي	KHAWI
حمدون	HAMDUN	ختلان	KHATLAN
حمزة	HAMZAH	خدام	KHADDAM
حمه	HAMMAH	خدور	KHADUR
حمو	HAMU	خديجه	KHADIJAH
حمود	HAMMUD	خرشيدي	KHARSHID
حميد	HAMID	خريبط	KHARBIT
حنا	HANNA	خزعل	KHAZ'AL
حناش	HANNASH	خسرو	KHASRAW
حنتوش	HANTUSH	خشان	KHASHAN
ARABIC	USE THIS SPELLING	ARABIC	USE THIS SPELLING
خصباك	KHISBAK	دانيال	DANIYAL
خضري	KHUDIR	داود	DAWUD
خضري	KHUDIIR	دبوس	DABBUS
خضري	KHUDAYIR	دبي	DUBI
خطاب	KHATTAB	دبيس	DUBAYS

خكمت	HIKMAT	دحام	DAHAM
خلدون	KHALDUN	دحل	DAHAL
خلف	KHALAF	دخيل	DUKHAYL
خلي بص	KHULAYBIS	دخيل الله	DAKHILALLAH
خليف	KHALIF	دربول	DARBUL
خليف	KHULAYF	دردوح	DARDUH
خليفة	KHALIFAH	درع	DUR'
خليل	KHALIL	درويش	DARWISH
خماس	KHAMMAS	دريب	DURAYB
خماط	KHAMAT	دريد	DURAYD
خمو	KHAMMU	دعبس	DA'BIS
خمس	KHAMIS	دعبول	DA'BUL
خمس	KHAMIS	دعدوش	DA'DUSH
خنجر	KHANJAR	دغومي	DAGHUMI
خوام	KHAWWAM	دلف	DALAF
خورشيد	KHURSHID	دل يفي	DULAYFI
خوشابا	KHUSHABA	دنح	DINHA
خوله	KHAWLAH	دندل	DANDAL
خير الله	KHAYIRALLAH	دنيا	DUNYA
خيري	KHAYRI	دهام	DAHAM
خيون	KHAYUN	دهش	DAHASH
داود	DAW'UD	دواي	DUWAYI
داخل	DAKHIL	دوسر	DUSAR
دار	DAR	دوشان	DUSHAN
داغر	DAGHIR	دويك	DAWAYK
دالي	DALI	دياب	DIYAB
ARABIC	USE THIS SPELLING	ARABIC	USE THIS SPELLING
ديار	DIYAR	رجاء	RAJA'
ديوان	DIWAN	رجب	RAJAB
ذاكر	DHAKIR	رحاب	RIHHAB
ذرب	DHARIB	رحال	RIHHAL
ذكر الله	DHIKRALLAH	رحال	RIHAL
ذنون	DHANUN	رحل	RAHAL

ذو النون	DHU-AL-NUN	رحمن	RAHMAN
ذياب	DHIYAB	رحمه الله	RAHMATALLAH
ذيبان	DHAYBAN	رحيل	RAHIL
رؤوف	RA'UF	رحيم	RAHIM
رئيس	RA'IS	رحيمه	RAHIMAH
رائد	RA'ID	ردام	RADAM
راجح	RAJIH	رديف	RADIF
راجي	RAJI	رديف	RADIF
رازق	RAZIQA	رزاق	RAZZAQ
راسم	RASIM	رزوقي	RAZZUQI
راشد	RASHID	رزيق	RAZIQA
راضي	RADI	رسمي	RASMI
راغب	RAGHIB	رسن	RASN
رافد	RAFID	رسول	RASUL
رافع	RAFI'	رشاد	RASHAD
رامز	RAMIZ	رشدي	RUSHDI
رامي	RAMI	رشيد	RASHID
راني	RANI	رضا	RIDA
رانيا	RANIYA	رضوان	RADWAN
راهي	RAHI	رعد	RA'AD
رباح	RABAH	رغيان	RAGHYAN
رباط	RABAT	رفعت	RIF'AT
ربيح	RABI'	رفو	RAFU
ربيحه	RABI'AH	رفيق	RAFIQA
ربيه	RABIYAH	رقيب	RAQIB
ARABIC	USE THIS SPELLING	ARABIC	USE THIS SPELLING
رقيه	RUQYAH	زغري	ZUGHAYR
رقيه	RUQAYYAH	زكري	ZAKRI
رمان	RUMAN	زكريا	ZAKARIYA
رمح	RUMAH	زكور	ZAKUR
رمزي	RAMZI	زكي	ZAKI
رمضان	RAMADAN	زمان	ZAMAN
رميض	RAMID	زميل	ZAMIL

روح ي	RUHI	زهام	ZIHAM
روضان	RAWDAN	زهراء	ZAHRA'
روكان	RAWKAN	زهوان	ZAHWAN
روي ش	RWAYISH	زهير	ZUHAYR
رياض	RIYAD	زوبع	ZAWBA'
ريحان	RAYHAN	زوراء	ZAWRAE
ريشان	RAYSHAN	زويد	ZUWAYID
ريكان	RIKAN	زويد	ZUWAYID
زاهد	ZAHID	زوين	ZWAYN
زاهر	ZAHIR	زيا	ZIYA
زاي ر	ZAYIR	زيا ب	ZIYAB
زبار	ZIBAR	زيا د	ZIYAD
زبال	ZABBAL	زي د	ZAYD
زباله	ZIBALAH	زيدان	ZAYDAN
زبن	ZABIN	زين	ZAYN
زبون	ZABUN	زين الدين	ZAYN-AL-DIN
زبيب	ZABIB	زين العابدين	ZAYN-AL-'ABIDIN
زبير	ZUBAYR	زينل	ZAYNAL
زرزور	ZARZUR	زينو	ZAYNU
زعنون	ZA'NUN	ساجت	SAJIT
زعيبيل	ZU'AYBIL	ساجده	SAJIDAH
زغدان	ZAGHDAN	ساحوذ	SAHUDH
زغيتون	ZUGHAYTUN	ساري	SARI
زغير	ZAGHIR	ساطع	SATI'
ARABIC	USE THIS SPELLING	ARABIC	USE THIS SPELLING
سافر	SAFIR	سكيران	SAKRAN
ساق ي	SAQI	سلام	SALAM
سال م	SALIM	سلطان	SULTAN
سامر	SAMIR	سلمان	SALMAN
سام ي	SAMI	سلو	SALW
ساي ر	SAYIR	سلوان	SALWAN
سباه ي	SBAHI	سلوم	SALLUM
سبتي	SABTI	سليم	SALIM

سبع	SAB'	سليم الله	SALIMALLAH
سبهان	SABHAN	سليمان	SULAYMAN
ستار	SATTAR	سماري	SIMARI
سخيظ	SUKHAYT	سمير	SAMIR
سداد	SADDAD	سميل	SAMIL
سراج	SIRAJ	سمين	SAMIN
سراج الدين	SIRAJ-AL-DIN	سنا	SANA'
سرحان	SARHAN	سنادي	SANADI
سرمد	SARMAD	سنان	SINAN
سرور	SURUR	سنجار	SINJAR
سظام	SATTAM	سند	SIND
سعاد	SU'AD	سندس	SUNDUS
سعد	SA'AD	سهل	SUHIL
سعد الدين	SA'AD-AL-DIN	سهيل	SUHAYL
سعد الله	SA'ADALLAH	سوادي	SAWADI
سعد بن ابي	SA'AD-BIN-ABI	سوارى	SUWARI
سعدون	SA'DUN	سوسن	SAWSAN
سعدى	SA'DI	سويد	SAWID
سعود	S'UD	سويدان	SUWAYIDAN
سعيد	SA'ID	سياب	SIYAB
سفان	SAFAN	سيب	SAYIB
سفيان	SUFYAN	سيد	SAYID
سفيح	SAFIH	سيف	SAYF
ARABIC	USE THIS SPELLING	ARABIC	USE THIS SPELLING
سيف الاسلام	SAYF-AL-ISLAM	شعلان	SHA'LAN
سيف الدين	SAYF-AL-DIN	شعيا	SHA'YA
سيف الله	SAYFALLAH	شعيب	SHU'AYB
سيفان	SAYFAN	شعير	SHU'AYR
شاحوت	SHAHUT	شفيق	SHAFIQ
شارف	SHARIF	شكر	SHUKR
شاطي	SHATI	شكر الله	SHUKRALLAH
شكر	SHAKIR	شكري	SHUKRI
شامخ	SHAMIKH	شكله	SHIKLAH

شامل	SHAMIL	شكور	SHAKUR
شامي	SHAMI	شلاح	SHALAH
شاني	SHANI	شلال	SHALLAL
شاهر	SHAHIR	شلتاغ	SHALTAGH
شوايش	SHAWISH	شلش	SHALSH
شايغ	SHAYI'	شلغم	SHALGHAM
شبابي	SHABIB	شلهوب	SHALHUB
شجاع	SHUJA'	شمخي	SHAMKHI
شحاته	SHIHATAH	شمران	SHUMRAN
شحاده	SHIHADAH	شمس الله	SHAMSALLAH
شحاده	SHIHADHAH	شنافي	SHANAFI
شذر	SHADHIR	شنان	SHINAN
شذي	SHADHA	شناوه	SHANAWAH
شرار	SHARAR	شنيتار	SHUNAYTAR
شريقي	SHARQI	شنين	SHUNAYIN
شرموط	SHARMUT	شهاب	SHIHAB
شروين	SHARWAYIN	شهاب	SHIHAB
شريجي	SHURAYJI	شهاد	SHIHAD
شريده	SHARIDAH	شهيد	SHAHID
شريف	SHARIF	شوان	SHAWAN
شطب	SHATAB	شوشان	SHUSHAN
شعبان	SHA'BAN	شوقي	SHAWQI
ARABIC	USE THIS SPELLING	ARABIC	USE THIS SPELLING
شوكات	SHAWKAT	صروف	SARUF
شويش	SHAWISH	صفاء	SAFA'
شيت	SHIT	صفاصاف	SIFSAF
شيحان	SHAYHAN	ص فوق	SAFUQ
شيخ	SHAYIKH	صقر	SAQR
شيني	SHINI	صكبان	SAKBAN
صائب	SA'IB	صكر	SAKAR
صابر	SABIR	صلاح	SALAH
صاحب	SAHIB	صلاح الدين	SALAH-AL-DIN
صادق	SADIQ	صلال	SILLAL

صافي	SAFI	صل اوي	SILLAWI
صالح	SALIH	صلي وه	SLIWAH
صايل	SAYIL	صم اغ	SAMAGH
صباح	SABAH	صم د	SAMAD
صبار	SABBAR	صم يم	SAMIM
صبح	SUBH	صم يم	SAMIM
صبحي	SUBHI	صوب الله	SAWBALLAH
صبر	SABUR	صوي جان	SUWAYJAN
صبري	SABRI	صي هود	SAYHUD
صبور	SBUR	ض احي	DAHI
صبيح	SABIH	ض اري	DARI
صحن	SAHIN	ض امر	DAHIR
صخي	SAKHI	ض رار	DRAR
صخييل	SUKHAYL	ض رغام	DARGHAM
صدام	SADDAM	ض م د	DAMAD
صدر	SADIR	ض د	DHAD
صدر الدين	SADIR-AL-DIN	ض ياء	DIYA'
صدق	SUDQ	ض ياء الدين	DIYA'-AL-DIN
صدقي	SUDQI	ض ياء الله	DIYA'ALLAH
صدوق	SIDUQ	ض يدان	DAYDAN
صديق	SADIQ	ض يف	DAYF
ARABIC	USE THIS SPELLING	ARABIC	USE THIS SPELLING
ضيف الله	DAYFALLAH	عارف	'ARIF
طائف	TA'IF	عاشور	'ASHUR
طابوق	TABUQ	عاصم	'ASIM
طارش	TARISH	عاصي	'ASI
طارق	TARIQ	عاطف	'ATIF
طالب	TALIB	عاطي	'ATI
طاهر	TAHIR	عامر	'AMIR
طاييس	TAYIS	عاييد	'AYID
طخاخ	TAKHAKH	عايش	'AYISH
طراد	TARAD	عباد	'ABBAD
طرفه	TARFAH	عباده	'IBADAH

طرموز	TURMUZ	عباس	'ABBAS
طري طش	TURAYTISH	عجل	'ABJAL
طعان	TA'AN	عبد	'ABD
طعمه	TU'MAH	عبد ال احد	'ABD-AL-AHAD
طلاب	TALAB	عبد ال اخر	'ABD-AL-AKHR
طلال	TALAL	عبد ال اعلى	'ABD-AL-A'LA
طلب	TALIB	عبد ال اله	'ABD-AL-ILAH
طلحة	TALHAH	عبد ال امام	'ABD-AL-IMAM
طلعت	TAL'AT	عبد ال امير	'ABD-AL-AMIR
طليان	TULYAN	عبد ال اول	'ABD-AL-AWAL
طه	TAHA	عبد ال بار	'ABD-AL-BARR
طوفان	TAWAFAN	عبد ال باري	'ABD-AL-BARI
طوقان	TAWQAN	عبد ال باس ط	'ABD-AL-BASIT
طوي	TAWI	عبد ال باقي	'ABD-AL-BAQI
طيب	TAYIB	عبد ال بصير	'ABD-AL-BASIR
ظافر	ZAFIR	عبد ال بطين	'ABD-AL-BATIN
ظاهر	ZAHIR	عبد ال تواب	'ABD-AL-TAWAB
عائد	'A'ID	عبد ال جبار	'ABD-AL-JABBAR
عاد	'AD	عبد ال جليل	'ABD-AL-JALIL
عادل	'ADIL	عبد ال جواد	'ABD-AL-JAWAD
ARABIC	USE THIS SPELLING	ARABIC	USE THIS SPELLING
عبد ال حاسب	'ABD-AL-HASIB	عبد ال شكور	'ABD-AL-SHAKUR
عبد ال حافظ	'ABD-AL-HAFIZ	عبد ال شهيد	'ABD-AL-SHAHID
عبد ال حسن	'ABD-AL-HASAN	عبد ال صاحب	'ABD-AL-SAHIB
عبد ال حسيب	'ABD-AL-HASIB	عبد ال صمد	'ABD-AL-SAMAD
عبد ال حسين	'ABD-AL-HUSAYN	عبد ال طفل فاح	'ABD-AL-TALFAH
عبد ال حفيظ	'ABD-AL-HAFIZ	عبد ال ظاهر	'ABD-AL-ZAHIR
عبد ال حقي	'ABD-AL-HAQ	عبد ال عباس	'ABD-AL-'ABBAS
عبد ال حكام	'ABD-AL-HAKAM	عبد ال عدل	'ABD-AL-'ADIL
عبد ال حكيم	'ABD-AL-HAKIM	عبد ال عزيز	'ABD-AL-'AZIZ
عبد ال حلیم	'ABD-AL-HALIM	عبد ال عظيم	'ABD-AL-'AZIM
عبد ال حميد	'ABD-AL-HAMID	عبد ال عفو	'ABD-AL-'AFU
عبد ال حي	'ABD-AL-HAY	عبد ال علي	'ABD-AL-'ALI

عبد الخالق	'ABD-AL-KHALIQ	عبد العليم	'ABD-AL-'ALIM
عبد الرؤوف	'ABD-AL-RA'UF	عبد الغفار	'ABD-AL-GHAFFAR
عبد الرب	'ABD-AL-RABB	عبد الغفور	'ABD-AL-GHAFUR
عبد الرحمن	'ABD-AL-RAHMAN	عبد الغني	'ABD-AL-GHANI
عبد الرحيم	'ABD-AL-RAHIM	عبد الفتاح	'ABD-AL-FATTAH
عبد الرزاق	'ABD-AL-RAZZAQ	عبد القادر	'ABD-AL-QADIR
عبد الرسول	'ABD-AL-RASUL	عبد القباديب	'ABD-AL-QABADIB
عبد الرشيد	'ABD-AL-RASHID	عبد القدوس	'ABD-AL-QUDDUS
عبد الرضا	'ABD-AL-RIDA	عبد القدير	'ABD-AL-QADIR
عبد الرقيب	'ABD-AL-RAQIB	عبد القهار	'ABD-AL-QAHHAR
عبد الزكي	'ABD-AL-ZAKI	عبد القوي	'ABD-AL-QAWI
عبد الزهره	'ABD-AL-ZAHRAH	عبد القويوم	'ABD-AL-QAYYUM
عبد الساده	'ABD-AL-SADAH	عبد الكافي	'ABD-AL-KAFI
عبد السامي	'ABD-AL-SAMI	عبد الكبير	'ABD-AL-KABIR
عبد الساتار	'ABD-AL-SATTAR	عبد الكريم	'ABD-AL-KARIM
عبد السراج	'ABD-AL-SIRAJ	عبد اللطيف	'ABD-AL-LATIF
عبد السلام	'ABD-AL-SALAM	عبد الله	'ABDALLAH
عبد السيد	'ABD-AL-SAYID	عبد المؤمن	'ABD-AL-MU'MIN
عبد الشاهد	'ABD-AL-SHAHID	عبد المؤيد	'ABD-AL-MU'ID
ARABIC	USE THIS SPELLING	ARABIC	USE THIS SPELLING
عبد المالک	'ABD-AL-MALIK	عبد الوهاب	'ABD-AL-WAHHAB
عبد المبيد	'ABD-AL-MUBID	عبد علي	'ABD 'ALI
عبد المتعالي	'ABD-AL-MUTA'ALI	عبدان	'ABDAN
عبد المتين	'ABD-AL-MATIN	عبدي	'ABDI
عبد المجيب	'ABD-AL-MUJIB	عبطان	'ABTAN
عبد المجيد	'ABD-AL-MAJID	عبود	'ABBUD
عبد المحسن	'ABD-AL-MUHSIN	عبودي	'ABUDI
عبد المحمد	'ABD-AL-MUHAMMAD	عبيد	'UBAYD
عبد المحي	'ABD-AL-MUHI	عبيس	'UBAYIS
عبد المخابر	'ABD-AL-MUKHABIR	عتوي	'UTWI
عبد المساور	'ABD-AL-MUSAWIR	عثمان	'UTHMAN
عبد المطلب	'ABD-AL-MUTALLIB	عجد	'AJD
عبد المقيت	'ABD-AL-MUQIT	عجرش	'AJRASH

عبد المكتبر	'ABD-AL-MUKTABIR	عجلان	'AJLAN
عبد المناف	'ABD-AL-MANNAF	عجمي	'AJAMI
عبد المنعم	'ABD-AL-MUN'IM	عجيب	'AJIB
عبد المهدي	'ABD-AL-MAHDI	عجيل	'AJIL
عبد الموتى	'ABD-AL-MUTI	عجيل	'UJAYL
عبد الموجود	'ABD-AL-MAWJUD	عدان	'ADAN
عبد الناصر	'ABD-AL-NASIR	عداي	'ADAY
عبد النبي	'ABD-AL-NABI	عدنان	'ADNAN
عبد النوح	'ABD-AL-NUH	عدي	'UDAY
عبد النور	'ABD-AL-NUR	عذاب	'ADHAB
عبد الهادي	'ABD-AL-HADI	عرسان	'IRSAN
عبد الهوى	'ABD-AL-HUWA	عرميظ	'RAMIT
عبد الواحد	'ABD-AL-WAHID	عريبي	'RAYBI
عبد الواسع	'ABD-AL-WASI'	عريف	'ARIF
عبد الوحد	'ABD-AL-WUHUD	عزالدين	'IZZ-AL-DIN
عبد الوحي	'ABD-AL-WAHID	عزال	'AZZAL
عبد الودود	'ABD-AL-WADUD	عزام	'AZZAM
عبد الوكيل	'ABD-AL-WAKIL	عزبه	'IZBAH
ARABIC	USE THIS SPELLING	ARABIC	USE THIS SPELLING
عزت	'IZZAT	عمار	'AMMAR
عزيز	'AZIZ	عماش	'AMMASH
عساف	'ASSAF	عمر	'UMAR
عسك	'ASKAR	عمران	'UMRAN
عصام	'ISAM	عميد	'AMID
عطا	'ATA	عناد	'INAD
عطاء الله	'ATA'ALLAH	عن ايه الله	'INAYATALLAH
عطيّة	'ATIYA	عنبر	'ANBAR
عظير	'ATIR	عنتر	'ANTAR
عظيم	'AZIM	عنون	'ANUN
عفان	'AFFAN	عنيزان	'ANIZAN
عفت	'IFAT	عواد	'AWWAD
عفتان	'AFTAN	عوس	'AWS
عفر	'AFAR	عوف	'AWF

عفو	'AFU	عون ي	'AWNI
عقيل	'AQIL	عون ي الدين	'AWNI-AL-DIN
عكرب	'AKRAB	عوي د	UWAYID
عكل	'AKL	ع يد	'ID
عكله	'AKLAH	ع يدان	'IDAN
علا	'ALA	ع يسى	'ISSA
علاء	'ALA'	ع يشة	'AYSHAH
علاء الدين	'ALA'-AL-DIN	غاجي	GHACHI
علاوي	'ALAWI	غادر	GHADIR
علو	'ALU	غازي	GHAZI
علوان	'ALWAN	غافل	GHAFIL
علوك	'ALUK	غالب	GHALIB
علي	'ALI	غالي	GHALI
علي ج	'ALIJ	غانم	GHANIM
علي م	'ALIM	غراف	GHARRAF
عليوي	'ULAYWI	غريب	GHARIB
عماد	'IMAD	غريب	GHURAYB
ARABIC	USE THIS SPELLING	ARABIC	USE THIS SPELLING
غزال	GHAZAL	فتحي	FATHI
غزاله	GHAZALAH	فتحية	FATHIYAH
غسان	GHASSAN	فتره	FATRAH
غضيب	GHADIB	فتي حان	FTAYHAN
غفار	GHAFFAR	فتي خان	FTAYKHAN
غفور	GHAFUR	فجر	FAJIR
غفوري	GHAFURI	فحل	FAHAL
غلام	GHULAM	فخر الدين	FAKHAR-AL-DIN
غنن	GHANNAN	فخري	FAKHRI
غن اوي	GHANAWI	فراس	FIRAS
غني	GHANI	فرج	FARAJ
غنم	GHANIM	فرج الله	FARAJALLAH
غياث الدين	GHAYATH-AL-DIN	فرح	FARAH
غياض	GHIYAD	فرحان	FARHAN
غيث	GHAYTH	فرزو	FRZU

غيلان	GHAYLAN	فرمان	FIRMAN
فؤاد	FU'AD	فريحان	FRAYHAN
فائق	FA'IQ	فريد	FARID
فاتح	FATIH	فصل	FASIL
فاتن	FATIN	فقير	FAQIR
فاخر	FAKHIR	فكري	FIKRI
فارس	FARIS	فلاح	FALLAH
فارسي	FARSI	فليح	FLAYYIH
فارغ	FARIGH	فليفل	FULAYFIL
فاروق	FARUQ	فنجان	FINJAN
فاضل	FADIL	فندي	FINDI
فاطمه	FATIMAH	فنر	FANNR
فاهم	FAHIM	فنوص	FANUS
فتاح	FATTAH	فهد	FAHAD
فتان	FATAN	فاهمي	FAHMI
فتح الله	FATHALLAH	فاهمي	FAHAYMI
ARABIC	USE THIS SPELLING	ARABIC	USE THIS SPELLING
فواز	FAWWAZ	كابين	KABIN
فوزي	FAWZI	كردى	KURDI
فياض	FAYYAD	كرم الله	KARMALLAH
فيروز	FAYRUZ	كرموص	KARMUS
فيزي	FAYZI	كريدي	KARIDI
فيصل	FAYSAL	كريم	KARIM
قائد	QA'ID	كزنوص	KAZNUS
قادر	QADIR	كشاش	KASHASH
قادر كاك	QADIR-KAK	كشيمر	KUSHAYMIR
قاسم	QASIM	كعبوش	KA'BUSH
قاهر	QAHIR	كفكير	KAFKIR
قتيبة	QUTAYBAH	كمال	KAMAL
قحطان	QAHTAN	كمر	KUMAR
قدو	QADU	كमित	KAMIT
قدوري	QADURI	كنعان	KAN'AN
قدوس	QUDUS	كنو	KANU

ق س ام	QASSAM	كنوش	KANUSH
ق س ي	QASI	كوركيس	KURKIS
ق ص ي	QUSAY	كوين	KWIN
ق وي	QAWI	كيسر	KAYSAR
ق يس	QAYIS	كيطان	KAYTAN
ق ي وم	QAYUM	كيف	KAYIF
ك ا ب د	KABID	كيل	KAYIL
ك ا ط ع	KATI'	لادن	LADIN
ك ا ظ م	KAZIM	لازم	LAZIM
ك ا ك ا	KAKA	لاجي	LAJI
ك ا ك ل	KAKIL	لطيف	LATIF
ك ا م ل	KAMIL	لعبيبي	LU'AYBI
ك ا ي م	KAYIM	لفته	LAFTAH
ك ب ا ش ي	KIBASHI	لواي	LUAYI
ك ب ي ر	KABIR	ليته	LAYTA
ARABIC	USE THIS SPELLING	ARABIC	USE THIS SPELLING
ل ي ث	LAYITH	محسن	MUHSIN
م و ا د ب	MU'ADAB	محيي	MUHSI
م و ا م ن	MU'MIN	محفوظ	MAHFUZ
م و ا ي د	MU'AYID	محقق	MUHAQIQ
م ا ج د	MAJID	محل	MAHAL
م ا ز ن	MAZIN	محمد	MUHAMMAD
م ا ش ي	MASHI	محمد اشكح	MUHAMMAD-ASHKAH
م ا ل ال ه	MALLALLAH	محمد الظاهر	MUHAMMAD-AL-ZAHIR
م ا ل ك	MALIK	محمد النور	MUHAMMAD-AL-NUR
م ا م ن د	MAMIND	محمد علي	MUHAMMAD-'ALI
م ا ن ع	MANI'	محمود	MAHMUD
م ا ه د	MAHID	محيي	MUHYI
م ا ه ر	MAHIR	محيي الدين	MUHYI-AL-DIN
م ا ي ح	MAYIH	محيي بس	MUHAYBIS
م ا م و ن	MA'MUN	محيي سن	MUHAYSIN
م ب ا ر ك	MUBARAK	محيي ل	MUHAYIL
م ب د ي	MUBDI	محيي من	MUHAYMIN

متعب	MUT'AB	محيي مريد	MUHAYMID
متكبر	MUTAKABIR	مختار	MUKHTAR
متوكه	MATUKAH	مخلف	MUKHLIF
متين	MATIN	مخير	MUKHIR
مثنى	MUTHANNA	مخيف	MUKHAYIF
مجاهد	MUJAHID	مخيلف	MUKHAYLIF
مجبىل	MUJBAL	مدال له	MADALLAH
مجرى	MUJZIN	مدب	MUDB
مجلي	MAJLI	مدل	MUDALAL
مجمان	MAJMAN	مراد	MURAD
مجهول	MAJHUL	مراد	MURAD
مجبىب	MUJIB	مران	MARAN
مجيد	MAJID	مرتضى	MURTADA
محرث	MIHRATH	مرجان	MARJAN
ARABIC	USE THIS SPELLING	ARABIC	USE THIS SPELLING
مرعى	MAR'I	مطش	MUTASHAR
مروان	MARWAN	مطلق	MUTLAQ
مريىر	MARIR	مطلق	MUTLAK
مريىط	MURIT	مظلوم	MAZLUM
مزاحم	MUZAHIM	مظهر	MUZHIR
مزابان	MUZBAN	معارج	MU'ARAJ
مزعىل	MUZ'IL	معزز	MU'TAZ
مزهىر	MUZHAR	معجل	MU'AJJIL
مزيل	MUZIL	معروف	MA'RUF
مساور	MUSAWIR	معشوق	MA'SHUQ
مستشار	MUSTASHAR	معمر	MU'AMMAR
مسررىت	MUSRAYIT	معن	MA'N
مستطفى	MUSTAFA	معيد	MU'ID
مسعد	MUS'AD	مغامس	MUGHAMIS
مسلاك	MUSLAK	مغنى	MUGHNI
مسلط	MUSLAT	مغرى	MUGHAYR
مسلم	MUSLIM	مفلى	MAFLA
مشارف	MUSHARIF	مقتدر	MUQTADIR

مشرف	MUSHRIF	مقتدى	MUQTADA
مشعان	MUSH'AN	مقداد	MUQDAD
مشعل	MISH'AL	مقدم	MUQADDIM
مشكور	MASHKUR	مقصد	MUQSD
مشلوخ	MASHLUKH	مقو	MAQU
مشير	MUSHIR	مقيت	MUQIT
مشي مش	MUSHAYMISH	مكاد	MUKAD
مصطاف	MISTAF	ملا	MULLA
مصعب	MUS'AB	مमित	MUMIT
مصلح	MUSLIH	منتصر	MUNTASIR
مصويول	MASYUL	منتظر	MUNTAZAR
مضل	MUDHAL	منتقم	MUNTAQIM
مطر	MUTAR	منتهى	MUNTAHA
ARABIC	USE THIS SPELLING	ARABIC	USE THIS SPELLING
منخي	MANKHI	نايف	NA'IF
منديل	MANDIL	نايف	NAYIF
منسف	MANSAF	نبات	NABAT
منسي	MANSI	نبايل	NABIL
منصور	MANSUR	نبيه	NABIH
منير	MUNIR	نجاح	NAJAH
مهدي	MAHDI	نجف	NAJAF
مهل هل	MUHALHAL	نجم	NAJM
منا	MUHANNA	نجم الدين	NAJM-AL-DIN
مهند	MUHANNAD	نجيب	NAJIB
مهندس	MUHANDIS	نزار	NAZAR
مهوس	MIHWIS	نشات	NASH'AT
مهيان	MIHYAN	نشوان	NASHWAN
مهديدي	MUHAYDI	نصر الله	NASRALLAH
موحان	MUHAN	نصير	NASIR
موسى	MUSA	نصيف	NASIF
موفق	MUWAFaq	نظير	NAZIR
مولى	MAWLA	نظيم	NAZIM
ميثم	MAYTHAM	نعمان	NU'MAN

م ب ذن	MU'ADHIN	ن عم ة ال له	NI'MATALLAH
م ب ل ف	MU'ALIF	ن ع يم	NA'IM
ن ا ج ي	NAJI	ن م ر	NIMR
ن ا د ر	NADIR	ن م ي ر	NAMIR
ن ا ص ح	NASIH	ن ه ا د	NIHAD
ن ا ص ر	NASSIR	ن و ا ر	NAWAR
ن ا ط ق	NATIQ	ن و ا ف	NAWAF
ن ا ظ م	NAZIM	ن و ح	NUH
ن ا ف ع	NAFI'	ن و ر	NUR
ن ا م س	NAMIS	ن و ر ال د ي ن	NUR-AL-DIN
ن ا م و ل	NAMUL	ن و ر ال س م ا ء	NUR-AL-SAMA'
ن ا ه ص	NAHID	ن و ر ي	NURI
ARABIC	USE THIS SPELLING	ARABIC	USE THIS SPELLING
ن و ف ا ن	NAWFAN	و ئ ا م	WI'AM
ن و ف ا ل	NAWFAL	و ا ئ ل	WA'IL
ن و م ا ن	NAWMAN	و ا ج د	WAJID
ن و ي د س	NUIYDAS	و ا ح د	WAHID
ن ي ر ا ن	NIRAN	و ا ح ي	WAHI
ه ا د ي	HADI	و ا د ي	WADI
ه ا ر و ن	HARUN	و ا ر ث	WARITH
ه ا ش م	HASHIM	و ا س ع	WASI'
ه ا ن ي	HANI	و ا ل ي	WALI
ه ج ي ر س	HUJAYRIS	و ا ل ي ا ن	WALIYAN
ه د ا ش	HADASH	و ا ه ب	WAHIB
ه د ه د	HUDHUD	و ح ي د	WAHID
ه د و ا ن	HADWAN	و ح ي د	WAHID
ه د ي	HUDA	و د و د	WADUD
ه د ي و س	HUDAWS	و س ا م	WISAM
ه د ي ر	HADIR	و س م ي	WASMI
ه ذ ا ل	HADHAL	و ش ا م	WISHAM
ه ز ا ع	HIZA'	و ع د	WA'AD
ه ش ا م	HISHAM	و ع د ال له	WA'ADALLAH
ه ل ا ل	HILAL	و ك ا ع	WAKA'

هلامه	HALAMAH	وكف	WAKAF
هلبيت	HALBAYIT	وكيل	WAKIL
هلكوت	HALKUT	ولي الله	WALIALLAH
هندي	HINDI	ولي	WALID
هوبي	HUBI	وناس	WANAS
هويدي	HUWAYDI	وهاج	WIHAJ
هويرف	HUWAYRIF	وهب	WAHB
هويش	HUWAYSH	وهيب	WAHIB
هياس	HIYAS	يار	YAR
هيثم	HAYTHIM	يار الله	YARALLAH
هيلان	HAYLAN	ياس	YAS
ARABIC	USE THIS SPELLING	ARABIC	TITLE
ياس رومي	YAS-RUMI	آنسة	ANISAH
ياسر	YASIR	شيوخ	SHAYIKH
ياسين	YASIN	حاجي	HAJJI
ياور	YAWIR	سيد	SAYID
ياحي	YAHYA	إمام	IMAM
ياعقوب	YA'QUB	ملى	MULLA
ياعكوب	YA'KUB	ختيب	KHATIB
يوسف	YUSIF	اية الله	AYATALLAH
يونس	YUNIS	مهندس	MUHANDIS
		مجاهد	MUJAHID
		مجاهدين	MUJAHIDIN
		امير	AMIR

TRIBAL NAMES:

ARABIC	USE THIS SPELLING	ARABIC	USE THIS SPELLING
العبايجي	AL-'ABA'CHI	العبد الله	AL-'ABIDALLAH
العبادي	AL-'ABADI	العبدين	AL-'ABIDIN
العباسي	AL-'ABBASI	الابيلة	AL-ABILAH
العبو عباس	ALBU-'ABBAS	العبكي	AL-'ABKI
بان عباس	BANI-'ABBAS	ابو دارج	ABU-DARAJ
العباوي	AL-'IBAWI	ابو حمزه	ABU-HAMZA
العبودة	AL-'ABUDAH	ابو الهني	ABU-AL-HANI

العبودي	AL-'ABUDI	ابو حيدر	ABU-HAYDAR
العبد	AL-'ABID	ابو خالد	ABU-KHALID
العبدي	AL-'ABDALI	ابو خمره	ABU-KHUMRAH
العبد الله	AL-'ABDALLAH	ابو الليرة	ABU-AL-LIRAH
عبد الله المظفر	'ABDALLAH-AL-MUZAFAR	ابونا	ABUNA
عبد الله الشاوي	'ABDALLAH-AL-SHAWI	ابو ريشة	ABU-RISHAH
العبو عبد الله	ALBU-'ABDALLAH	ابو رغيف	ABU-RAGHAYF
عبد القادر	'ABD-AL-QADIR	العبوس	AL-'ABUS
عبد السيد	'ABD-AL-SAYID	ابو سمره	ABU-SAMRAH
العبد الواحد	AL-'ABD-AL-WAHID	ابو صوط	ABU-SAWT
ARABIC	USE THIS SPELLING	ARABIC	USE THIS SPELLING
ابو طابخ	ABU-TABIKH	العلواني	AL-'ALWANI
ابو طبره	ABU-TABRAH	البو امير	ALBU-AMIR
ابو عبيد	ABU-'UBAYD	الاميري	AL-AMIRI
الابيض	AL-ABYAD	العامري	AL-'AMIRI
العداري	AL-'ADARI	العمار	AL-'AMMAR
العدل	AL-'ADIL	العماري	AL-'AMMARI
العفاس	AL-'AFFAS	العنباكي	AL-'ANBAKI
الاحبابي	AL-AHBABI	العنباري	AL-'ANBARI
الاحمد	AL-AHMAD	العنابي	AL-'ANNABI
احمد الزبيدي	AHMAD-AL-ZUBAYDI	الانصاري	AL-ANSARI
الاحمدي	AL-AHMADI	الاناني	AL-'ANI
الاحرار	AL-AHRAR	الانزي	AL-'ANZI
الاحواز	AL-AHWAZ	الانقيدي	AL-'AQIDI
الاجلي	AL-'AJALI	الابو عرب	ALBU-'ARAB
الاجباني	AL-'AJABAWI	عربو	'ARABU
الانكلي	AL-'UKILI	العربو	AL-'ARABU
الانكابي	AL-'AKAB	الانرجي	AL-A'RAJI
الانكراه	AL-'UKRAH	الانرضاي	AL-'URDAWI
الانلاوي	AL-'ALAWI	الانكيمي	AL-ARKAMI
الانها	ILHA	الانراوتي	AL-ARNA'UTI
الانلي	AL-'ALI	الانراجي	AL-'ARRAJI
الابو علي	ALBU-'ALI	الانرونه	AL-'ARUNAH

علي ال خطيب	'ALI-AL-KHATIB	ارزوقي	ARZUQI
علي الشريفي	'ALI-AL-SHARIF	الاسدي	AL-ASADI
العلن ج اوي	AL-'ALNAJAWI	ال عسلي	AL-'ASALI
العلك اوي	AL-'ALKAWI	اشوري	ASHURI
العل اف	AL-'ALAF	ال عاصي	AL-'ASI
الالوسي	AL-ALUSI	ال عسكري	AL-'ASKARI
العلوان	AL-'ALWAN	ال عصمي	AL-'ASMI
ابو علوان	ABU-'ALWAN	ال عس اوي	AL-'ISAWI
ال ابو علوان	ALBU-'ALWAN	عتكو	'ATKU
ARABIC	USE THIS SPELLING	ARABIC	USE THIS SPELLING
ال اطرق جي	AL-ATRAQCHI	ب الكور	BAKUR
ال عتابي	AL-'ITTABI	ال بن دار	AL-BANDAR
ال عطار	AL-'ATTAR	ال بن داوي	AL-BANDAWI
ال عوادي	AL-'AWADI	ال بني ان	AL-BINYAN
ال اوسي	AL-AWSI	ال بزازنة	AL-BAZAZANAH
اوزن يان	AWZNIYAN	ال برد اوي	AL-BARDAWI
ال ايوبي	AL-AYUBI	بردي	BARDI
ال عيود	AL-'UIYUD	ال بره اوي	AL-BARHAWI
ال ازدي	AL-AZDI	بريدي	BARIDI
ال اعظمي	AL-A'ZAMI	باريس	PARIS
ال ازي رج اوي	AL-AZAYRCHAWI	برخو	BARKHW
ال عزبلي	AL-'AZBALI	ال برزن جي	AL-BARZANCHI
ال ازرق ي	AL-AZRAQI	ابن باش	IBN-BASH
ال عزام	AL-'AZZAM	ال بصري	AL-BASRI
ال بعاج	AL-BA'AJ	ال بطبوطي	AL-BATBUTI
ال ببضان ي	AL-BABDANI	ال بطحة	AL-BATHAH
ال بدر	AL-BADIR	بطيخ	BATTIKH
ال ابو بدران	ALBU-BADRAN	ال باوي	AL-BAWI
ال بدران ي	AL-BADRANI	ال بياتي	AL-BAYATI
ال بدري	AL-BADRI	ال بيضان ي	AL-BAYDANI
ال ابو بدري	ALBU-BADRI	ال بي در	AL-BAYDAR
بدور	BIDUR	ال بي جوان ي	AL-BIJWANI
ال بغداد ي	AL-BAGHDADI	بيك	BAYK

البحادلي	AL-BAHADLI	ببيرق دار	BAYRQADAR
البهادلي	AL-BAHADLI	البي ت غضي ب	AL-BAYT-GHADIB
البحاري	AL-BAHARI	البي اع	AL-BAYYA'
البحاري	AL-BAJARI	البزركان	AL-BAZARKAN
باجلان	BAJILAN	البازي	AL-BAZI
الباجلان	AL-BAJILAN	البازوني	AL-BAZUNI
الباختري	AL-BAKHTARI	بي بي	BIBI
الباكري	AL-BAKRI	بهرزي	BIHRUZI
ARABIC	USE THIS SPELLING	ARABIC	USE THIS SPELLING
البي رمان ي	ALBAYR-MANI	البو دراج	ALBU-DARRAJ
باك	BAK	الدرارجي	AL-DARRAJI
براوري	BIRAWARI	الدروي ش	AL-DARWISH
البرف	AL-BIRF	الدوش تكي	AL-DAWSHTAKI
بروادي	BIRWADI	الدوسكي	AL-DAWSKI
البس اغه	AL-BISAGHAH	داود الراوي	DAWUD-AL-RAWI
البتواني	AL-BUTANI	الداودي	AL-DAWUDI
بوداغ	BUDAGH	الدي ووجي	AL-DAYUJI
البدري	AL-BADIR	الدايني	AL-DAYANI
البدري	AL-BADIRI	الذره	AL-DAZHI
البخاتره	ALBIKHATRAH	الذهبي	AL-DHAHABI
البري فك ا	ALBRIFKA	الذيرج اوي	AL-DHIRCHAWI
البري فك ان ي	ALBIRFKANI	الذي اب	AL-DHIYAB
البري هي	AL-BRIHI	البو ذي اب	ALBU-DHIYAB
البري	AL-BASIR	الذهبي بي	AL-DHUHAYBI
الجلبي	AL-CHALABI	الدبس	AL-DIBS
جقم اف جي	CHAQMAQCHI	الدفاعي	AL-DIFA'I
الدباغ	AL-DABAGH	الدلفي	AL-DULFI
الدباني	AL-DUBANI	الديني	AL-DINI
الدباش	AL-DABASH	الديوان	AL-DIWAN
الدباسي	AL-DABASI	دي ات	DIYAT
الدبوس	AL-DABUS	الدبيسي	AL-DUBAYSI
الداجر	AL-DAGHIR	الدح يدح اوي	AL-DAHIDHAWI
الداغستاني	AL-DAGHISTANI	الدهي ماوي	AL-DUHIMAWI

الضاحي	AL-DAHI	الدهلكي	AL-DUHULKI
الدوشكي	AL-DAHUSHKI	الدجيلي	AL-DUJAYLI
الدكة	AL-DAKAH	دليمي	DULAYMI
دخي	DAKHI	الدليمي	AL-DULAYMI
الداخلي	AL-DAKHILI	الدرأويش	AL-DARAWISH
الدقوقي	AL-DAQUQI	الدريس	AL-DURIS
الدارماني	ALDARMANI	الدريساوي	AL-DURISAWI
ARABIC	USE THIS SPELLING	ARABIC	USE THIS SPELLING
الدوربي	AL-DURBI	الفكيكي	AL-FAKIKI
دوري	DURI	الفراتي	AL-FURATI
الدوري	AL-DURI	الفراباوي	AL-FRIBAWI
الدرعي	AL-DUR'I	الفرجي	AL-FARIJI
الفداغي	AL-FADDAGHI	الغبان	AL-GHABAN
الفضل	AL-FADIL	الغفاري	AL-GHAFARI
الفضلي	AL-FADLI	الغافلي	AL-GHAFILI
فهد	FAHD	غنائم	GHANA'IM
البو فهد	ALBU-FAHD	الغانم	AL-GHANIM
الفهداوي	AL-FAHDAWI	الغانمي	AL-GHANIMI
الفصيل	AL-FAYSAL	الغراوي	AL-GHARAWI
الفلحي	AL-FALAH	الغرباني	AL-GHARBANI
فلوجة	FALLUJAH	الغرباوي	AL-GHARBAWI
الفنهاراوي	AL-FANHARAWI	الغريباوي	AL-GHRIBAWI
الفرج	AL-FARAJ	الغريري	AL-GHARIRI
فرج	FARAJ	الغراف	AL-GHARRAF
الفرحان	AL-FARHAN	الغاتمي	AL-GHATIMI
الفارس	AL-FARIS	الغزالي	AL-GHAZALI
الفرجي	AL-FARRAJI	الغازي	AL-GHAZI
الفرطوسي	AL-FARTUSI	الغزي	AL-GHAZZI
الفاشي	AL-FASHI	الغضبان	AL-GHADBAN
الفطن	AL-FATAN	غليط	GHALIT
الفتلاوي	AL-FATLAWI	الغانمياوي	AL-GHANIMAW
الفتراوي	AL-FATRAWI	الغرابي	AL-GHURABI
الفوادي	AL-FAWADI	الغريري	AL-GHRAYIR

الفياض	AL-FAYYAD	الغريري	AL-GHARIRI
الفداري	AL-FADARI	حبشي	HABASHI
الفحام	AL-FIHAM	الحداد	AL-HADDAD
الفراجي	AL-FIRAJI	الحدادي	AL-HADDADI
الفرعون	AL-FIR'AWN	الحديدي	AL-HADIDI
الفضيلى	AL-FADILI	الحديث	AL-HADITH
ARABIC	USE THIS SPELLING	ARABIC	USE THIS SPELLING
الحديثي	AL-HADITHI	الحسن	AL-HASAN
الهادي	AL-HADI	الحسن اوي	AL-HASANAWI
حدوشي	HADUSHI	الهاشمي	AL-HASHIMI
الحدراوي	AL-HADRAWI	الחסون	AL-HASUN
ال حافظي	AL-HAFIZI	حسناني	HASANI
ال حلفي	AL-HALLAFI	ال حصاني	AL-HUSANI
ال حلقى	AL-HALAQI	ال حاتم	AL-HATIM
ال حلو	AL-HALU	ال حاتمي	AL-HATIMI
ال ابو حلو	ALBU-HALU	ال حاوندي	AL-HAWINDI
ال ابو حمد	ALBU-HAMD	ال ابو حيه	ALBU-HAYAH
حمادي	HAMADI	ال حياي	AL-HAYALI
ال حم اوي	AL-HAMAWI	ال حيدري	AL-HAYDARI
ال ابو حمدان	ALBU-HAMDAN	ال هاييس	AL-HAYIS
ال حمداني	AL-HAMDANI	ال حيان	AL-HAYYANI
ال حمدوني	AL-HAMDUNI	ال هيتي	AL-HITI
ال حم يداوي	AL-HAMIDAWI	ال حجاري	AL-HAJARI
حميدي	HAMIDI	ال حجامي	AL-HUJAMI
حماده	HAMMADAH	ال هلالي	AL-HILLALI
حمادي	HAMMADI	ال حلاق	AL-HALLAQ
ال حم امي	AL-HAMMAMI	ال جراح	AL-JARAH
حمودي	HAMMUDI	ال حردان	AL-HARDAN
حموشي	HAMMUSHI	ال هركي	AL-HIRKI
ال حم راني	AL-HAMRANI	ال هسكاني	AL-HISKANI
ال حمزه	AL-HAMZA	ال هواش	AL-HAWASH
ال حرب اوي	AL-HARBAWI	ال هواز	AL-HAWAZ
ال حربى	AL-HARBI	ال حزبه	AL-HIZBAH

ال حربيه	AL-HARBIAH	ال حجيشي	AL-HAJAYSHI
حريري	HARIRI	حميري	HUMAYRI
ال حارث	AL-HARITH	ال حميري	AL-HUMAYRI
ال حارثي	AL-HARITHI	هريمس	HURAYMIS
ال حروبة	AL-HARUBAH	ال حريق اوي	AL-HAHIQAWI
ARABIC	USE THIS SPELLING	ARABIC	USE THIS SPELLING
حريش	HRAYISH	ال جعفري	AL-JA'FARI
ال حريش اوي	AL-HRAYISHAWI	ال جاف	AL-JAFF
ال حريشي	AL-HRAYISHI	ال ابو جحش	ALBU-JAHISH
ال حريث اوي	AL-HRAYTHAWI	ال جائف	AL-JA'IFI
ال حصيرجي	AL-HASIRJI	ال جلبي	AL-CHALABI
ال حسينات	AL-HASINAT	جال	JALI
ال حسيني	AL-HUSAYNI	ال جلبي اوي	AL-JALIBAWI
ال حصن اوي	AL-HASNAWI	جلوله	JALULAH
ال هوذي	AL-HUWAYDI	ال جمعي	AL-JUM'I
ال هزي اوي	AL-HAZIMAWI	ال جمالي	AL-JAMALI
ال ابراهيمي	AL-IBRAHIMI	ال جميلي	AL-JUMAYLI
ال عيادي	AL-'IDANI	ال جمشي	AL-JAMSHI
ال عيافي اوي	AL-'IFAWI	ال جنابي	AL-JANABI
ال الهامي	AL-ILHAMI	ال جنبدي	AL-JANBUDI
ال امامه	AL-IMARAH	ال جندي	AL-JANDIL
ال ابو عناد	ALBU-'INAD	جربوع	JARBU'
ال ايراني	AL-IRANI	ال جرجري	AL-JARJARI
عيسى	'ISA	ال جرواني	AL-JARWANI
ال ابو عيسى	ALBU-'ISA	ال ابو جاسم	ALBU-JASIM
ال عيسى اوي	AL-'ISAWI	ال جوعاني	AL-JAW'ANI
ال اسحاق	AL-ISHAQI	ال جواربي	AL-JAWARI
ال عيث اوي	AL-'ITHAWI	ال جواربي	AL-JAWARBI
ال عيادي	AL-'IYADI	جاويش	JAWISH
ال عياش	AL-'IYASH	ال جياشي	AL-JAYASHI
ال عياشي	AL-'IYASHI	ال جيبجي	AL-JIBCHI
عز ال خوري	'IZZ-AL-KHURI	ال جيلابي	AL-JAYLABI
ال عز اوي	AL-'IZZAWI	ال جيزاني	AL-JIZANI

ال عزي	AL-'IZZI	ال جرب ه	AL-JARBAH
ال عزو	AL-'IZZU	جرار	JIRRAR
ال جابري	AL-JABIRI	ال جرو	AL-JIRU
ال جدي	AL-JADI	ج ي ا ر و ك	JIYARUK
ARABIC	USE THIS SPELLING	ARABIC	USE THIS SPELLING
ال جزائري	AL-JIZA'IRI	ال ك ش ي ت	AL-KASHIT
ال ج ع ي ف ر ي	AL-JU'AYFARI	ال ك ص و ص ي	AL-KASUSI
ج ب و ر ي	JUBURI	ال ك ي ال ي	AL-KAYALI
ال ج ب و ر ي	AL-JUBURI	ال ك ي ج ل ي	AL-KAYCHALI
ال ج ف ي ف ي	AL-JUFAYFI	ال ك ي ج ا و ي	AL-KIJAWI
ال ج ف ي ل ي	AL-JUFAYLI	ال ك ي م	AL-KAYM
ال ج غ ي ف ي	AL-JUGHAYFI	ال ك ي م ي	AL-KAYMI
ال ج ح ي ش	AL-JUHAYSH	ال ك ا ظ م ي	AL-KAZIMI
ال ج ح ي ش ي	AL-JUHAYSHI	خ ف ا ج ي	KHAFAJI
ال ج و ل ا غ	AL-JULAGH	ال خ ف ا ج	AL-KHAFAJ
ال ج ل ي ح ا و ي	AL-CHILIHAWI	ال خ ف ا ج ي	AL-KHAFAJI
ج م ع ة	JUM'AH	ال خ ل ف	AL-KHALAF
ال ج م ي ل ي	AL-JUMAYLI	ال خ ال د ي	AL-KHALIDI
ال ج و ر ا ن ي	AL-JURANI	ال ب و خ ل ي ف ة	ALBU-KHALIFAH
ال ج ر ي س ي	AL-JIRISI	ال خ ل ي ف ا و ي	AL-KHALIFAWI
ال ج ر ي ت ا	AL-JARITA	ال خ ل ي ل	AL-KHALIL
ال ج ر ج ي س	AL-JARJIS	ال خ ل ي ل ي	AL-KHALILI
ال ج و ي ن ي	AL-JUWAYNI	خ ل و ف ي	KHALUFI
ال ك ع ب ي	AL-KA'BI	ال خ م ي س	AL-KHAMIS
ال ك ض ا و ي	AL-KADAWI	ال خ ر ب ي ط	AL-KHARBIT
ك ه ي ه	KAHIYAH	خ ر و ف ه	KHARUFAH
ال ك ح ل ا و ي	AL-KAHLAWI	ال خ ش ل ي	AL-KHASHLI
ال ك ال ال ي	AL-KALALI	ال خ ش م ا ن ي	AL-KHASHMANI
ال ك ل ا و	AL-KALAW	ال خ ط ا و ي	AL-KHATAWI
ال ك ل د ا ن ي	AL-KILDANI	ال خ ط ا ب	AL-KHATTAB
ال ك ن ع ا ن ي	AL-KAN'ANI	ال خ و ا ج ه	AL-KHAWAJAH
ال ك ر و ي	AL-KARAWI	ال خ ي ا ط	AL-KHAYAT
ال ك ر ب و ل ي	AL-KARBULI	ال خ ي ك ا ن ي	AL-KHAYKANI

الكرغلي	AL-KARGHALI	الخيواني	AL-KHAYLANI
الكرخي	AL-KARKHI	خيوكه	KHAYUKAH
الكرطاني	AL-KARTANI	الخيرالده	AL-KHAYRALLAH
ARABIC	USE THIS SPELLING	ARABIC	USE THIS SPELLING
الخيرو	AL-KHAYRU	كردي	KURDI
الخزاعي	AL-KHAZA'I	الكردي	AL-KURDI
الخزعلي	AL-KHAZ'ALI	الكرجي	AL-KURJI
الخزرجي	AL-KHAZRAJI	الكويتي	AL-KUWAYTI
الخضر	AL-KHUDR	اللاجلاج	AL-LAJLAJ
خراطي	KHILATI	اللامي	AL-LAMI
الخرس اوي	AL-KHARSAWI	اللايذ	AL-LAYIDH
الخشالي	AL-KHASHALI	اللاهيب	AL-LAHIB
الخشاني	AL-KHASHAN	اللعبيبي	AL-LU'AYBI
الخز	AL-KHAZ	لهبيبي	LUHAYBI
الخضيري	AL-KHUDAYIR	اللهبيبي	AL-LUHAYBI
الخضر	AL-KHUDR	اللويسي	AL-LUWAYSI
خليوي	KHULAYWI	اللويزي	AL-LUWAYZI
خوشن او	KHUSHNAW	المدايني	AL-MADA'INI
الخطيب	AL-KHUTAYIB	المدني	AL-MADANI
خوير	KHUWAYIR	المدخوري	AL-MADHKHURI
خويصان الخويص	KHUWAYSAN-AL-KHUWYAS	المفراجي	AL-MAFRAJI
خويتلي	KHUWAYTLI	البو محل	ALBU-MAHAL
الكبراني	AL-KIBRANI	مهل هل	MUHALHAL
الكدمي	AL-KADMI	المهداوي	AL-MAHDAWI
الكيلاني	AL-KAYLANI	البو محمود	ALBU-MAHMUD
الكلابي	AL-KILLABI	المجدي	AL-MAJID
كنه	KANAH	الماجدي	AL-MAJIDI
الكناني	AL-KINANI	المجول	AL-MAJWAL
كركجة	KARKAJAH	المكدمي	AL-MAKDAMI
الكولبي	AL-KULABI	المالك	AL-MALIK
كبيسي	KUBAYSI	المالكي	AL-MALIKI
الكبيسي	AL-KUBAYSI	المكدهي	AL-MAKDAHI
الكمعي	AL-KUMAY'I	المكصوصي	AL-MAKSUSI

الكرى طوي	AL-KURYATAWI	الملاح	AL-MALLAH
الكرى طي	AL-KURAYTI	المعموري	AL-MA'MURI
ARABIC	USE THIS SPELLING	ARABIC	USE THIS SPELLING
المنجور	AL-MANJUR	المنهاوي	AL-MINHAWI
المنصور	AL-MANSUR	المسماري	AL-MISMARI
المرعي	AL-MAR'I	المياصي	AL-MAYYASI
مارديروس	MARDAYRUS	المزوري	AL-MIZURI
المرجاني	AL-MARJANI	المعجل	AL-MU'AJIL
المرکز	AL-MARKAZ	المعيني	AL-MU'INI
المرمطي	AL-MARMUZI	البو مدلل	ALBU-MUDALAL
المرسومي	AL-MARSUMI	المفرجي	AL-MAFARAJI
المرزوك	AL-MARZUK	المحمد	AL-MUHAMMAD
المشهداني	AL-MASHHADANI	البو محمد	ALBU-MUHAMMAD
المشهدى	AL-MASHHADI	محمد علي	MUHAMMAD-'ALI
المشرفاوي	AL-MUSHARIFAWI	محمد الامام	MUHAMMAD-AL-IMAM
المشرفاي	AL-MUSHARIFAY	محمد النداوي	MUHAMMAD-AL-NIDAWI
المسيح	AL-MASIH	محمد الربيعي	MUHAMMAD-AL-RUBAY'I
المسعود	AL-MAS'UD	محمد الظاهر	MUHAMMAD-AL-ZAHIR
المسعودي	AL-MAS'UDI	المحمداني	AL-MUHAMMADANI
المطوفي	AL-MA'TUFI	المحمداوي	AL-MUHAMMADAWI
المعتوق	AL-MA'TUQ	المحمدي	AL-MUHAMMADI
المتيوتي	AL-MATIUTI	مهاوش	MUHAWISH
الموالي	AL-MAWALI	المحيسن	AL-MUHAYSIN
المولاني	AL-MAWLANI	المحب اوي	AL-MUhibAWI
المولاوي	AL-MAWLAWI	المحسن اوي	AL-MUHSINAWI
المولى	AL-MAWLA	المحياوي	AL-MUHAYYAWI
المولي	AL-MAWLI	المعيني	AL-MU'INI
الموصللي	AL-MAWSILI	المجمعي	AL-MAJAMA'I
المياح	AL-MAYYAH	المكرمي	AL-MUKARAMI
المياحي	AL-MAYYAH	المختار	AL-MUKHTAR
المزروعى	AL-MAZRU'I	الملا	AL-MULLA
المدفعي	AL-MADFA'I	الملاي	AL-MAL'I
مكامي	MIKAMIS	المؤمن	AL-MU'MIN

الم عمري	AL-MA'MURI	المن يعي	AL-MUNI'I
ARABIC	USE THIS SPELLING	ARABIC	USE THIS SPELLING
المن شداوي	AL-MUNSHIDAWI	الناصري	AL-NASIRI
المرى وحة	AL-MARIUHAH	الناصر الله	AL-NASRALLAH
المرديني	AL-MARDINI	الناصر اوي	AL-NASRAWI
المرشدي	AL-MURSHIDI	النافلي	AL-NAWFALI
الموسى	AL-MUSA	الندا	AL-NIDA
المسلط	AL-MUSALLIT	النجار	AL-NIJAR
الموسوي	AL-MUSAWI	النمر	AL-NIMR
المشاد	AL-MUSHAHID	البنمر	ALBU-NIMR
المشادي	AL-MUSHAHIDI	المنري	AL-NIMRI
مشتات	MUSHATAT	البن نيسان	ALBU-NISAN
المشايخي	AL-MASHAYIKHI	البن يساني	AL-NISANI
المصل اوي	AL-MASLAWI	الناوح	AL-NUH
المصطفى	AL-MUSTAFA	النعيمي	AL-NI'AYMI
البن مصطفى الخليل	ALBU-MUSTAFA-AL-KHALIL	الناخيل اوي	AL-NAKHILAWI
المطيري	AL-MUTAYIRI	الناخيلي	AL-NAKHILI
المظفر	AL-MUZAFAR	النعمان	AL-NU'MANI
الموزني	AL-MUZINI	النوري	AL-NURI
النداوي	AL-NADDAWI	نصيري	NASIRI
النافعي	AL-NAFI'I	النوادي	AL-NUWADI
النافطجي	AL-NAFTACHI	النويسي	AL-NUWAYSIRI
الناهي	AL-NAHI	اودبشو	ODIBSHU
النعيمي	AL-NA'IMI	الباجه جي	AL-PACHACHI
نجدت	NAJDAT	القاضي	AL-QADI
الناجدي	AL-NAJDI	قذوري	QADURI
الناجي	AL-NAJI	القهداوي	AL-QAHDAWI
الناجم اوي	AL-NAJIMAWI	قجر	QICHIR
الناجار	AL-NAJJAR	القرة غولي	AL-QARAH-GHULI
النامرود	AL-NAMRUD	القرقولي	AL-QARGHULI
الناقبي	AL-NAQIB	القرقولي	AL-QARQULI
الناقشبندي	AL-NAQISHABANDI	القراعي	AL-QARA'I

الابوناصر	ALBU-NASIR	القرطاني	AL-QARTANI
ARABIC	USE THIS SPELLING	ARABIC	USE THIS SPELLING
القاسم	AL-QASIM	الرماحي	AL-RAMAHI
قاسم الحيد	QASIM-AL-HAYID	الروني	AL-RUNI
القاس خوشابا	AL-QAS KHUSHABA	الربيعي	AL-RUBAY'I
القاسر وفائي	AL-QAS RWAFA'IL	الرديني	AL-RUDAYNI
القصاب	AL-QASAB	البورغيف	ALBU-RAGHIF
قصاب باشي	QASAB-BASHI	الرهوي	AL-RAHYAWI
القصار	AL-QASAR	السايعي	AL-SA'I
القطراني	AL-QATRANI	الساباوي	AL-SAB'AWI
القعود	AL-QU'UD	الصابري	AL-SABIRI
القيسي	AL-QAYSI	الابوسعد	ALBU-SA'D
القزاز	AL-QIZAZ	السادة	AL-SADAH
القفيلي	AL-QAFILI	الساداتي	AL-SADATI
القريشي	AL-QURAYSHI	الساداوي	AL-SADAWI
القريشي	AL-QURAYSHYAS	السادعي	AL-SA'DI
الربيعة	AL-RABI'AH	السادون	SA'DUN
الربيعاوي	AL-RUBAY'AWI	السادون	AL-SA'DUN
الراضي	AL-RADI	السادعي	AL-SA'IDI
الرحال	AL-RAHAL	السادعي	AL-SA'IDI
الرحيمي	AL-RAHIMI	الصفار	AL-SAFFAR
الرحماني	AL-RAHMANI	الصافي	AL-SAFI
الراعي	AL-RA'I	الصحاف	AL-SAHHAF
الرمضان	AL-RAMADANI	الصائغ	AL-SA'IGH
الرشاد	AL-RASHAD	السايجي	AL-SAJI
الرشيد	AL-RASHID	الساكني	AL-SAKINI
الرشيد	AL-RASHID	الساكران الله	AL-SAKRANALLAH
الرشيدي	AL-RASHIDI	السلامي	AL-SALAMI
الرشيدي	AL-RASHIDI	الابوسليم	ALBU-SALIMAH
الراوي	AL-RAWI	الصالح	AL-SALIH
الرفاعي	AL-RIFA'I	الابوصالح	ALBU-SALIH
الريكابي	AL-RIKABI	الصالح الاحمدي	SALIH-AL-AHMADI
الرماح	AL-RAMAH	الصالح	AL-SALIHI

ARABIC	USE THIS SPELLING	ARABIC	USE THIS SPELLING
ال ب و س الم	ALBU-SALIM	ال ش ا ع ر ي	AL-SHA'IRI
ال س ل م ا ن ي	AL-SALMANI	ال ش ا ك ر	AL-SHAKIR
ال س ل م ا ت ي	AL-SALMATI	ال ش ك ر ج ي	AL-SHAKRAJI
ال س ل م ا و ي	AL-SALMAWI	ال ش ا م	AL-SHAM
ال س م ر ج ي	AL-SAMARJI	ال ب و ش ا م ا ن	ALBU-SHAMAN
ال س ا م ر ا ئ ي	AL-SAMARRA'I	ال ش م ط ي	AL-SHAMATI
ال س م ا و ي	AL-SAMAWI	ال ش م ي	AL-SHAMI
ال س ا م ر	AL-SAMIR	ال ش م ا ع	AL-SHAMMA'
س ن ا د ي	SANADI	ش م ر ي	SHAMMARI
ال ص ق ا ل	AL-SAQAL	ال ش م ر ي	AL-SHAMMARI
ال س ر ا ي	AL-SARAYI	ش م ع و ن	SHAM'UN
ال ب و س ر ا ي	ALBU-SARAYI	ال ش ر ا ب ي	AL-SHARABI
ال س ر ا ج ي	AL-SARRAJI	ال ش ر ا ي	AL-SHARAYI
ال س و ا د ي	AL-SAWADI	ش ر ي د ه	SHARIDAH
ال س و ا ل م	AL-SAWALIM	ال ش ر ي ف	AL-SHARIF
ال ص ي ا د	AL-SAYYAD	ال ش ر ي ف ي	AL-SHARIFI
ال ص ي ا د ي	AL-SAYYADI	ال ش ر ف ا ن ي	AL-SHARFANI
ال ش ب ا ك	AL-SHABAK	ال ش ر ق ا و ي	AL-SHARQAWI
ال ش ع ب ا ل ي	AL-SHA'BALI	ال ش ر ق ي	AL-SHARQI
ال ش ع ب ا ن ي	AL-SHA'BANI	ال ش ا ط ي	AL-SHATI
ال ش ب ا ن ة	AL-SHABANAH	ش ا و ر د ي	SHAWARDI
ال ش ع ب ي	AL-SHA'BI	ال ش ا و ي	AL-SHAWI
ال ش ب ل ا و ي	AL-SHABLAWI	ال ش ي ب ا ن ي	AL-SHAYBANI
ش ب و	SHABBU	ال ش ا ي ع	AL-SHAYI'
ال ش د و د	AL-SHADUD	ال ش ي خ	AL-SHAYKH
ال ش ا ه ي ن	AL-SHAHIN	ال ب و ش ي خ ع ب د ال ل ه	ALBU-SHAYKH-'ABDALLAH
ش ه ل ا	SHAHLA	ال ش ي خ ع ي س ي	AL-SHAYIKH 'ISA
ال ش ه ر ب ا ل ي	AL-SHAHRBALI	ال ش ي خ ج ا د ر	AL-SHAYIKH JADIR
ال ش ه ر ب ا ن ي	AL-SHAHRBANI	ال ش ي خ ز ي ن ي	AL-SHAYIKH ZAYNI
ش ه و ا ن	SHAHWAN	ال ش م خ ا ن ي	AL-SHAKHANI
ال ش ه و ا ن ي	AL-SHAHWANI	ال ش ي خ ل ي	AL-SHAYKHLI

ARABIC	USE THIS SPELLING	ARABIC	USE THIS SPELLING
الشعار	AL-SHI'AR	الْبوسعيير	ALBU-SU'AYIR
الشبلبي	AL-SHUBLI	الصببي اوي	AL-SUBYAWI
الشبر	AL-SHIBR	السوداني	AL-SUDANI
شحاد	SHAHADH	الصوفي	AL-SUFI
شقاقي	SHAQAFI	السهيل	AL-SUHAYIL
الشيرواني	AL-SHIRWANI	الصحيوي	AL-SAHYAWI
شوانبي	SHAWANI	السكنيني	AL-SUKAYNI
الشوق	AL-SHUQ	السليفاني	AL-SULAYFANI
الشعبي	AL-SHU'AYB	السليماني	AL-SULAYMANI
الشبيبي	AL-SHUBAYBI	صلبي	SULBI
الشجيري	AL-SHUYAYRI	سلطان الجب	SULTAN-AL-JIB
الشكري	AL-SHUKRI	السُلطان	AL-SULTAN
الشعلة	AL-SHU'LAH	السُلطاني	AL-SULTANI
الشمايلي اوي	AL-SHUMAYLAWI	الْبوسُلطاني	ALBU-SULTANI
الشريفي	AL-SHARIF	الصميداي	AL-SUMIDA'I
الشريفات	AL-SHURAYFAT	الصريوي	AL-SURYAWI
الشواربي	AL-SHWARIJ	السروجي	AL-SURUJI
الشويخي	AL-SHUWAYKHI	السويدي	AL-SWI'AYDI
الشويلي	AL-SHUWAYLI	السويس اوي	AL-SWISAWI
شويرات	SHUWAYRAT	الصواف	AL-SAWAF
شويش	SHUWAYSH	الْبوسويلم	ALBU-SUWAYLIM
سدخان	SIDKHAN	الطبقجلي	AL-TABAQCHLI
الصفاوي	AL-SIFAWI	طببائي	TABTABAN'I
السلاوي	AL-SILAWI	الْبوطه	ALBU-TAHA
السندي	AL-SINDI	الطائي	AL-TA'I
السنجري	AL-SINJRI	الطلباني	AL-TALABANI
السردار	AL-SIRDAR	التلمجي	AL-TULAMCHI
السرحاني	AL-SARHANI	بن تميم	BIN-TAMIM
السرائج	AL-SARAJ	التميمي	AL-TAMIMI
السرائجي	AL-SARAJI	طاقه	TAQAH
الْبوسعيدي	ALBU-SA'ID	الطرفي	AL-TARAFI
ARABIC	USE THIS SPELLING	ARABIC	USE THIS SPELLING

الطربولي	AL-TARBULI	الاصبيح اوي	AL-USBAYHAWI
الطربوش	AL-TARBUSH	ال عصفور	AL-'USFUR
الطربوشي	AL-TARBUSHI	ال اشريكي	AL-USHRAYKI
الطيار	AL-TAYAR	ال عثمان	AL-'UTHMAN
الطياف	AL-TAYF	ال وائل	AL-WA'ILI
الطيب	AL-TAYIB	الورجي	AL-WARJI
الثلعلبي	AL-THA'LABI	الوشاش	AL-WASHASH
الثامر	AL-THAMIR	الواسطي	AL-WASITI
الثامري	AL-THAMIRI	الويدي	AL-WAYDI
الثرواني	AL-THARWANI	ويس	WAYS
الثغام	AL-THAGHAM	الويس	AL-WAYS
التيكريتي	AL-TIKRITI	الوزان	AL-WAZAN
التينجي	AL-TITINCHI	الوطيفي	AL-WATIFI
الطوبجي	AL-TUBCHI	اليساري	AL-YASARI
الطفيلي	AL-TUFAYLI	اليسار	AL-YASIR
التيكمة جي	AL-TUKMA-CHI	اليساري	AL-YASIRI
التريب	AL-TURAYB	اليوناني	AL-YUNANI
التويجري	AL-TUWAYCHRI	اليونيس	AL-YUNIS
التويني	AL-TUWAYNI	اليسوف	AL-YUSIF
العبدي	AL-'UBAYID	اليزبكي	AL-YUZBAKI
البو عبدي	ALBU-'UBAYID	الزابي	AL-ZABI
عبيدي	'UBAYDI	زبونة	ZIBUNAH
العبدي	AL-'UBAYDI	الزغبني	AL-ZUGHBI
الابيص	AL-ABYAS	الزهاوي	AL-ZAHAWI
ال عجيلي	AL-'UJAYLI	الظاهري	AL-ZAHIRI
ال عكيدي	AL-'AKIDI	زهاو	ZAHRAW
العلوي	AL-'ALWI	الزكو	AL-ZAKU
العمري	AL-'UMARI	الزامل	AL-ZAMIL
ال عقيب	AL-'UQABI	الزامل	AL-ZAMILI
ال عقيلي	AL-'UQAYLI	الزمو	AL-ZMU
ال اورفلي	AL-URFALLI	زنكنه	ZANGANA
ARABIC	USE THIS SPELLING	ARABIC	USE THIS SPELLING
الزركاني	AL-ZARKANI	الزباري	AL-ZIBARI

الزركوشي	AL-ZARKUSHI	الزندي	AL-ZINDI
الزرقى	AL-ZARQI	الزيرجاوى	AL-ZIRJAWI
الزوبع	AL-ZAWBA'I	الزىادى	AL-ZIYADI
الزاوى	AL-ZAWI	الزعبى	AL-ZU'BI
زى اوردة	ZAYAWARDAH	الزورى	AL-ZURI
زى داوى	ZAYDAWI	الزبىدى	AL-ZUBAYDI
الزى داوى	AL-ZAYDAWI	الظفبرى	AL-ZAFAYRI
الزى دى	AL-ZAYDI	زهىرى	ZUHAYRI
الزايىد	AL-ZAYID	الزهىرى	AL-ZUHAYRI
الزايىر	AL-ZAYIR	الزرىجاوى	AL-ZURAYJAWI